

Product datasheet

Anti-CIAPIN1 antibody ab198194

[2 Images](#)

Overview

Product name	Anti-CIAPIN1 antibody
Description	Rabbit polyclonal to CIAPIN1
Host species	Rabbit
Tested applications	Suitable for: WB, IHC-P
Species reactivity	Reacts with: Human
Immunogen	Recombinant fragment within Human CIAPIN1 (N terminal). The exact sequence is proprietary. Fusion protein corresponding to residues near the N terminal of human CIAPIN1. The identity of the protein fusion partner is GST. Database link: Q6FI81
Positive control	Raji cell lysate, human liver cancer tissue
General notes	<p>The Life Science industry has been in the grips of a reproducibility crisis for a number of years. Abcam is leading the way in addressing this with our range of recombinant monoclonal antibodies and knockout edited cell lines for gold-standard validation. Please check that this product meets your needs before purchasing.</p> <p>If you have any questions, special requirements or concerns, please send us an inquiry and/or contact our Support team ahead of purchase. Recommended alternatives for this product can be found below, along with publications, customer reviews and Q&As</p>

Properties

Form	Liquid
Storage instructions	Shipped at 4°C. Store at +4°C short term (1-2 weeks). Upon delivery aliquot. Store at -20°C long term. Avoid freeze / thaw cycle.
Storage buffer	pH: 7.4 Preservative: 0.05% Sodium azide Constituents: 49% PBS, 50% Glycerol (glycerin, glycerine)
Purity	Immunogen affinity purified
Clonality	Polyclonal
Isotype	IgG

Applications

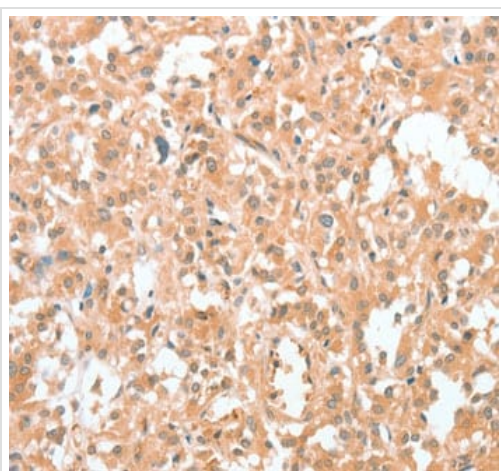
The Abpromise guarantee Our **Abpromise guarantee** covers the use of ab198194 in the following tested applications. The application notes include recommended starting dilutions; optimal dilutions/concentrations should be determined by the end user.

Application	Abreviews	Notes
WB		1/500 - 1/2000. Predicted molecular weight: 34 kDa.
IHC-P		1/50 - 1/200.

Target

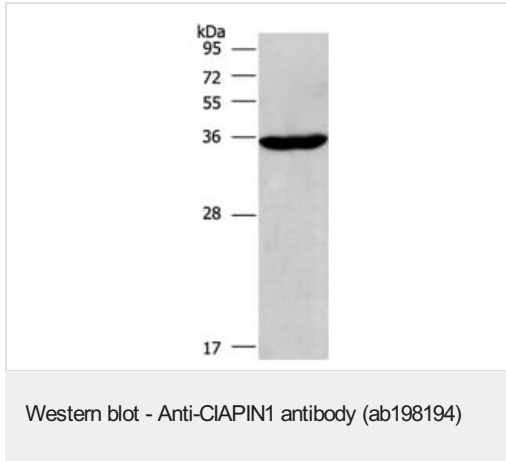
Function	May be required for the maturation of extramitochondrial Fe/S proteins (By similarity). Has anti-apoptotic effects in the cell. Involved in negative control of cell death upon cytokine withdrawal. Promotes development of hematopoietic cells.
Tissue specificity	Ubiquitously expressed. Highly expressed in heart, liver and pancreas.
Sequence similarities	Belongs to the anamorsin family.
Cellular localization	Cytoplasm. Nucleus.

Images



Immunohistochemical analysis of formalin fixed paraffin embedded human liver cancer tissue labeling CIAPIN1 with ab198194 at 1/60

Immunohistochemistry (Formalin/PFA-fixed paraffin-embedded sections) - Anti-CIAPIN1 antibody (ab198194)



Anti-CIAPIN1 antibody (ab198194) at 1/597 dilution + Raji cell lysate at 40 μ g

Predicted band size: 34 kDa

Exposure time: 2 minutes

6% SDS PAGE

Please note: All products are "FOR RESEARCH USE ONLY. NOT FOR USE IN DIAGNOSTIC PROCEDURES"

Our Abpromise to you: Quality guaranteed and expert technical support

- Replacement or refund for products not performing as stated on the datasheet
- Valid for 12 months from date of delivery
- Response to your inquiry within 24 hours
- We provide support in Chinese, English, French, German, Japanese and Spanish
- Extensive multi-media technical resources to help you
- We investigate all quality concerns to ensure our products perform to the highest standards

If the product does not perform as described on this datasheet, we will offer a refund or replacement. For full details of the Abpromise, please visit <https://www.abcam.com/abpromise> or contact our technical team.

Terms and conditions

- Guarantee only valid for products bought direct from Abcam or one of our authorized distributors