

Anti-CIB1/KIP antibody ab191516

1 Image

Overview

Product name	Anti-CIB1/KIP antibody
Description	Rabbit polyclonal to CIB1/KIP
Host species	Rabbit
Tested applications	Suitable for: WB
Species reactivity	Reacts with: Rat, Human
Immunogen	Synthetic peptide within Human CIB1/KIP. The exact sequence is proprietary. Database link: Q99828
Positive control	HEK293T, H9C2, Rat brain lysates
General notes	<p>The Life Science industry has been in the grips of a reproducibility crisis for a number of years. Abcam is leading the way in addressing this with our range of recombinant monoclonal antibodies and knockout edited cell lines for gold-standard validation. Please check that this product meets your needs before purchasing.</p> <p>If you have any questions, special requirements or concerns, please send us an inquiry and/or contact our Support team ahead of purchase. Recommended alternatives for this product can be found below, along with publications, customer reviews and Q&As</p>

Properties

Form	Liquid
Storage instructions	Shipped at 4°C. Store at +4°C short term (1-2 weeks). Upon delivery aliquot. Store at -20°C long term. Avoid freeze / thaw cycle.
Storage buffer	Preservative: 0.1% Sodium azide Constituents: 49% PBS, 50% Glycerol
Purity	Immunogen affinity purified
Purification notes	purity is > 95% (by SDS-PAGE)
Clonality	Polyclonal
Isotype	IgG

Applications

The Abpromise guarantee

Our **Abpromise guarantee** covers the use of ab191516 in the following tested applications.

The application notes include recommended starting dilutions; optimal dilutions/concentrations should be determined by the end user.

Application	Abreviews	Notes
WB		1/500. Predicted molecular weight: 22 kDa.

Target

Function

May convert the inactive conformation of integrin alpha-IIb/beta3 to an active form through binding to the integrin cytoplasmic domain. Induces cell migration and spreading mediated through integrin (possibly via focal adhesion complexes). Functions as a negative regulator of stress activated MAP kinase (MAPK) signaling pathways. May play a role in regulation of apoptosis. Interacts with and up-regulates PTK2 activity. Down regulates inositol 1,4,5-trisphosphate receptor-dependent calcium signaling.

Tissue specificity

Ubiquitous.

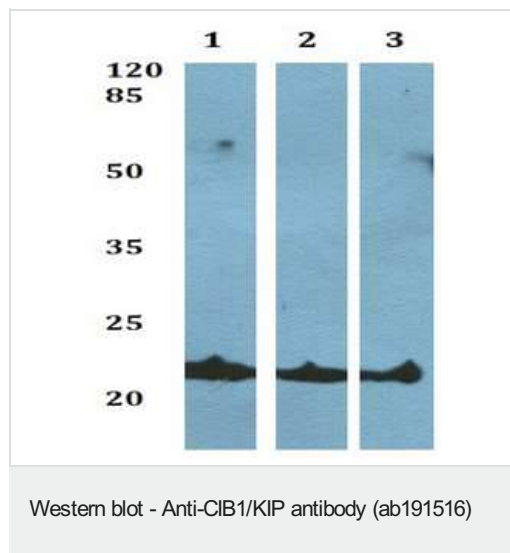
Sequence similarities

Contains 2 EF-hand domains.

Cellular localization

Membrane. Cytoplasm. Nucleus. Cell projection > filopodium. Apical cell membrane. Localizes to the perinuclear region in the presence of NBR1. Colocalizes with TAS1R2 in apical regions of taste receptor cells.

Images



All lanes : Anti-CIB1/KIP antibody (ab191516)

Lane 1 : HEK293T whole cell lysate

Lane 2 : H9C2 whole cell lysate

Lane 3 : Rat brain tissue lysate

Predicted band size: 22 kDa

Please note: All products are "FOR RESEARCH USE ONLY. NOT FOR USE IN DIAGNOSTIC PROCEDURES"

Our Abpromise to you: Quality guaranteed and expert technical support

- Replacement or refund for products not performing as stated on the datasheet
- Valid for 12 months from date of delivery
- Response to your inquiry within 24 hours

- We provide support in Chinese, English, French, German, Japanese and Spanish
- Extensive multi-media technical resources to help you
- We investigate all quality concerns to ensure our products perform to the highest standards

If the product does not perform as described on this datasheet, we will offer a refund or replacement. For full details of the Abpromise, please visit <https://www.abcam.com/abpromise> or contact our technical team.

Terms and conditions

- Guarantee only valid for products bought direct from Abcam or one of our authorized distributors