



Product datasheet

Anti-CIDE A antibody ab191193

[1 References](#) [2 Images](#)

Overview

Product name	Anti-CIDE A antibody
Description	Rabbit polyclonal to CIDE A
Host species	Rabbit
Tested applications	Suitable for: WB, IHC-P
Species reactivity	Reacts with: Human
Immunogen	Synthetic peptide corresponding to Human CIDE A aa 150 to the C-terminus (C terminal) conjugated to keyhole limpet haemocyanin. Database link: O60543
	 Run BLAST with  Run BLAST with
Positive control	Human liver tissue; CEM cell lysate.
General notes	<p>The Life Science industry has been in the grips of a reproducibility crisis for a number of years. Abcam is leading the way in addressing this with our range of recombinant monoclonal antibodies and knockout edited cell lines for gold-standard validation. Please check that this product meets your needs before purchasing.</p> <p>If you have any questions, special requirements or concerns, please send us an inquiry and/or contact our Support team ahead of purchase. Recommended alternatives for this product can be found below, along with publications, customer reviews and Q&As</p>

Properties

Form	Liquid
Storage instructions	Shipped at 4°C. Store at +4°C short term (1-2 weeks). Upon delivery aliquot. Store at -20°C long term. Avoid freeze / thaw cycle.
Storage buffer	pH: 7.4 Preservative: 0.09% Sodium azide Constituent: 99% PBS
Purity	Immunogen affinity purified
Clonality	Polyclonal
Isotype	IgG

Applications

The Abpromise guarantee Our **Abpromise guarantee** covers the use of ab191193 in the following tested applications.

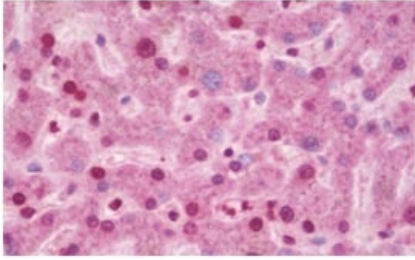
The application notes include recommended starting dilutions; optimal dilutions/concentrations should be determined by the end user.

Application	Abreviews	Notes
WB		1/1000. Predicted molecular weight: 24 kDa.
IHC-P		1/100.

Target

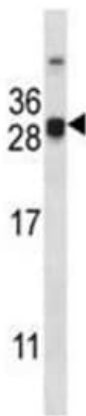
Function	Acts as a CEBPB coactivator in mammary epithelial cells to control the expression of a subset of CEBPB downstream target genes, including ID2, IGF1, PRLR, SOCS1, SOCS3, XDH, but not casein. By interacting with CEBPB, strengthens the association of CEBPB with the XDH promoter, increases histone acetylation and dissociates HDAC1 from the promoter (By similarity). Binds to lipid droplets and regulates their enlargement, thereby restricting lipolysis and favoring storage. At focal contact sites between lipid droplets, promotes directional net neutral lipid transfer from the smaller to larger lipid droplets. The transfer direction may be driven by the internal pressure difference between the contacting lipid droplet pair and occurs at a lower rate than that promoted by CIDEC. When overexpressed, induces apoptosis. The physiological significance of its role in apoptosis is unclear.
Tissue specificity	Expressed in omental and subcutaneous adipose tissue (at protein level).
Involvement in disease	In omental and subcutaneous adipose tissue of obese patients matched for BMI, expression levels correlate with insulin sensitivity. Expression is increased 5-6 fold in the group of patients with high insulin sensitivity, compared to the insulin-resistant group. This observation is consistent with the idea that triglyceride storage in adipocytes plays an important role in sequestering triglycerides and fatty acids away from the circulation and peripheral tissues, thus enhancing insulin sensitivity in liver and muscle.
Sequence similarities	Contains 1 CIDE-N domain.
Cellular localization	Lipid droplet. Nucleus. Enriched at lipid droplet contact sites. Has been shown to localize to mitochondria, where it could interact with UCP1 and hence inhibit UCP1 uncoupling activity (By similarity). These data could not be confirmed (PubMed:18509062).

Images



Immunohistochemistry (Formalin/PFA-fixed paraffin-embedded sections) - Anti-CIDE A antibody (ab191193)

Immunohistochemical analysis of paraffin embedded formalin fixed human liver tissue labeling CIDE A using ab191193 at 1/100 dilution.



Western blot - Anti-CIDE A antibody (ab191193)

Anti-CIDE A antibody (ab191193) at 1/1000 dilution + CEM cell lysate at 35 µg

Predicted band size: 24 kDa

Please note: All products are "FOR RESEARCH USE ONLY. NOT FOR USE IN DIAGNOSTIC PROCEDURES"

Our Abpromise to you: Quality guaranteed and expert technical support

- Replacement or refund for products not performing as stated on the datasheet
- Valid for 12 months from date of delivery
- Response to your inquiry within 24 hours
- We provide support in Chinese, English, French, German, Japanese and Spanish
- Extensive multi-media technical resources to help you
- We investigate all quality concerns to ensure our products perform to the highest standards

If the product does not perform as described on this datasheet, we will offer a refund or replacement. For full details of the Abpromise, please visit <https://www.abcam.com/abpromise> or contact our technical team.

Terms and conditions

- Guarantee only valid for products bought direct from Abcam or one of our authorized distributors