

Product datasheet

Anti-CIP75 antibody ab106443

★★★★★ [2 Abreviews](#) [4 References](#) [2 Images](#)

Overview

Product name	Anti-CIP75 antibody
Description	Rabbit polyclonal to CIP75
Host species	Rabbit
Tested applications	Suitable for: IHC-P, WB
Species reactivity	Reacts with: Mouse
Immunogen	Synthetic peptide corresponding to Human CIP75 (N terminal). Database link: Q9NRR5
Positive control	3T3 cell lysate, Mouse kidney tissue.
General notes	<p>The Life Science industry has been in the grips of a reproducibility crisis for a number of years. Abcam is leading the way in addressing this with our range of recombinant monoclonal antibodies and knockout edited cell lines for gold-standard validation. Please check that this product meets your needs before purchasing.</p> <p>If you have any questions, special requirements or concerns, please send us an inquiry and/or contact our Support team ahead of purchase. Recommended alternatives for this product can be found below, along with publications, customer reviews and Q&As</p>

Properties

Form	Liquid
Storage instructions	Shipped at 4°C. Store at 4°C (stable for up to 12 months).
Storage buffer	pH: 7.2 Preservative: 0.02% Sodium azide Constituent: PBS
Purity	Immunogen affinity purified
Clonality	Polyclonal
Isotype	IgG

Applications

The Abpromise guarantee Our [Abpromise guarantee](#) covers the use of ab106443 in the following tested applications.

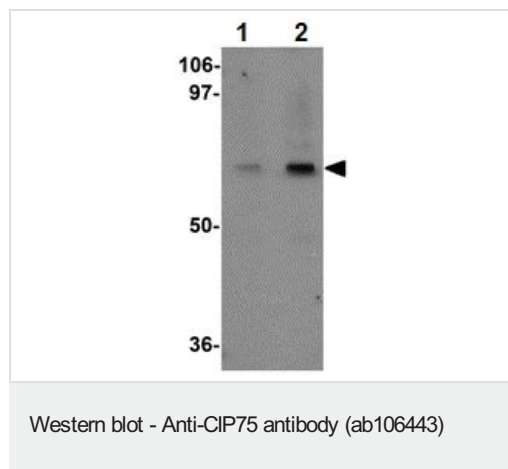
The application notes include recommended starting dilutions; optimal dilutions/concentrations should be determined by the end user.

Application	Abreviews	Notes
IHC-P		Use a concentration of 5 µg/ml. Perform heat mediated antigen retrieval via the microwave method before commencing with IHC staining protocol.
WB	★★★★★ (1)	Use a concentration of 1 - 2 µg/ml. Predicted molecular weight: 64 kDa.

Target

Tissue specificity	Highly expressed in pancreas, kidney, skeletal muscle, heart and throughout the brain, and at lower levels in placenta, lung and liver.
Sequence similarities	Contains 1 UBA domain. Contains 1 ubiquitin-like domain.
Post-translational modifications	Phosphorylated upon DNA damage, probably by ATM or ATR.
Cellular localization	Nucleus. Cytoplasm. Endoplasmic reticulum. May associate with the endoplasmic reticulum.

Images



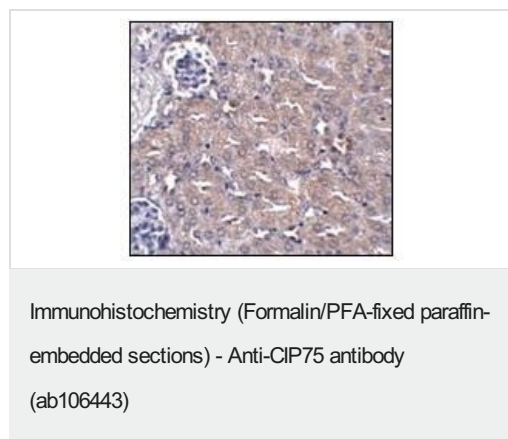
Lane 1 : Anti-CIP75 antibody (ab106443) at 1 µg/ml

Lane 2 : Anti-CIP75 antibody (ab106443) at 2 µg/ml

All lanes : 3T3 cell lysate

Lysates/proteins at 15 µg per lane.

Predicted band size: 64 kDa



ab106443, at 5 ug/ml, staining CIP75 in Mouse kidney tissue by immunohistochemistry.

Please note: All products are "FOR RESEARCH USE ONLY. NOT FOR USE IN DIAGNOSTIC PROCEDURES"

Our Abpromise to you: Quality guaranteed and expert technical support

- Replacement or refund for products not performing as stated on the datasheet
- Valid for 12 months from date of delivery
- Response to your inquiry within 24 hours

- We provide support in Chinese, English, French, German, Japanese and Spanish
- Extensive multi-media technical resources to help you
- We investigate all quality concerns to ensure our products perform to the highest standards

If the product does not perform as described on this datasheet, we will offer a refund or replacement. For full details of the Abpromise, please visit <https://www.abcam.com/abpromise> or contact our technical team.

Terms and conditions

- Guarantee only valid for products bought direct from Abcam or one of our authorized distributors