


Anti-CKAP1/TBCB antibody ab96101

[1 References](#) [4 Images](#)

Overview

Product name	Anti-CKAP1/TBCB antibody
Description	Rabbit polyclonal to CKAP1/TBCB
Host species	Rabbit
Tested applications	Suitable for: WB, IHC-P, ICC/IF
Species reactivity	Reacts with: Mouse, Human Predicted to work with: Rat, Cow 
Immunogen	Recombinant fragment corresponding to Human CKAP1/TBCB aa 1-213. Database link: NP_001272
Positive control	WB: A431, H1299, HeLa and NIH/3T3 whole cell lysates. IHC-P: H1299 xenograft ICC/IF: A549 cells.
General notes	<p>The Life Science industry has been in the grips of a reproducibility crisis for a number of years. Abcam is leading the way in addressing this with our range of recombinant monoclonal antibodies and knockout edited cell lines for gold-standard validation. Please check that this product meets your needs before purchasing.</p> <p>If you have any questions, special requirements or concerns, please send us an inquiry and/or contact our Support team ahead of purchase. Recommended alternatives for this product can be found below, along with publications, customer reviews and Q&As</p>

Properties

Form	Liquid
Storage instructions	Shipped at 4°C. Upon delivery aliquot and store at -20°C or -80°C. Avoid repeated freeze / thaw cycles.
Storage buffer	pH: 7.00 Preservative: 0.01% Thimerosal (merthiolate) Constituents: 1.21% Tris, 0.75% Glycine, 10% Glycerol (glycerin, glycerine)
Purity	Immunogen affinity purified
Clonality	Polyclonal
Isotype	IgG

Applications

The Abpromise guarantee

Our **Abpromise guarantee** covers the use of ab96101 in the following tested applications.

The application notes include recommended starting dilutions; optimal dilutions/concentrations should be determined by the end user.

Application	Abreviews	Notes
WB		1/500 - 1/3000. Predicted molecular weight: 27 kDa.
IHC-P		1/100 - 1/500.
ICC/IF		1/100 - 1/1000.

Target

Function

Binds to alpha-tubulin folding intermediates after their interaction with cytosolic chaperonin in the pathway leading from newly synthesized tubulin to properly folded heterodimer. Involved in regulation of tubulin heterodimer dissociation. May function as a negative regulator of axonal growth.

Tissue specificity

Found in most tissues.

Sequence similarities

Belongs to the TBCB family.
Contains 1 CAP-Gly domain.

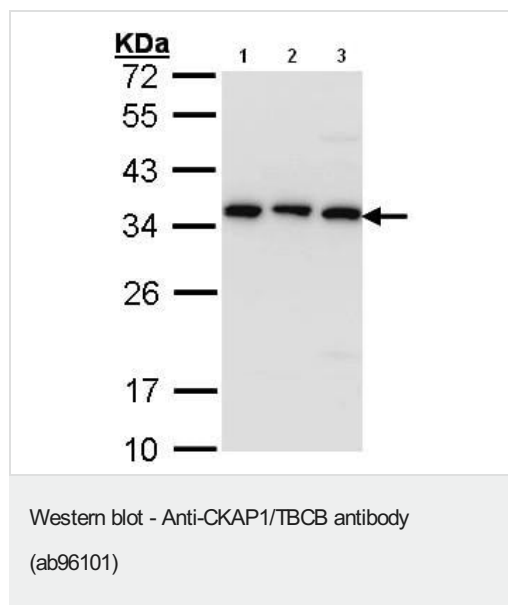
Post-translational modifications

Phosphorylation by PAK1 is required for normal function. Phosphorylated upon DNA damage, probably by ATM or ATR.
Ubiquitinated in the presence of GAN which targets it for degradation by the proteasome.

Cellular localization

Cytoplasm. Cytoplasm > cytoskeleton. Colocalizes with microtubules. In differentiated neurons, located in the cytoplasm. In differentiating neurons, accumulates at the growth cone.

Images



All lanes : Anti-CKAP1/TBCB antibody (ab96101) at 1/1000 dilution

Lane 1 : A431 whole cell lysate

Lane 2 : H1299 whole cell lysate

Lane 3 : HeLa whole cell lysate

Lysates/proteins at 30 µg per lane.

Predicted band size: 27 kDa

12% SDS PAGE



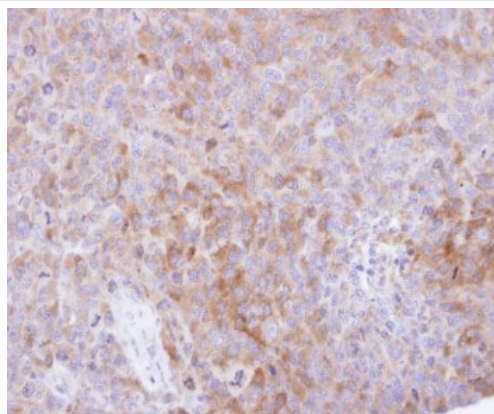
Costained with Hoechst 33342



Immunocytochemistry/ Immunofluorescence - Anti-CKAP1/TBCB antibody (ab96101)

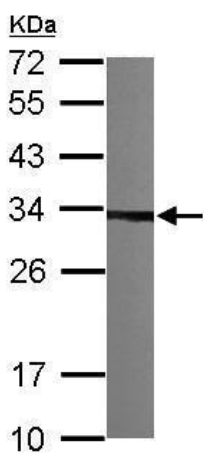
Methanol-fixed A549 (human lung carcinoma cell line) cells labeling CKAP1/TBCB using ab96101 at 1/500 dilution (green) in ICC/IF.

The nuclear counter stain is Hoechst 33342 (blue).



Immunohistochemistry (Formalin/PFA-fixed paraffin-embedded sections) - Anti-CKAP1/TBCB antibody (ab96101)

ab96101, at a 1/500 dilution, staining CKAP1/TBCB in paraffin embedded H1299 xenograft by Immunohistochemical analysis.



Western blot - Anti-CKAP1/TBCB antibody (ab96101)

Anti-CKAP1/TBCB antibody (ab96101) at 1/1000 dilution + NIH/3T3 (mouse embryo fibroblast cell line) whole cell lysate at 30 μ g

Predicted band size: 27 kDa

Please note: All products are "FOR RESEARCH USE ONLY. NOT FOR USE IN DIAGNOSTIC PROCEDURES"

Our Abpromise to you: Quality guaranteed and expert technical support

- Replacement or refund for products not performing as stated on the datasheet
- Valid for 12 months from date of delivery
- Response to your inquiry within 24 hours

- We provide support in Chinese, English, French, German, Japanese and Spanish
- Extensive multi-media technical resources to help you
- We investigate all quality concerns to ensure our products perform to the highest standards

If the product does not perform as described on this datasheet, we will offer a refund or replacement. For full details of the Abpromise, please visit <https://www.abcam.com/abpromise> or contact our technical team.

Terms and conditions

- Guarantee only valid for products bought direct from Abcam or one of our authorized distributors