


Product datasheet

Anti-CKLF antibody [EPR11985(2)] - C-terminal ab180512

Recombinant RabMAb

[3 References](#) [4 Images](#)

Overview

Product name	Anti-CKLF antibody [EPR11985(2)] - C-terminal
Description	Rabbit monoclonal [EPR11985(2)] to CKLF - C-terminal
Host species	Rabbit
Tested applications	Suitable for: WB, IHC-P
Species reactivity	Reacts with: Human Predicted to work with: Mouse, Rat 
Immunogen	Synthetic peptide within Human CKLF aa 100 to the C-terminus (C terminal). The exact sequence is proprietary. Database link: Q9UBR5
Positive control	K562, HeLa, Jurkat and THP-1 cell lysates, Paraffin-embedded Human pancreas tissue
General notes	This product is a recombinant monoclonal antibody, which offers several advantages including: <ul style="list-style-type: none">- High batch-to-batch consistency and reproducibility- Improved sensitivity and specificity- Long-term security of supply- Animal-free production For more information see here . Our RabMAb [®] technology is a patented hybridoma-based technology for making rabbit monoclonal antibodies. For details on our patents, please refer to RabMAb[®] patents .

Properties

Form	Liquid
Storage instructions	Shipped at 4°C. Store at +4°C short term (1-2 weeks). Upon delivery aliquot. Store at -20°C long term. Avoid freeze / thaw cycle.
Storage buffer	Preservative: 0.01% Sodium azide Constituents: 59% PBS, 40% Glycerol (glycerin, glycerine), 0.05% BSA
Purity	Protein A purified
Clonality	Monoclonal

Clone number EPR11985(2)
Isotype IgG

Applications

The Abpromise guarantee Our **Abpromise guarantee** covers the use of ab180512 in the following tested applications. The application notes include recommended starting dilutions; optimal dilutions/concentrations should be determined by the end user.

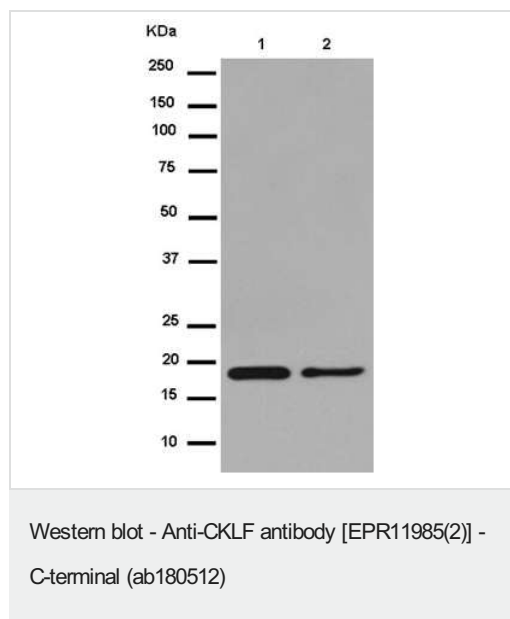
Application	Abreviews	Notes
WB		1/1000 - 1/10000. Detects a band of approximately 17 kDa (predicted molecular weight: 17 kDa).
IHC-P		1/100. Perform heat mediated antigen retrieval with Tris/EDTA buffer pH 9.0 before commencing with IHC staining protocol.

Target

Relevance CKLF is a cytokine. Cytokines are small proteins that have an essential role in the immune and inflammatory responses. This gene is one of several chemokine-like factor genes located in a cluster on chromosome 16. CKLF protein is a potent chemoattractant for neutrophils, monocytes and lymphocytes. It also can stimulate the proliferation of skeletal muscle cells. CKLF may play important roles in inflammation and in the regeneration of skeletal muscle. Alternatively spliced transcript variants encoding different isoforms have been identified.

Cellular localization Cell Membrane; Multi-pass membrane protein or Secreted

Images



All lanes : Anti-CKLF antibody [EPR11985(2)] - C-terminal (ab180512) at 1/5000 dilution

Lane 1 : K562 cell lysate

Lane 2 : HeLa cell lysate

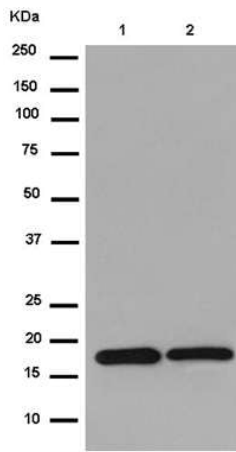
Lysates/proteins at 20 µg per lane.

Secondary

All lanes : Goat Anti-Rabbit IgG, (H+L), Peroxidase conjugated at 1/1000 dilution

Predicted band size: 17 kDa

Observed band size: 17 kDa



Western blot - Anti-CKLF antibody [EPR11985(2)] - C-terminal (ab180512)

All lanes : Anti-CKLF antibody [EPR11985(2)] - C-terminal (ab180512) at 1/1000 dilution

Lane 1 : Jurkat cell lysate

Lane 2 : THP-1 cell lysate

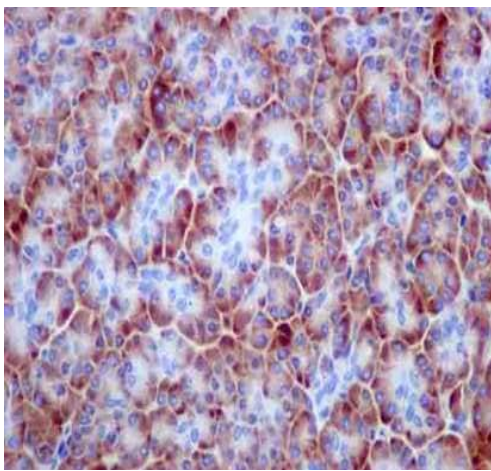
Lysates/proteins at 20 µg per lane.

Secondary

All lanes : Goat Anti-Rabbit IgG, (H+L), Peroxidase conjugated at 1/1000 dilution

Predicted band size: 17 kDa

Observed band size: 17 kDa



Immunohistochemistry (Formalin/PFA-fixed paraffin-embedded sections) - Anti-CKLF antibody [EPR11985(2)] - C-terminal (ab180512)

Immunohistochemical analysis of paraffin-embedded Human pancreas tissue labeling CKLF with ab180512 at 1/100 dilution. Anti-rabbit HRP secondary antibody was used and counterstained with Hematoxylin.

Perform heat mediated antigen retrieval with EDTA buffer pH 9 before commencing with IHC staining protocol.

Why choose a recombinant antibody?



Research with confidence
Consistent and reproducible results



Long-term and scalable supply
Recombinant technology



Success from the first experiment
Confirmed specificity



Ethical standards compliant
Animal-free production

Anti-CKLF antibody [EPR11985(2)] - C-terminal
(ab180512)

Please note: All products are "FOR RESEARCH USE ONLY. NOT FOR USE IN DIAGNOSTIC PROCEDURES"

Our Abpromise to you: Quality guaranteed and expert technical support

- Replacement or refund for products not performing as stated on the datasheet
- Valid for 12 months from date of delivery
- Response to your inquiry within 24 hours
- We provide support in Chinese, English, French, German, Japanese and Spanish
- Extensive multi-media technical resources to help you
- We investigate all quality concerns to ensure our products perform to the highest standards

If the product does not perform as described on this datasheet, we will offer a refund or replacement. For full details of the Abpromise, please visit <https://www.abcam.com/abpromise> or contact our technical team.

Terms and conditions

- Guarantee only valid for products bought direct from Abcam or one of our authorized distributors