


Product datasheet

Anti-CKMT2 antibody ab151450

3 Images

Overview

Product name	Anti-CKMT2 antibody
Description	Rabbit polyclonal to CKMT2
Host species	Rabbit
Tested applications	Suitable for: WB, IHC-P, ICC/IF
Species reactivity	Reacts with: Human Predicted to work with: Mouse, Rat, Cow, Dog, Pig 
Immunogen	Recombinant fragment corresponding to a region within amino acids 1 and 224 of Human CKMT2 (UniProt ID: P17540).
Positive control	293T, A431, HeLa and HepG2 cell lysates; Cal27 xenograft tissue.
General notes	<p>The Life Science industry has been in the grips of a reproducibility crisis for a number of years. Abcam is leading the way in addressing this with our range of recombinant monoclonal antibodies and knockout edited cell lines for gold-standard validation. Please check that this product meets your needs before purchasing.</p> <p>If you have any questions, special requirements or concerns, please send us an inquiry and/or contact our Support team ahead of purchase. Recommended alternatives for this product can be found below, along with publications, customer reviews and Q&As</p>

Properties

Form	Liquid
Storage instructions	Shipped at 4°C. Upon delivery aliquot. Store at -20°C or -80°C. Avoid freeze / thaw cycle.
Storage buffer	pH: 7.00 Preservative: 0.01% Thimerosal (merthiolate) Constituents: 1.21% Tris, 0.75% Glycine, 10% Glycerol (glycerin, glycerine)
Purity	Immunogen affinity purified
Clonality	Polyclonal
Isotype	IgG

Applications

The Abpromise guarantee

Our **Abpromise guarantee** covers the use of ab151450 in the following tested applications.

The application notes include recommended starting dilutions; optimal dilutions/concentrations should be determined by the end user.

Application	Abreviews	Notes
WB		1/500 - 1/3000. Predicted molecular weight: 48 kDa.
IHC-P		1/100 - 1/1000. Perform heat mediated antigen retrieval with citrate buffer pH 6 before commencing with IHC staining protocol.
ICC/IF		1/100 - 1/1000.

Target

Function

Reversibly catalyzes the transfer of phosphate between ATP and various phosphogens (e.g. creatine phosphate). Creatine kinase isoenzymes play a central role in energy transduction in tissues with large, fluctuating energy demands, such as skeletal muscle, heart, brain and spermatozoa.

Tissue specificity

Sarcomere-specific. Found only in heart and skeletal muscles.

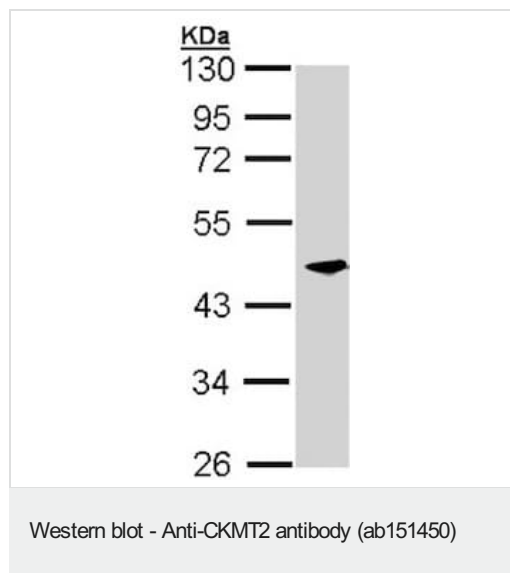
Sequence similarities

Belongs to the ATP:guanido phosphotransferase family.
Contains 1 phosphagen kinase C-terminal domain.
Contains 1 phosphagen kinase N-terminal domain.

Cellular localization

Mitochondrion inner membrane.

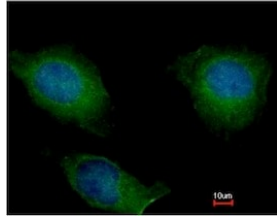
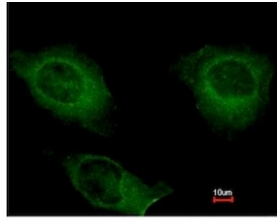
Images



Anti-CKMT2 antibody (ab151450) at 1/1000 dilution + HeLa whole cell lysate at 30 µg

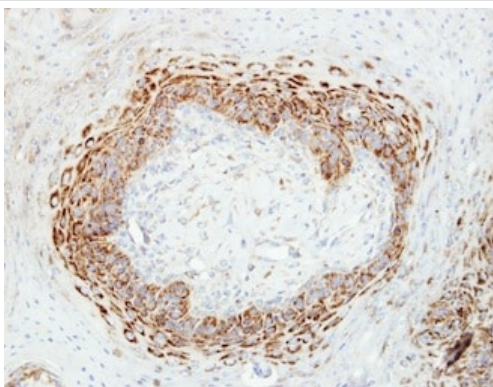
Predicted band size: 48 kDa

10% SDS PAGE



Immunofluorescence analysis of methanol-fixed HeLa cells labeling CKMT2 with ab151450 at 1/500 dilution. The lower image was co-stained with Hoescht 33342.

Immunocytochemistry/ Immunofluorescence - Anti-CKMT2 antibody (ab151450)



Immunohistochemical analysis of paraffin embedded Cal27 xenograft tissue labeling CKMT2 with ab151450 at 1/500 dilution.

Immunohistochemistry (Formalin/PFA-fixed paraffin-embedded sections) - Anti-CKMT2 antibody (ab151450)

Please note: All products are "FOR RESEARCH USE ONLY. NOT FOR USE IN DIAGNOSTIC PROCEDURES"

Our Abpromise to you: Quality guaranteed and expert technical support

- Replacement or refund for products not performing as stated on the datasheet
- Valid for 12 months from date of delivery
- Response to your inquiry within 24 hours
- We provide support in Chinese, English, French, German, Japanese and Spanish
- Extensive multi-media technical resources to help you

- We investigate all quality concerns to ensure our products perform to the highest standards

If the product does not perform as described on this datasheet, we will offer a refund or replacement. For full details of the Abpromise, please visit <https://www.abcam.com/abpromise> or contact our technical team.

Terms and conditions

- Guarantee only valid for products bought direct from Abcam or one of our authorized distributors