


Product datasheet

Anti-CKS1 antibody ab72639

[3 References](#) [2 Images](#)

Overview

Product name	Anti-CKS1 antibody
Description	Rabbit polyclonal to CKS1
Host species	Rabbit
Tested applications	Suitable for: WB, ICC/IF
Species reactivity	Reacts with: Human Predicted to work with: Mouse 
Immunogen	Synthetic peptide derived from the N terminus of human CKS1.
Positive control	Extracts from Jurkat cells, treated with serum (20%, 15mins). HeLa cells.
General notes	<p>The Life Science industry has been in the grips of a reproducibility crisis for a number of years. Abcam is leading the way in addressing this with our range of recombinant monoclonal antibodies and knockout edited cell lines for gold-standard validation. Please check that this product meets your needs before purchasing.</p> <p>If you have any questions, special requirements or concerns, please send us an inquiry and/or contact our Support team ahead of purchase. Recommended alternatives for this product can be found below, along with publications, customer reviews and Q&As</p>

Properties

Form	Liquid
Storage instructions	Shipped at 4°C. Store at -20°C. Stable for 12 months at -20°C.
Storage buffer	pH: 7.40 Preservative: 0.02% Sodium azide Constituents: 50% Glycerol (glycerin, glycerine), 0.87% Sodium chloride, PBS
Purity	Without Mg ²⁺ and Ca ²⁺ Immunogen affinity purified
Clonality	Polyclonal
Isotype	IgG

Applications

The Abpromise guarantee

Our **Abpromise guarantee** covers the use of ab72639 in the following tested applications.

The application notes include recommended starting dilutions; optimal dilutions/concentrations should be determined by the end user.

Application	Abreviews	Notes
WB		1/500 - 1/1000. Detects a band of approximately <19 kDa (predicted molecular weight: 10 kDa).
ICC/IF		1/500 - 1/1000.

Target

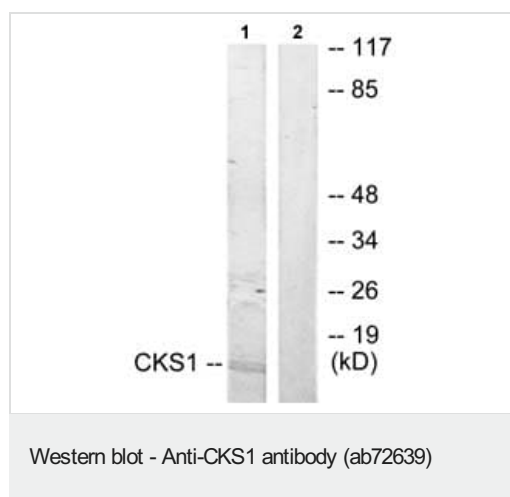
Function

Binds to the catalytic subunit of the cyclin dependent kinases and is essential for their biological function.

Sequence similarities

Belongs to the CKS family.

Images



All lanes : Anti-CKS1 antibody (ab72639) at 1/500 dilution

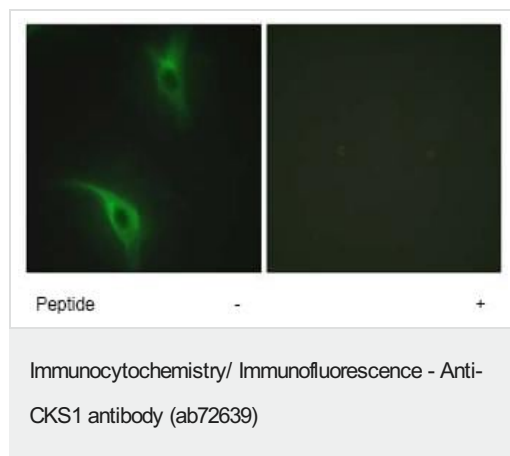
Lane 1 : Extracts from Jurkat cells, treated with serum (20%, 15mins)

Lane 2 : Extracts from Jurkat cells, treated with serum (20%, 15mins) with immunising peptide at 5 µg

Lysates/proteins at 5 µg per lane.

Predicted band size: 10 kDa

Observed band size: <19 kDa



ab72639, at 1/500 dilution, staining CKS1 in HeLa cells by Immunofluorescence in the absence or presence of the immunising peptide.

Our Abpromise to you: Quality guaranteed and expert technical support

- Replacement or refund for products not performing as stated on the datasheet
- Valid for 12 months from date of delivery
- Response to your inquiry within 24 hours

- We provide support in Chinese, English, French, German, Japanese and Spanish
- Extensive multi-media technical resources to help you
- We investigate all quality concerns to ensure our products perform to the highest standards

If the product does not perform as described on this datasheet, we will offer a refund or replacement. For full details of the Abpromise, please visit <https://www.abcam.com/abpromise> or contact our technical team.

Terms and conditions

- Guarantee only valid for products bought direct from Abcam or one of our authorized distributors