


# Anti-Clathrin heavy chain antibody [EPR12235(B)] - BSA and Azide free ab240172

Recombinant RabMAb

3 Images

### Overview

Product name	Anti-Clathrin heavy chain antibody [EPR12235(B)] - BSA and Azide free
Description	Rabbit monoclonal [EPR12235(B)] to Clathrin heavy chain - BSA and Azide free
Host species	Rabbit
Tested applications	<b>Suitable for:</b> IHC-P, ICC/IF, WB <b>Unsuitable for:</b> Flow Cyt or IP
Species reactivity	<b>Reacts with:</b> Mouse, Human <b>Predicted to work with:</b> Rat, Cow 
Immunogen	Synthetic peptide. This information is proprietary to Abcam and/or its suppliers.
General notes	<p>ab240172 is the carrier-free version of <a href="#">ab172958</a>.</p> <p>Our <b>carrier-free</b> antibodies are typically supplied in a PBS-only formulation, purified and free of BSA, sodium azide and glycerol. The carrier-free buffer and high concentration allow for increased conjugation efficiency.</p> <p>This conjugation-ready format is designed for use with fluorochromes, metal isotopes, oligonucleotides, and enzymes, which makes them ideal for antibody labelling, functional and cell-based assays, flow-based assays (e.g. mass cytometry) and Multiplex Imaging applications.</p> <p>Use our <b>conjugation kits</b> for antibody conjugates that are ready-to-use in as little as 20 minutes with &lt;1 minute hands-on-time and 100% antibody recovery: available for fluorescent dyes, HRP, biotin and gold.</p> <p>This product is compatible with the Maxpar<sup>®</sup> Antibody Labeling Kit from Fluidigm, without the need for antibody preparation. Maxpar<sup>®</sup> is a trademark of Fluidigm Canada Inc.</p> <p>This product is a recombinant monoclonal antibody, which offers several advantages including:</p> <ul style="list-style-type: none"> <li>- High batch-to-batch consistency and reproducibility</li> <li>- Improved sensitivity and specificity</li> <li>- Long-term security of supply</li> <li>- Animal-free production</li> </ul> <p>For more information <a href="#">see here</a>.</p> <p>Our RabMAb<sup>®</sup> technology is a patented hybridoma-based technology for making rabbit monoclonal antibodies. For details on our patents, please refer to <a href="#">RabMAb<sup>®</sup> patents</a>.</p>

## Properties

Form	Liquid
Storage instructions	Shipped at 4°C. Store at +4°C. Do Not Freeze.
Storage buffer	pH: 7.2 Constituent: PBS
Carrier free	Yes
Purity	Protein A purified
Clonality	Monoclonal
Clone number	EPR12235(B)
Isotype	IgG

## Applications

**The Abpromise guarantee** Our **Abpromise guarantee** covers the use of ab240172 in the following tested applications. The application notes include recommended starting dilutions; optimal dilutions/concentrations should be determined by the end user.

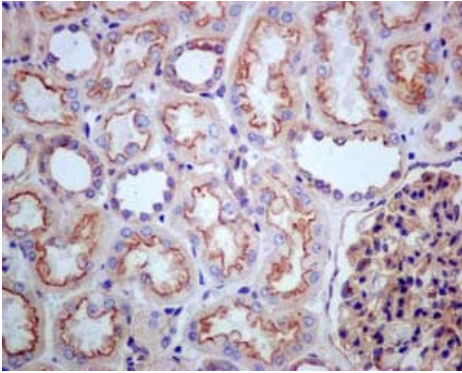
Application	Abreviews	Notes
IHC-P		Use at an assay dependent concentration. Perform heat mediated antigen retrieval before commencing with IHC staining protocol.
ICC/IF		Use at an assay dependent concentration.
WB		Use at an assay dependent concentration. Predicted molecular weight: 191 kDa.

**Application notes** Is unsuitable for Flow Cyt or IP.

## Target

Function	Clathrin is the major protein of the polyhedral coat of coated pits and vesicles. Two different adapter protein complexes link the clathrin lattice either to the plasma membrane or to the trans-Golgi network.
Sequence similarities	Belongs to the clathrin heavy chain family.
Cellular localization	Cytoplasmic vesicle membrane. Membrane > coated pit. Melanosome. Cytoplasmic face of coated pits and vesicles. Identified by mass spectrometry in melanosome fractions from stage I to stage IV.

## Images

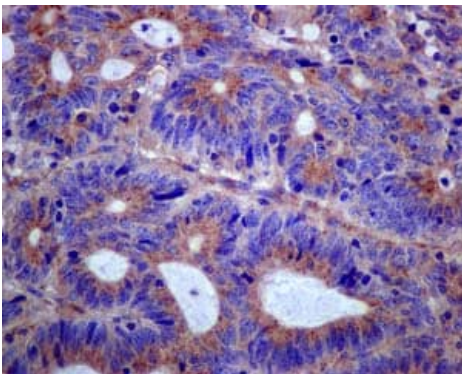


Immunohistochemistry (Formalin/PFA-fixed paraffin-embedded sections) - Anti-Clathrin heavy chain antibody [EPR12235(B)] - BSA and Azide free (ab240172)

Immunohistochemical analysis of paraffin-embedded human kidney tissue labeling Clathrin heavy chain with **ab172958** at 1/50 dilution

This data was developed using the same antibody clone in a different buffer formulation containing PBS, BSA, glycerol, and sodium azide (**ab172958**).

Perform heat mediated antigen retrieval before commencing with IHC staining protocol.



Immunohistochemistry (Formalin/PFA-fixed paraffin-embedded sections) - Anti-Clathrin heavy chain antibody [EPR12235(B)] - BSA and Azide free (ab240172)

Immunohistochemical analysis of paraffin-embedded Human colonic carcinoma tissue labeling Clathrin heavy chain with **ab172958** at 1/50 dilution

This data was developed using the same antibody clone in a different buffer formulation containing PBS, BSA, glycerol, and sodium azide (**ab172958**).

Perform heat mediated antigen retrieval before commencing with IHC staining protocol.

### Why choose a recombinant antibody?



**Research with confidence**  
Consistent and reproducible results



**Long-term and scalable supply**  
Recombinant technology



**Success from the first experiment**  
Confirmed specificity



**Ethical standards compliant**  
Animal-free production

Anti-Clathrin heavy chain antibody [EPR12235(B)] -  
BSA and Azide free (ab240172)

**Please note:** All products are "FOR RESEARCH USE ONLY. NOT FOR USE IN DIAGNOSTIC PROCEDURES"

### Our Abpromise to you: Quality guaranteed and expert technical support

---

- Replacement or refund for products not performing as stated on the datasheet
- Valid for 12 months from date of delivery
- Response to your inquiry within 24 hours
- We provide support in Chinese, English, French, German, Japanese and Spanish
- Extensive multi-media technical resources to help you
- We investigate all quality concerns to ensure our products perform to the highest standards

If the product does not perform as described on this datasheet, we will offer a refund or replacement. For full details of the Abpromise, please visit <https://www.abcam.com/abpromise> or contact our technical team.

### Terms and conditions

---

- Guarantee only valid for products bought direct from Abcam or one of our authorized distributors