

Anti-Clathrin heavy chain antibody [EPR24236-222] ab305259

Recombinant RabMAb

5 Images

Overview

Product name	Anti-Clathrin heavy chain antibody [EPR24236-222]
Description	Rabbit monoclonal [EPR24236-222] to Clathrin heavy chain
Host species	Rabbit
Specificity	The antibody detects both heavy chain 1 and 2.
Tested applications	Suitable for: WB, ICC/IF, Flow Cyt (Intra), IP Unsuitable for: IHC-P
Species reactivity	Reacts with: Human Does not react with: Mouse, Rat
Immunogen	Synthetic peptide. This information is proprietary to Abcam and/or its suppliers.
Positive control	WB: HeLa and HEK-293T whole cell lysate. ICC/IF: HeLa cells. Flow Cyt (Intra): HeLa cells. IP: HeLa whole cell lysate.
General notes	<p>This product is a recombinant monoclonal antibody, which offers several advantages including:</p> <ul style="list-style-type: none"> - High batch-to-batch consistency and reproducibility - Improved sensitivity and specificity - Long-term security of supply - Animal-free production <p>For more information see here.</p> <p>Our RabMAb[®] technology is a patented hybridoma-based technology for making rabbit monoclonal antibodies. For details on our patents, please refer to RabMAb[®] patents.</p>

Properties

Form	Liquid
Storage instructions	Shipped at 4°C. Store at +4°C short term (1-2 weeks). Upon delivery aliquot. Store at -20°C long term. Avoid freeze / thaw cycle.
Storage buffer	pH: 7.20 Preservative: 0.01% Sodium azide Constituents: 40% Glycerol (glycerin, glycerine), 0.05% BSA, 59% PBS

Purity	Protein A purified
Clonality	Monoclonal
Clone number	EPR24236-222
Isotype	IgG

Applications

The Abpromise guarantee Our **Abpromise guarantee** covers the use of ab305259 in the following tested applications.

The application notes include recommended starting dilutions; optimal dilutions/concentrations should be determined by the end user.

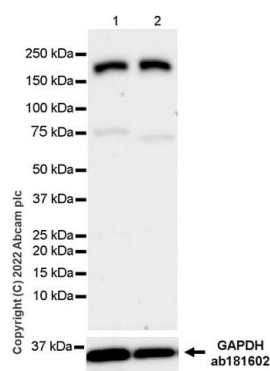
Application	Abreviews	Notes
WB		1/1000. Detects a band of approximately 180 kDa.
ICC/IF		1/50.
Flow Cyt (Intra)		1/500.
IP		1/30.

Application notes Is unsuitable for IHC-P.

Target

Function	Clathrin is the major protein of the polyhedral coat of coated pits and vesicles. Two different adapter protein complexes link the clathrin lattice either to the plasma membrane or to the trans-Golgi network.
Sequence similarities	Belongs to the clathrin heavy chain family.
Cellular localization	Cytoplasmic vesicle membrane. Membrane > coated pit. Melanosome. Cytoplasmic face of coated pits and vesicles. Identified by mass spectrometry in melanosome fractions from stage I to stage IV.

Images



Western blot - Anti-Clathrin heavy chain antibody [EPR24236-222] (ab305259)

All lanes : Anti-Clathrin heavy chain antibody [EPR24236-222] (ab305259) at 1/1000 dilution

Lane 1 : HeLa (human cervix adenocarcinoma epithelial cell) whole cell lysate

Lane 2 : 293T (human embryonic kidney epithelial cell) whole cell lysate

Lysates/proteins at 20 µg per lane.

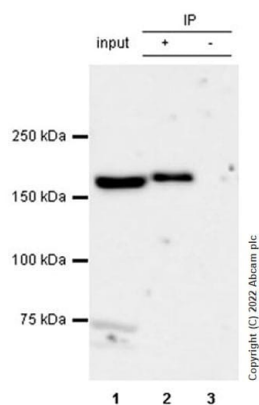
Secondary

All lanes : VeriBlot for IP Detection Reagent (HRP) ([ab131366](#)) at 1/2000 dilution

Observed band size: 180 kDa

Blocking and diluting buffer and concentration: 5% NFDm/TBST

Exposure time: 37 seconds



Immunoprecipitation - Anti-Clathrin heavy chain antibody [EPR24236-222] (ab305259)

Clathrin heavy chain was immunoprecipitated from 0.35 mg HeLa (human cervix adenocarcinoma epithelial cell) whole cell lysate 10 µg with ab305259 at 1/30 dilution (2µg in 0.35mg lysates). Western blot was performed on the immunoprecipitate using ab305259 at 1/1000 dilution. VeriBlot for IP secondary antibody (HRP) ([ab131366](#)) was used at 1/5000 dilution.

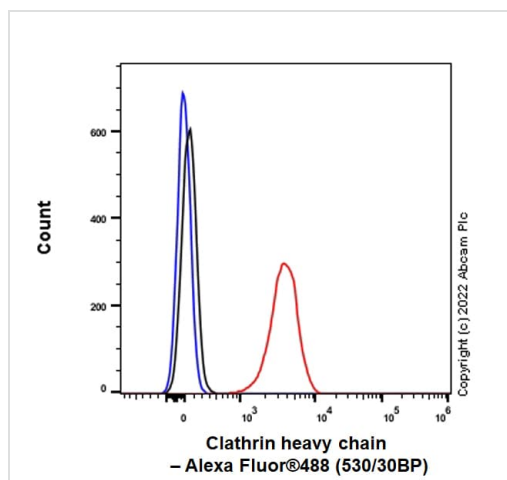
Lane 1: HeLa (human cervix adenocarcinoma epithelial cell) whole cell lysate 10 µg

Lane 2: ab305259 IP in HeLa whole cell lysate

Lane 3: Rabbit monoclonal IgG ([ab172730](#)) instead of ab305259 in HeLa whole cell lysate

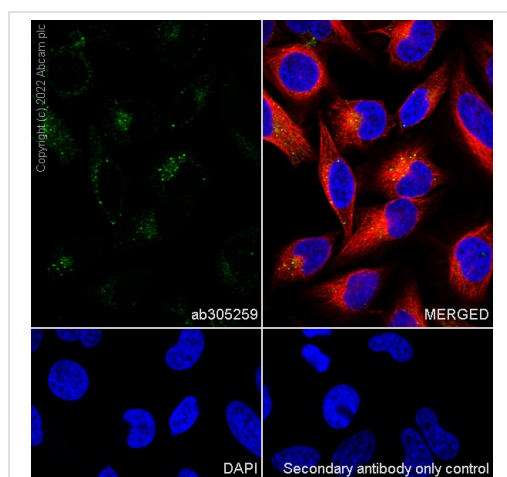
Blocking and dilution buffer and concentration: 5% NFDm/TBST.

Exposure time: 50 seconds



Flow Cytometry (Intracellular) - Anti-Clathrin heavy chain antibody [EPR24236-222] (ab305259)

Flow cytometric (Intracellular) analysis of 4% paraformaldehyde fixed 90% methanol permeabilized HeLa (human cervix adenocarcinoma epithelial cell) cells labelling Clathrin heavy chain with ab305259 at 1/500 dilution (0.1 µg) (Red) compared with a Rabbit monoclonal IgG (**ab172730**) (Black) isotype control and an unlabelled control (cells without incubation with primary antibody and secondary antibody) (Blue). A Goat Anti-Rabbit IgG (Alexa Fluor® 488, **ab150081**) at 1/2000 dilution was used as the secondary antibody.



Immunocytochemistry/ Immunofluorescence - Anti-Clathrin heavy chain antibody [EPR24236-222] (ab305259)

Immunofluorescent analysis of 4% Paraformaldehyde-fixed, 0.1% TritonX-100 permeabilized HeLa (human cervical adenocarcinoma epithelial cell) cells labelling Clathrin heavy chain with ab305259 at 1/50 dilution, followed by **ab150081** Goat Anti-Rabbit IgG H&L (Alexa Fluor® 488) preadsorbed antibody at 1/1000 dilution (Green). Confocal image showing punctuated cytoplasmic staining in HeLa cell line. The image was taken with a confocal microscope (Leica-Microsystems, TCS SP8). is observed. **ab195889** Anti-alpha Tubulin mouse monoclonal antibody - Microtubule Marker (Alexa Fluor® 594) was used to counterstain tubulin at 1/200 dilution (Red). The Nuclear counterstain was DAPI (Blue).

Secondary antibody only control: Secondary antibody is **ab150081** Goat Anti-Rabbit IgG H&L (Alexa Fluor® 488) preadsorbed at 1/1000 dilution.

Why choose a recombinant antibody?



Research with confidence
Consistent and reproducible results



Long-term and scalable supply
Recombinant technology



Success from the first experiment
Confirmed specificity



Ethical standards compliant
Animal-free production

Anti-Clathrin heavy chain antibody [EPR24236-222]
(ab305259)

Please note: All products are "FOR RESEARCH USE ONLY. NOT FOR USE IN DIAGNOSTIC PROCEDURES"

Our Abpromise to you: Quality guaranteed and expert technical support

- Replacement or refund for products not performing as stated on the datasheet
- Valid for 12 months from date of delivery
- Response to your inquiry within 24 hours
- We provide support in Chinese, English, French, German, Japanese and Spanish
- Extensive multi-media technical resources to help you
- We investigate all quality concerns to ensure our products perform to the highest standards

If the product does not perform as described on this datasheet, we will offer a refund or replacement. For full details of the Abpromise, please visit <https://www.abcam.com/abpromise> or contact our technical team.

Terms and conditions

- Guarantee only valid for products bought direct from Abcam or one of our authorized distributors