


## Product datasheet

# Anti-Claudin 1 antibody [SP128] ab115783

Recombinant RabMAb

3 Images

### Overview

<b>Product name</b>	Anti-Claudin 1 antibody [SP128]
<b>Description</b>	Rabbit monoclonal [SP128] to Claudin 1
<b>Host species</b>	Rabbit
<b>Tested applications</b>	<b>Suitable for:</b> IHC-P, Flow Cyt
<b>Species reactivity</b>	<b>Reacts with:</b> Human <b>Predicted to work with:</b> Mouse, Rat, Cow, Pig 
<b>Immunogen</b>	Synthetic peptide. This information is proprietary to Abcam and/or its suppliers.
<b>Positive control</b>	Human liver carcinoma tissue
<b>General notes</b>	<p>This product is a recombinant monoclonal antibody, which offers several advantages including:</p> <ul style="list-style-type: none"><li>- High batch-to-batch consistency and reproducibility</li><li>- Improved sensitivity and specificity</li><li>- Long-term security of supply</li><li>- Animal-free production</li></ul> <p>For more information <a href="#">see here</a>.</p> <p><b>This product is FOR RESEARCH USE ONLY. For commercial use, please contact <a href="mailto:partnerships@abcam.com">partnerships@abcam.com</a>.</b></p>

### Properties

<b>Form</b>	Liquid
<b>Storage instructions</b>	Shipped at 4°C. Upon delivery aliquot and store at -20°C. Avoid freeze / thaw cycles.
<b>Storage buffer</b>	pH: 7.60 Preservative: 0.1% Sodium azide Constituents: PBS, 1% BSA
<b>Purity</b>	Protein A/G purified
<b>Purification notes</b>	Purified from TCS by protein A/G.
<b>Clonality</b>	Monoclonal
<b>Clone number</b>	SP128
<b>Isotype</b>	IgG

## Applications

---

**The Abpromise guarantee** Our **Abpromise guarantee** covers the use of ab115783 in the following tested applications.

The application notes include recommended starting dilutions; optimal dilutions/concentrations should be determined by the end user.

Application	Abreviews	Notes
IHC-P		1/200. Perform heat mediated antigen retrieval with Tris/EDTA buffer pH 9.0 before commencing with IHC staining protocol.
Flow Cyt		1/100. <b>ab172730</b> - Rabbit monoclonal IgG, is suitable for use as an isotype control with this antibody.

## Target

---

### Function

Claudins function as major constituents of the tight junction complexes that regulate the permeability of epithelia. While some claudin family members play essential roles in the formation of impermeable barriers, others mediate the permeability to ions and small molecules. Often, several claudin family members are coexpressed and interact with each other, and this determines the overall permeability. CLDN1 is required to prevent the paracellular diffusion of small molecules through tight junctions in the epidermis and is required for the normal barrier function of the skin. Required for normal water homeostasis and to prevent excessive water loss through the skin, probably via an indirect effect on the expression levels of other proteins, since CLDN1 itself seems to be dispensable for water barrier formation in keratinocyte tight junctions (PubMed:23407391).

(Microbial infection) Acts as a receptor for hepatitis C virus in hepatocytes (PubMed:17325668). Acts as a receptor for dengue virus (PubMed:24074594).

### Tissue specificity

Strongly expressed in liver and kidney. Expressed in heart, brain, spleen, lung and testis.

### Involvement in disease

Ichthyosis-sclerosing cholangitis neonatal syndrome

### Sequence similarities

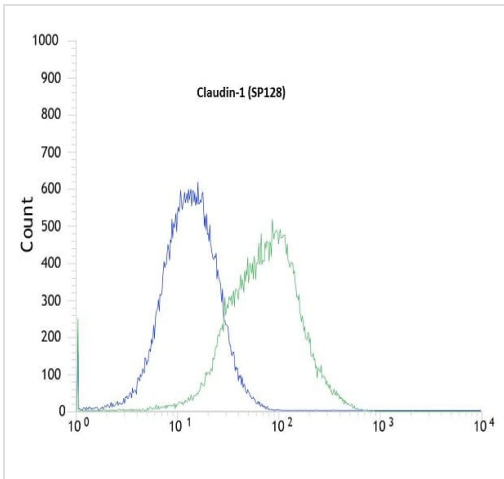
Belongs to the claudin family.

### Cellular localization

Cell junction, tight junction. Cell membrane.

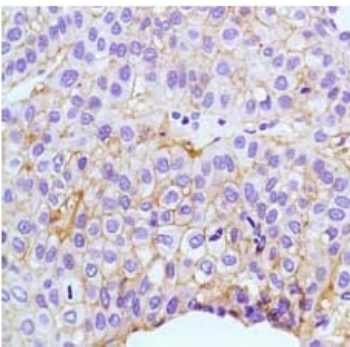
## Images

---



Flow cytometric analysis of rabbit anti-Claudin 1 (SP128) antibody ab115783 (1/100) in HepG2 cells(green) compared to negative control of rabbit IgG (blue).

Flow Cytometry - Anti-Claudin 1 antibody [SP128] (ab115783)



Staining of Human Claudin 1 in a Formalin/PFA-fixed paraffin-embedded section of Human Liver Carcinoma using ab115783 at a dilution of 1/200.

Immunohistochemistry (Formalin/PFA-fixed paraffin-embedded sections) - Anti-Claudin 1 antibody [SP128] (ab115783)

### Why choose a recombinant antibody?



**Research with confidence**  
Consistent and reproducible results



**Long-term and scalable supply**  
Recombinant technology



**Success from the first experiment**  
Confirmed specificity



**Ethical standards compliant**  
Animal-free production

Anti-Claudin 1 antibody [SP128] (ab115783)

**Please note:** All products are "FOR RESEARCH USE ONLY. NOT FOR USE IN DIAGNOSTIC PROCEDURES"

### Our Abpromise to you: Quality guaranteed and expert technical support

---

- Replacement or refund for products not performing as stated on the datasheet
- Valid for 12 months from date of delivery
- Response to your inquiry within 24 hours
- We provide support in Chinese, English, French, German, Japanese and Spanish
- Extensive multi-media technical resources to help you
- We investigate all quality concerns to ensure our products perform to the highest standards

If the product does not perform as described on this datasheet, we will offer a refund or replacement. For full details of the Abpromise, please visit <https://www.abcam.com/abpromise> or contact our technical team.

### Terms and conditions

---

- Guarantee only valid for products bought direct from Abcam or one of our authorized distributors