


# Anti-Claudin 5 (phospho Y217) antibody [EPR10810] ab172968

Recombinant RabMAb

[5 References](#) [4 Images](#)

### Overview

<b>Product name</b>	Anti-Claudin 5 (phospho Y217) antibody [EPR10810]
<b>Description</b>	Rabbit monoclonal [EPR10810] to Claudin 5 (phospho Y217)
<b>Host species</b>	Rabbit
<b>Tested applications</b>	<b>Suitable for:</b> WB, IP <b>Unsuitable for:</b> Flow Cyt, ICC/IF or IHC-P
<b>Species reactivity</b>	<b>Reacts with:</b> Human <b>Predicted to work with:</b> Rat  <b>Does not react with:</b> Mouse
<b>Immunogen</b>	Synthetic peptide. This information is proprietary to Abcam and/or its suppliers.
<b>Positive control</b>	WB: MCF7 cell lysate, treated with pervanadate; A431 cells treated with 50mM Pervanadate for 5 minutes.
<b>General notes</b>	<p>This product is a recombinant monoclonal antibody, which offers several advantages including:</p> <ul style="list-style-type: none"> <li>- High batch-to-batch consistency and reproducibility</li> <li>- Improved sensitivity and specificity</li> <li>- Long-term security of supply</li> <li>- Animal-free production</li> </ul> <p>For more information <a href="#">see here</a>.</p> <p>Our RabMAb<sup>®</sup> technology is a patented hybridoma-based technology for making rabbit monoclonal antibodies. For details on our patents, please refer to <a href="#">RabMAb<sup>®</sup> patents</a>.</p>

### Properties

<b>Form</b>	Liquid
<b>Storage instructions</b>	Shipped at 4°C. Store at +4°C short term (1-2 weeks). Upon delivery aliquot. Store at -20°C long term. Avoid freeze / thaw cycle.
<b>Storage buffer</b>	pH: 7.20 Preservative: 0.01% Sodium azide Constituents: 9% PBS, 40% Glycerol (glycerin, glycerine), 0.05% BSA, 50% Tissue culture supernatant

<b>Purity</b>	Tissue culture supernatant
<b>Clonality</b>	Monoclonal
<b>Clone number</b>	EPR10810
<b>Isotype</b>	IgG

## Applications

**The Abpromise guarantee** Our **Abpromise guarantee** covers the use of ab172968 in the following tested applications. The application notes include recommended starting dilutions; optimal dilutions/concentrations should be determined by the end user.

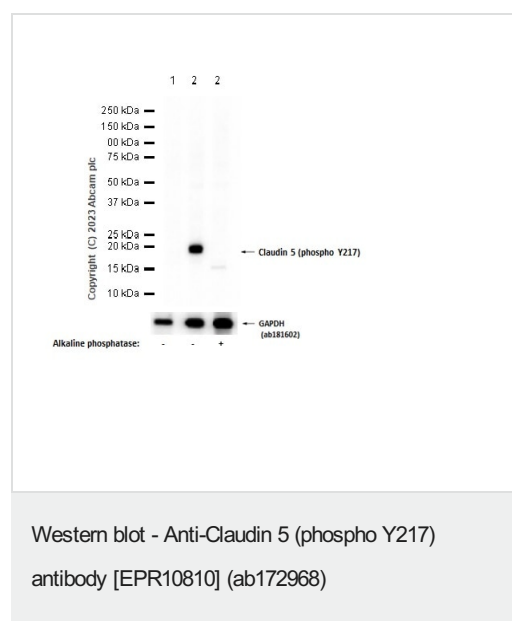
Application	Abreviews	Notes
<b>WB</b>		1/50000 - 1/200000. Detects a band of approximately 23 kDa (predicted molecular weight: 23 kDa).
<b>IP</b>		1/10 - 1/100.

**Application notes** Is unsuitable for Flow Cyt, ICC/IF or IHC-P.

## Target

<b>Function</b>	Plays a major role in tight junction-specific obliteration of the intercellular space.
<b>Sequence similarities</b>	Belongs to the claudin family.
<b>Cellular localization</b>	Cell junction > tight junction. Cell membrane.

## Images



**All lanes** : Anti-Claudin 5 (phospho Y217) antibody [EPR10810] (ab172968) at 1/1000 dilution

**Lane 1** : A431 (Human epidermoid carcinoma epithelial cell) whole cell lysate

**Lane 2** : A431 (Human epidermoid carcinoma epithelial cell) treated with 50mM Pervanadate for 5 minutes whole cell lysate

**Lane 3** : A431 (Human epidermoid carcinoma epithelial cell) treated with 50mM Pervanadate for 5 minutes whole cell lysate, the membrane was treated with alkaline phosphatase for 1 hour

Lysates/proteins at 20 µg per lane.

## Secondary

**All lanes** : Goat Anti-Rabbit IgG H&L (HRP) (**ab97051**) at 1/20000 dilution

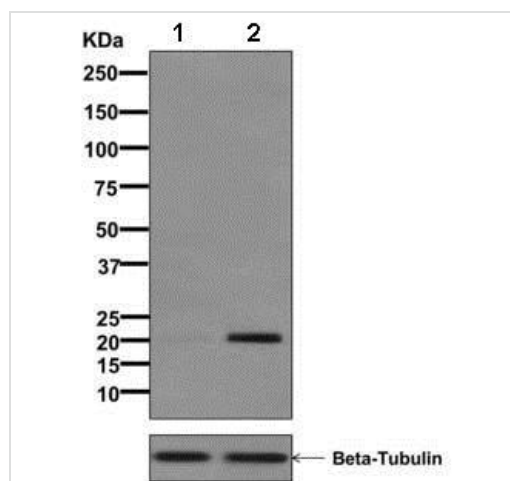
**Predicted band size:** 23 kDa

**Observed band size:** 20 kDa

**Exposure time:** 5 seconds

Blocking and diluting buffer and concentration: 5% NFDM/TBST.

**ab181602** was used as a GAPDH loading control.



Western blot - Anti-Claudin 5 (phospho Y217)  
antibody [EPR10810] (ab172968)

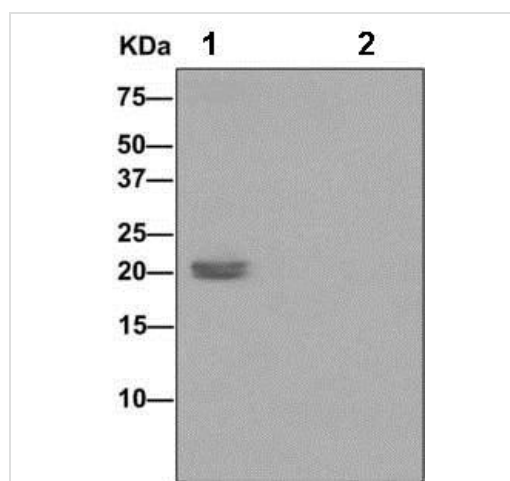
**All lanes :** Anti-Claudin 5 (phospho Y217) antibody [EPR10810]  
(ab172968) at 1/50000 dilution

**Lane 1 :** MCF7 cell lysate, untreated

**Lane 2 :** MCF7 cell lysate, treated with pervanadate

Lysates/proteins at 10 µg per lane.

**Predicted band size:** 23 kDa



Immunoprecipitation - Anti-Claudin 5 (phospho Y217)  
antibody [EPR10810] (ab172968)

Western blot analysis on immunoprecipitation pellet from (1) MCF7 cells treated with pervanadate lysate or (2) 1X PBS (negative control) using ab172968 Phospho (pY217) at 1/10 dilution and HRP-conjugated anti-rabbit IgG preferentially detecting the non-reduced form of rabbit IgG.

### Why choose a recombinant antibody?



**Research with confidence**  
Consistent and reproducible results



**Long-term and scalable supply**  
Recombinant technology



**Success from the first experiment**  
Confirmed specificity



**Ethical standards compliant**  
Animal-free production

Anti-Claudin 5 (phospho Y217) antibody [EPR10810]  
(ab172968)

**Please note:** All products are "FOR RESEARCH USE ONLY. NOT FOR USE IN DIAGNOSTIC PROCEDURES"

### Our Abpromise to you: Quality guaranteed and expert technical support

- Replacement or refund for products not performing as stated on the datasheet
- Valid for 12 months from date of delivery
- Response to your inquiry within 24 hours
- We provide support in Chinese, English, French, German, Japanese and Spanish
- Extensive multi-media technical resources to help you
- We investigate all quality concerns to ensure our products perform to the highest standards

If the product does not perform as described on this datasheet, we will offer a refund or replacement. For full details of the Abpromise, please visit <https://www.abcam.com/abpromise> or contact our technical team.

### Terms and conditions

- Guarantee only valid for products bought direct from Abcam or one of our authorized distributors