

Product datasheet

Anti-Claudin 7/CLDN-7 antibody [EPR18073] α b207300

Recombinant RabMAb

★★★★★ [2 Abreviews](#) [3 References](#) [7 Images](#)

Overview

Product name	Anti-Claudin 7/CLDN-7 antibody [EPR18073]
Description	Rabbit monoclonal [EPR18073] to Claudin 7/CLDN-7
Host species	Rabbit
Tested applications	Suitable for: Flow Cyt (Intra), ICC/IF, IHC-P
Species reactivity	Reacts with: Human
Immunogen	Synthetic peptide. This information is proprietary to Abcam and/or its suppliers.
Positive control	IHC-P; Human renal oncocytoma and Human endometrial cancer tissue. ICC/IF; MCF7 and SW480 cells. Flow Cyt (intra); MCF7 cells.
General notes	<p>This product is a recombinant monoclonal antibody, which offers several advantages including:</p> <ul style="list-style-type: none"> - High batch-to-batch consistency and reproducibility - Improved sensitivity and specificity - Long-term security of supply - Animal-free production <p>For more information see here.</p> <p>Our RabMAb[®] technology is a patented hybridoma-based technology for making rabbit monoclonal antibodies. For details on our patents, please refer to RabMAb[®] patents.</p>

Properties

Form	Liquid
Storage instructions	Shipped at 4°C. Store at +4°C short term (1-2 weeks). Upon delivery aliquot. Store at -20°C long term. Avoid freeze / thaw cycle.
Storage buffer	<p>pH: 7.2</p> <p>Preservative: 0.01% Sodium azide</p> <p>Constituents: 59% PBS, 40% Glycerol, 0.05% BSA</p>
Purity	Protein A purified
Clonality	Monoclonal
Clone number	EPR18073
Isotype	IgG

Applications

The Abpromise guarantee

Our [Abpromise guarantee](#) covers the use of ab207300 in the following tested applications.

The application notes include recommended starting dilutions; optimal dilutions/concentrations should be determined by the end user.

Application	Abreviews	Notes
Flow Cyt (Intra)		1/120.
ICC/IF	★★★★★ (1)	1/250.
IHC-P	★★★★★ (1)	1/1000. Perform heat mediated antigen retrieval with Tris/EDTA buffer pH 9.0 before commencing with IHC staining protocol.

Target

Function

Plays a major role in tight junction-specific obliteration of the intercellular space.

Tissue specificity

Expressed in kidney, lung and prostate. Isoform 1 seems to be predominant, except in some normal prostate samples, where isoform 2 is the major form. Down-regulated in breast cancers, including ductal carcinoma in situ (DCIS), lobular carcinoma in situ (LCIS) and invasive ductal carcinoma (IDC) (at protein level), as well as in several cancer cell lines. Loss of expression correlates with histological grade, occurring predominantly in high-grade lesions.

Sequence similarities

Belongs to the claudin family.

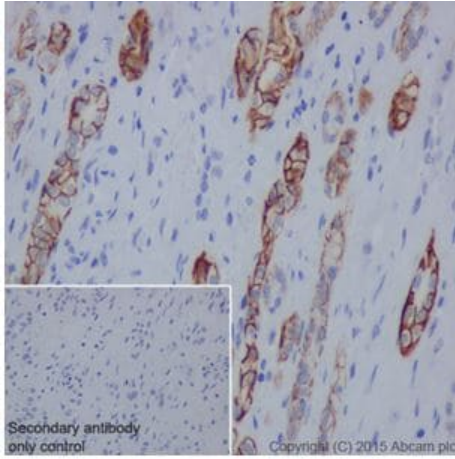
Post-translational modifications

Phosphorylated.

Cellular localization

Cell membrane. Lateral cell membrane. Cell junction > tight junction. Co-localizes with EPCAM at the lateral cell membrane and tight junction.

Images



Immunohistochemistry (Formalin/PFA-fixed paraffin-embedded sections) - Anti-Claudin 7/CLDN-7 antibody [EPR18073] (ab207300)

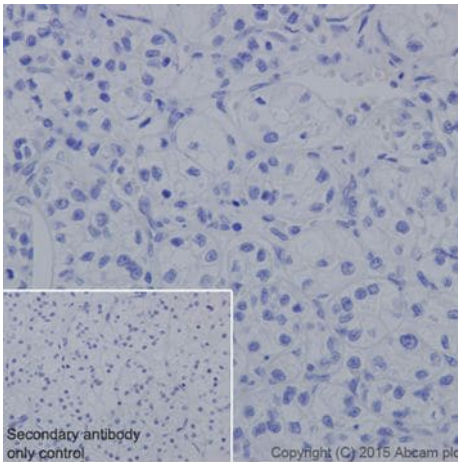
Immunohistochemical analysis of paraffin-embedded human renal oncocytoma tissue labeling Claudin 7/CLDN-7 with ab207300 at 1/1000 dilution followed by Goat Anti-Rabbit IgG H&L (HRP) ([ab97051](#)) at 1/500 dilution.

Membrane staining on human renal oncocytoma tissue is observed.

Counter stained with Hematoxylin.

Negative control: Used PBS instead of primary ab, secondary ab is Goat Anti-Rabbit IgG H&L (HRP) ([ab97051](#)).

Perform heat mediated antigen retrieval with Tris/EDTA buffer pH 9.0 before commencing with IHC staining protocol.



Immunohistochemistry (Formalin/PFA-fixed paraffin-embedded sections) - Anti-Claudin 7/CLDN-7 antibody [EPR18073] (ab207300)

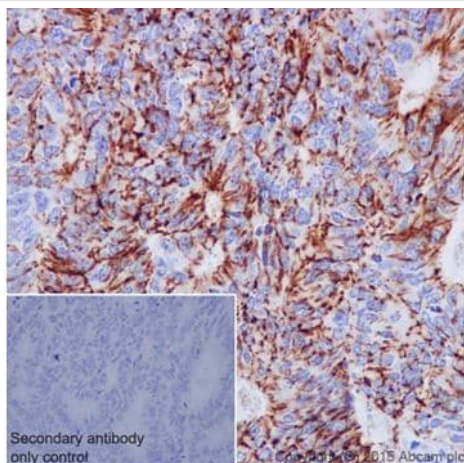
Immunohistochemical analysis of paraffin-embedded human renal clear cell carcinoma tissue labeling Claudin 7/CLDN-7 with ab207300 at 1/1000 dilution followed by Goat Anti-Rabbit IgG H&L (HRP) ([ab97051](#)) at 1/500 dilution.

Negative staining on human renal clear cell carcinoma tissue is observed.

Counter stained with Hematoxylin.

Negative control: Used PBS instead of primary ab, secondary ab is Goat Anti-Rabbit IgG H&L (HRP) ([ab97051](#)).

Perform heat mediated antigen retrieval with Tris/EDTA buffer pH 9.0 before commencing with IHC staining protocol.



Immunohistochemistry (Formalin/PFA-fixed paraffin-embedded sections) - Anti-Claudin 7/CLDN-7 antibody [EPR18073] (ab207300)

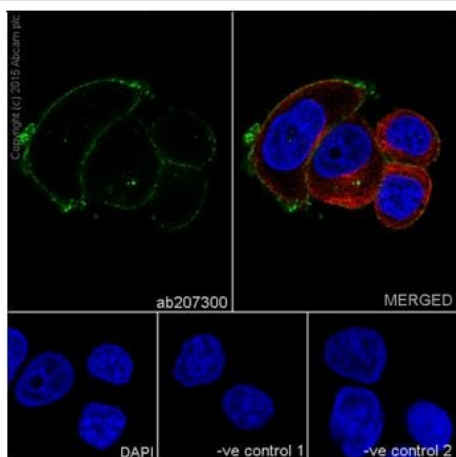
Immunohistochemical analysis of paraffin-embedded Human endometrial cancer tissue labeling Claudin 7/CLDN-7 with ab207300 at 1/1000 dilution followed by Goat Anti-Rabbit IgG H&L (HRP) ([ab97051](#)) at 1/500 dilution.

Membrane staining on human endometrial cancer tissue is observed.

Counter stained with Hematoxylin.

Negative control: Used PBS instead of primary ab, secondary ab is Goat Anti-Rabbit IgG H&L (HRP) ([ab97051](#)).

Perform heat mediated antigen retrieval with Tris/EDTA buffer pH 9.0 before commencing with IHC staining protocol.



Immunocytochemistry/ Immunofluorescence - Anti-Claudin 7/CLDN-7 antibody [EPR18073] (ab207300)

Immunofluorescent analysis of 4% paraformaldehyde-fixed, 0.1% Triton X-100 permeabilized MCF7 (Human breast adenocarcinoma cell line) cells labeling Claudin 7/CLDN-7 with ab207300 at 1/250 dilution, followed by Goat anti-rabbit IgG (Alexa Fluor® 488) ([ab150077](#)) secondary antibody at 1/1000 dilution (green).

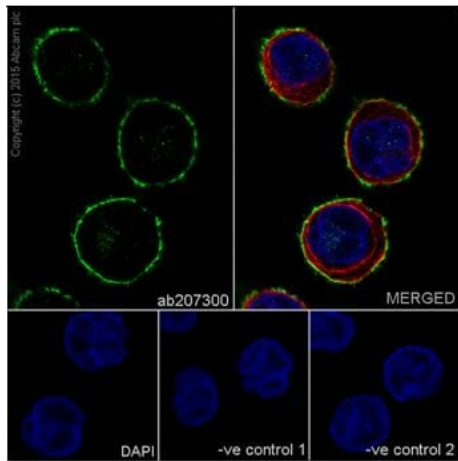
Membranous staining on MCF7 cell line is observed.

The nuclear counterstain is DAPI (blue). Tubulin is detected with [ab7291](#) (anti-Tubulin mouse mAb) at 1/1000 dilution and [ab150120](#) (AlexaFluor®594 Goat anti-Mouse secondary) at 1/1000 dilution (red).

The negative controls are as follows:-

-ve control 1 - ab207300 at 1/250 dilution followed by ab150120 (AlexaFluor®594 Goat anti-Mouse secondary) at 1/1000 dilution.

-ve control 2. - [ab7291](#) (anti-Tubulin mouse mAb) at 1/1000 dilution followed by [ab150077](#) (Alexa Fluor®488 Goat Anti-Rabbit IgG H&L) at 1/1000 dilution.



Immunocytochemistry/ Immunofluorescence - Anti-Claudin 7/CLDN-7 antibody [EPR18073] (ab207300)

Immunofluorescent analysis of 4% paraformaldehyde-fixed, 0.1% Triton X-100 permeabilized SW480 (Human colorectal adenocarcinoma cell line) cells labeling Claudin 7/CLDN-7 with ab207300 at 1/250 dilution, followed by Goat anti-rabbit IgG (Alexa Fluor® 488) (**ab150077**) secondary antibody at 1/1000 dilution (green).

Membranous staining on SW480 cell line is observed.

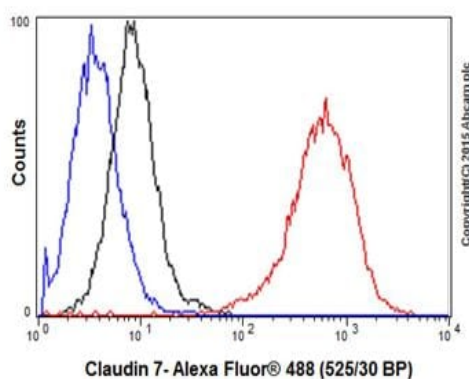
The nuclear counterstain is DAPI (blue).

Tubulin is detected with **ab7291** (anti-Tubulin mouse mAb) at 1/1000 dilution and **ab150120** (AlexaFluor®594 Goat anti-Mouse secondary) at 1/1000 dilution (red).

The negative controls are as follows:-

-ve control 1 - ab207300 at 1/250 dilution followed by ab150120 (AlexaFluor®594 Goat anti-Mouse secondary) at 1/1000 dilution.

-ve control 2. - **ab7291** (anti-Tubulin mouse mAb) at 1/1000 dilution followed by **ab150077** (Alexa Fluor®488 Goat Anti-Rabbit IgG H&L) at 1/1000 dilution.



Flow Cytometry (Intracellular) - Anti-Claudin 7/CLDN-7 antibody [EPR18073] (ab207300)

Intracellular Flow Cytometry analysis of MCF-7 (human breast carcinoma) labeling Claudin 7 with ab207300 at 1/120 dilution (0.5ug) (red). Cells were fixed with 4% paraformaldehyde and permeabilised with 0.1% Tween® 20. Goat anti rabbit IgG (Alexa Fluor®488) at 1/500 dilution was used as a secondary antibody. Isotype control - Rabbit monoclonal IgG (**ab172730**) (black).

Unlabeled control - cell without incubation with primary antibody and secondary antibody (blue).

Why choose a recombinant antibody?



Research with confidence
Consistent and reproducible results



Long-term and scalable supply
Recombinant technology



Success from the first experiment
Confirmed specificity



Ethical standards compliant
Animal-free production

Anti-Claudin 7/CLDN-7 antibody [EPR18073]
(ab207300)

Please note: All products are "FOR RESEARCH USE ONLY. NOT FOR USE IN DIAGNOSTIC PROCEDURES"

Our Abpromise to you: Quality guaranteed and expert technical support

- Replacement or refund for products not performing as stated on the datasheet
- Valid for 12 months from date of delivery
- Response to your inquiry within 24 hours
- We provide support in Chinese, English, French, German, Japanese and Spanish
- Extensive multi-media technical resources to help you
- We investigate all quality concerns to ensure our products perform to the highest standards

If the product does not perform as described on this datasheet, we will offer a refund or replacement. For full details of the Abpromise, please visit <https://www.abcam.com/abpromise> or contact our technical team.

Terms and conditions

- Guarantee only valid for products bought direct from Abcam or one of our authorized distributors