


Product datasheet

Anti-Claudin 8 antibody [EPR12680(2)] ab183738

Recombinant RabMAb

[7 References](#) [3 Images](#)

Overview

Product name	Anti-Claudin 8 antibody [EPR12680(2)]
Description	Rabbit monoclonal [EPR12680(2)] to Claudin 8
Host species	Rabbit
Tested applications	Suitable for: IHC-P
Species reactivity	Reacts with: Human Predicted to work with: Mouse, Rat 
Immunogen	Synthetic peptide. This information is proprietary to Abcam and/or its suppliers.
Positive control	Human colon and Human colonic adenocarcinoma tissue.
General notes	<p>This product is a recombinant monoclonal antibody, which offers several advantages including:</p> <ul style="list-style-type: none"> - High batch-to-batch consistency and reproducibility - Improved sensitivity and specificity - Long-term security of supply - Animal-free production <p>For more information see here.</p> <p>Our RabMAb[®] technology is a patented hybridoma-based technology for making rabbit monoclonal antibodies. For details on our patents, please refer to RabMAb[®] patents.</p>

Properties

Form	Liquid
Storage instructions	Shipped at 4°C. Store at +4°C short term (1-2 weeks). Upon delivery aliquot. Store at -20°C long term. Avoid freeze / thaw cycle.
Storage buffer	pH: 7.2 Preservative: 0.01% Sodium azide Constituents: 59% PBS, 40% Glycerol, 0.05% BSA
Purity	Protein A purified
Clonality	Monoclonal
Clone number	EPR12680(2)
Isotype	IgG

Applications

The Abpromise guarantee

Our **Abpromise guarantee** covers the use of ab183738 in the following tested applications.

The application notes include recommended starting dilutions; optimal dilutions/concentrations should be determined by the end user.

Application	Abreviews	Notes
IHC-P		1/500 - 1/1000. Perform heat mediated antigen retrieval with Tris/EDTA buffer pH 9.0 before commencing with IHC staining protocol.

Target

Function

Plays a major role in tight junction-specific obliteration of the intercellular space.

Tissue specificity

Expressed in the epididymis, mainly in the caput segment.

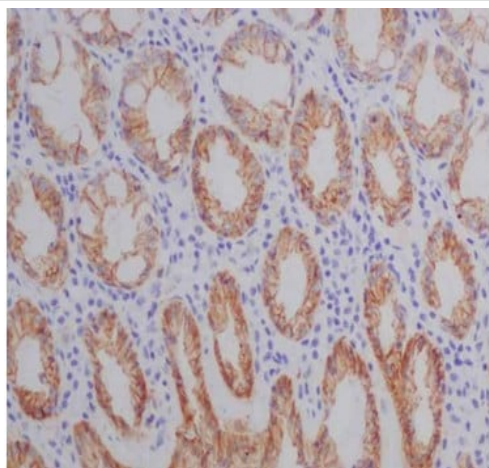
Sequence similarities

Belongs to the claudin family.

Cellular localization

Cell junction > tight junction. Cell membrane. Localizes to tight junctions in all 3 segments of the epididymis, in the caput found in the lateral margins of principal cells, and in the corpus at the interface between basal and principal cells.

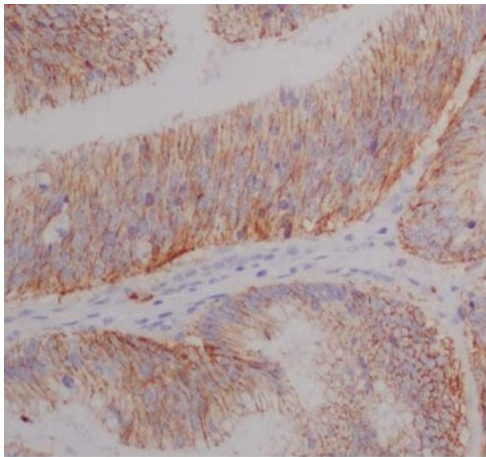
Images



Immunohistochemical analysis of paraffin-embedded Human colon tissue labeling Claudin 8 with ab183738 at 1/1000 dilution. Counter stain Hematoxylin.

Perform heat mediated antigen retrieval with EDTA buffer pH 9 before commencing with IHC staining protocol.

Immunohistochemistry (Formalin/PFA-fixed paraffin-embedded sections) - Anti-Claudin 8 antibody [EPR12680(2)] (ab183738)



Immunohistochemical analysis of paraffin-embedded Human colonic adenocarcinoma tissue labeling Claudin 8 with ab183738 at 1/1000 dilution. Counter stain Hematoxylin.

Perform heat mediated antigen retrieval with EDTA buffer pH 9 before commencing with IHC staining protocol.

Immunohistochemistry (Formalin/PFA-fixed paraffin-embedded sections) - Anti-Claudin 8 antibody [EPR12680(2)] (ab183738)

Why choose a recombinant antibody?



Anti-Claudin 8 antibody [EPR12680(2)] (ab183738)

Please note: All products are "FOR RESEARCH USE ONLY. NOT FOR USE IN DIAGNOSTIC PROCEDURES"

Our Abpromise to you: Quality guaranteed and expert technical support

- Replacement or refund for products not performing as stated on the datasheet
- Valid for 12 months from date of delivery
- Response to your inquiry within 24 hours
- We provide support in Chinese, English, French, German, Japanese and Spanish

- Extensive multi-media technical resources to help you
- We investigate all quality concerns to ensure our products perform to the highest standards

If the product does not perform as described on this datasheet, we will offer a refund or replacement. For full details of the Abpromise, please visit <https://www.abcam.com/abpromise> or contact our technical team.

Terms and conditions

- Guarantee only valid for products bought direct from Abcam or one of our authorized distributors