



## Product datasheet

### Anti-Claudin 9 antibody ab192398

★★★★★ [1 Abreviews](#) [3 References](#) [1 Image](#)

#### Overview

<b>Product name</b>	Anti-Claudin 9 antibody
<b>Description</b>	Rabbit polyclonal to Claudin 9
<b>Host species</b>	Rabbit
<b>Tested applications</b>	<b>Suitable for:</b> WB
<b>Species reactivity</b>	<b>Reacts with:</b> Mouse, Rat, Human
<b>Immunogen</b>	Synthetic peptide corresponding to Human Claudin 9 aa 150 to the C-terminus (C terminal). Database link: <a href="#">O95484</a>
	 <a href="#">Run BLAST with</a>  <a href="#">Run BLAST with</a>
<b>Positive control</b>	WB: A549, mouse RAW 264.7 and rat PC12 whole cell lysates.
<b>General notes</b>	<p>The Life Science industry has been in the grips of a reproducibility crisis for a number of years. Abcam is leading the way in addressing this with our range of recombinant monoclonal antibodies and knockout edited cell lines for gold-standard validation. Please check that this product meets your needs before purchasing.</p> <p>If you have any questions, special requirements or concerns, please send us an inquiry and/or contact our Support team ahead of purchase. Recommended alternatives for this product can be found below, along with publications, customer reviews and Q&amp;As</p>

#### Properties

<b>Form</b>	Liquid
<b>Storage instructions</b>	Shipped at 4°C. Store at +4°C short term (1-2 weeks). Upon delivery aliquot. Store at -20°C long term. Avoid freeze / thaw cycle.
<b>Storage buffer</b>	Preservative: 0.1% Sodium azide Constituents: 50% Glycerol, 49% PBS
<b>Purity</b>	Immunogen affinity purified
<b>Purification notes</b>	ab192398 was affinity-purified from rabbit antiserum by affinity-chromatography using epitope-specific immunogen and the purity is > 95% (by SDS-PAGE).
<b>Clonality</b>	Polyclonal
<b>Isotype</b>	IgG

## Applications

### The Abpromise guarantee

Our **Abpromise guarantee** covers the use of ab192398 in the following tested applications.

The application notes include recommended starting dilutions; optimal dilutions/concentrations should be determined by the end user.

Application	Abreviews	Notes
WB		1/500. Predicted molecular weight: 23 kDa.

## Target

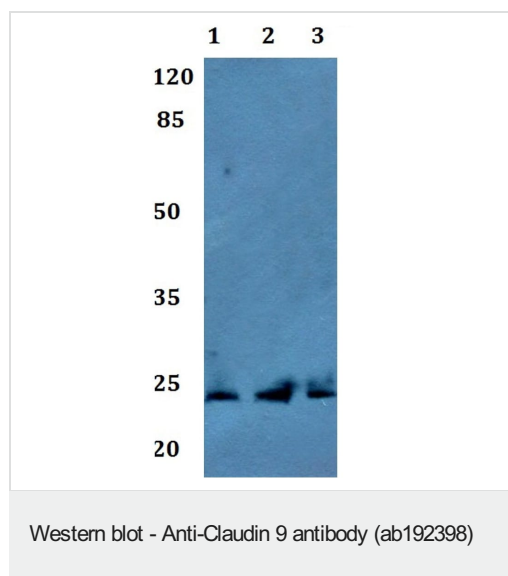
### Relevance

Claudin 9 is a member of the claudin family. It is a four-transmembrane protein with WWCC motif and plays a major role in tight junction-specific obliteration of the intercellular space, through calcium-independent cell-adhesion activity.

### Cellular localization

Cell Membrane (tight junctions)

## Images



**All lanes :** Anti-Claudin 9 antibody (ab192398) at 1/500 dilution

**Lane 1 :** A549 (human lung carcinoma cell line) whole cell lysate

**Lane 2 :** RAW 264.7 (mouse macrophage cell line transformed with Abelson murine leukemia virus) whole cell lysate

**Lane 3 :** PC-12 (rat adrenal gland pheochromocytoma cell line) whole cell lysate

**Predicted band size:** 23 kDa

**Please note:** All products are "FOR RESEARCH USE ONLY. NOT FOR USE IN DIAGNOSTIC PROCEDURES"

## Our Abpromise to you: Quality guaranteed and expert technical support

- Replacement or refund for products not performing as stated on the datasheet
- Valid for 12 months from date of delivery
- Response to your inquiry within 24 hours
- We provide support in Chinese, English, French, German, Japanese and Spanish
- Extensive multi-media technical resources to help you
- We investigate all quality concerns to ensure our products perform to the highest standards

If the product does not perform as described on this datasheet, we will offer a refund or replacement. For full details of the Abpromise,

please visit <https://www.abcam.com/abpromise> or contact our technical team.

#### **Terms and conditions**

---

- Guarantee only valid for products bought direct from Abcam or one of our authorized distributors