



Product datasheet

Anti-Claudin18 antibody [34H14L15] ab203563

Recombinant

★★★★★ [2 Abreviews](#) [5 References](#) [6 Images](#)

Overview

Product name	Anti-Claudin18 antibody [34H14L15]
Description	Rabbit monoclonal [34H14L15] to Claudin18
Host species	Rabbit
Tested applications	Suitable for: ICC, ICC/IF, WB, IHC-P
Species reactivity	Reacts with: Mouse, Rat, Human
Immunogen	Synthetic peptide corresponding to Human Claudin18 aa 200 to the C-terminus. Database link: P56856
	 Run BLAST with  Run BLAST with
Positive control	WB: Mouse lung lysate. Rat heart lysate. A431 and A549 lysates. IHC-P: Human stomach and squamous lung carcinoma tissues. ICC/IF: Caco-2 cells.

Properties

Form	Liquid
Storage instructions	Shipped at 4°C. Store at +4°C short term (1-2 weeks). Upon delivery aliquot. Store at -20°C long term. Avoid freeze / thaw cycle.
Storage buffer	Preservative: 0.09% Sodium azide Constituent: PBS
Purity	Protein A purified
Clonality	Monoclonal
Clone number	34H14L15
Isotype	IgG

Applications

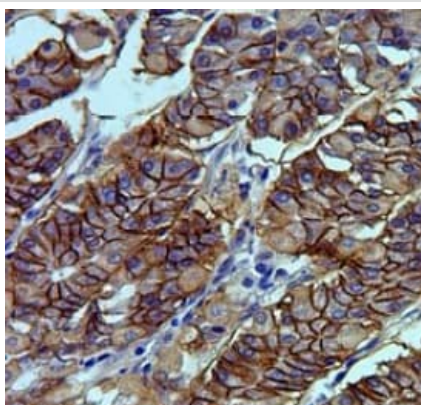
The Abpromise guarantee Our **Abpromise guarantee** covers the use of ab203563 in the following tested applications.
The application notes include recommended starting dilutions; optimal dilutions/concentrations should be determined by the end user.

Application	Abreviews	Notes
ICC		1/100 - 1/1000.
ICC/IF	★★★★★ (1)	Use at an assay dependent concentration.
WB		Use a concentration of 2 - 3 µg/ml. Predicted molecular weight: 28 kDa.
IHC-P	★★★★★ (1)	Use a concentration of 2 - 4 µg/ml.

Target

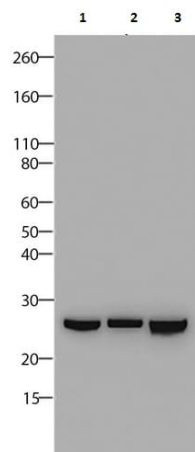
Function	Plays a major role in tight junction-specific obliteration of the intercellular space, through calcium-independent cell-adhesion activity.
Tissue specificity	Concentrated at the cell-cell borders of epithelial cells.
Sequence similarities	Belongs to the claudin family.
Cellular localization	Cell junction > tight junction. Cell membrane.

Images



Formalin-fixed, paraffin-embedded human stomach tissue stained for Claudin18 with ab203563 at 2 µg/ml in immunohistochemical analysis. DAB staining.

Immunohistochemistry (Formalin/PFA-fixed paraffin-embedded sections) - Anti-Claudin18 antibody [34H14L15] (ab203563)



Western blot - Anti-Claudin18 antibody [34H14L15] (ab203563)

All lanes : Anti-Claudin18 antibody [34H14L15] (ab203563) at 1/1000 dilution

Lane 1 : Rat heart lysate

Lane 2 : A431 (Human epidermoid carcinoma cell line) cell lysate

Lane 3 : A549 (Human lung carcinoma cell line) cell lysate

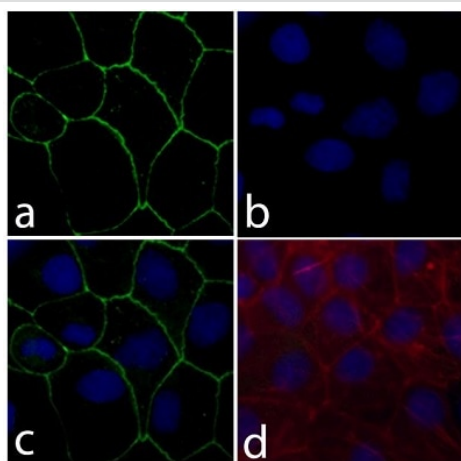
Lysates/proteins at 30 µg per lane.

Secondary

All lanes : Goat anti-Rabbit HRP at 1/5000 dilution

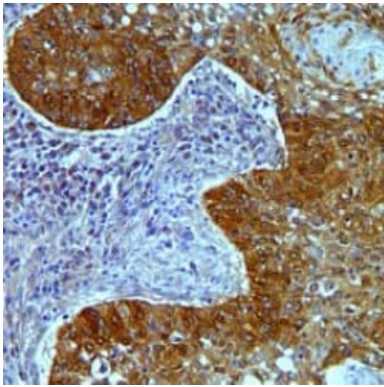
Predicted band size: 28 kDa

4-12% Bis-Tris gel



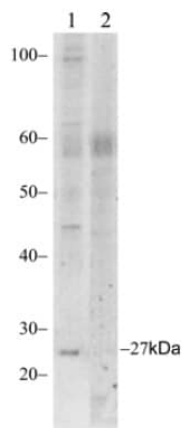
Immunocytochemistry - Anti-Claudin18 antibody [34H14L15] (ab203563)

Immunofluorescent analysis of Caco-2 (Human colorectal adenocarcinoma cell line) cells (4% paraformaldehyde-fixed) labeling Claudin18 with ab203563 at 1/500 dilution followed with an Alexa Fluor® 488 goat anti-rabbit IgG secondary antibody at 1/400 dilution (Panel a: green). Nuclei (Panel b: blue) were stained with DAPI. Panel c is a merged image showing cell junction localization and panel d is a control without primary antibody.



Formalin-fixed, paraffin-embedded human squamous lung carcinoma tissue stained for Claudin18 with ab203563 at 2 µg/ml in immunohistochemical analysis. DAB staining.

Immunohistochemistry (Formalin/PFA-fixed paraffin-embedded sections) - Anti-Claudin18 antibody [34H14L15] (ab203563)



All lanes : Anti-Claudin18 antibody [34H14L15] (ab203563) at 2 µg/ml

Lane 1 : Mouse lung lysate

Lane 2 : Mouse lung lysate with immunizing peptide

Predicted band size: 28 kDa

Western blot - Anti-Claudin18 antibody [34H14L15] (ab203563)

Why choose a recombinant antibody?



Research with confidence
Consistent and reproducible results



Long-term and scalable supply
Recombinant technology



Success from the first experiment
Confirmed specificity



Ethical standards compliant
Animal-free production

Anti-Claudin18 antibody [34H14L15] (ab203563)

Please note: All products are "FOR RESEARCH USE ONLY. NOT FOR USE IN DIAGNOSTIC PROCEDURES"

Our Abpromise to you: Quality guaranteed and expert technical support

- Replacement or refund for products not performing as stated on the datasheet
- Valid for 12 months from date of delivery
- Response to your inquiry within 24 hours
- We provide support in Chinese, English, French, German, Japanese and Spanish
- Extensive multi-media technical resources to help you
- We investigate all quality concerns to ensure our products perform to the highest standards

If the product does not perform as described on this datasheet, we will offer a refund or replacement. For full details of the Abpromise, please visit <https://www.abcam.com/abpromise> or contact our technical team.

Terms and conditions

- Guarantee only valid for products bought direct from Abcam or one of our authorized distributors