

Product datasheet

Anti-CLCA1 antibody [EPR12254] ab174319

Recombinant RabMAb

★★★★☆ **1 Abreviews** [4 Images](#)

Overview

Product name	Anti-CLCA1 antibody [EPR12254]
Description	Rabbit monoclonal [EPR12254] to CLCA1
Host species	Rabbit
Tested applications	Suitable for: IHC-P, WB, IP Unsuitable for: ICC/IF
Species reactivity	Reacts with: Human Does not react with: Mouse, Rat
Immunogen	Recombinant fragment corresponding to Human CLCA1. Database link: A8K7I4
Positive control	Human colon cancer and Human small intestine lysates; Human colon tissue.
General notes	This product is a recombinant monoclonal antibody, which offers several advantages including: <ul style="list-style-type: none">- High batch-to-batch consistency and reproducibility- Improved sensitivity and specificity- Long-term security of supply- Animal-free production For more information see here . Our RabMAb [®] technology is a patented hybridoma-based technology for making rabbit monoclonal antibodies. For details on our patents, please refer to RabMAb[®] patents .

Properties

Form	Liquid
Storage instructions	Shipped at 4°C. Store at +4°C short term (1-2 weeks). Upon delivery aliquot. Store at -20°C long term. Avoid freeze / thaw cycle.
Storage buffer	pH: 7.20 Preservative: 0.01% Sodium azide Constituents: 9% PBS, 40% Glycerol (glycerin, glycerine), 0.05% BSA, 50% Tissue culture supernatant
Purity	Protein A purified
Clonality	Monoclonal

Clone number EPR12254
Isotype IgG

Applications

The Abpromise guarantee Our **Abpromise guarantee** covers the use of ab174319 in the following tested applications. The application notes include recommended starting dilutions; optimal dilutions/concentrations should be determined by the end user.

Application	Abreviews	Notes
IHC-P	★★★★★ (1)	1/250 - 1/500. Perform heat mediated antigen retrieval before commencing with IHC staining protocol.
WB		1/10000 - 1/50000. Detects a band of approximately 90 kDa (predicted molecular weight: 100 kDa).
IP		1/10 - 1/100.

Application notes Is unsuitable for ICC/IF.

Target

Function May be involved in mediating calcium-activated chloride conductance. May play critical roles in goblet cell metaplasia, mucus hypersecretion, cystic fibrosis and AHR. May be involved in the regulation of mucus production and/or secretion by goblet cells. Involved in the regulation of tissue inflammation in the innate immune response. May play a role as a tumor suppressor. Induces MUC5AC.

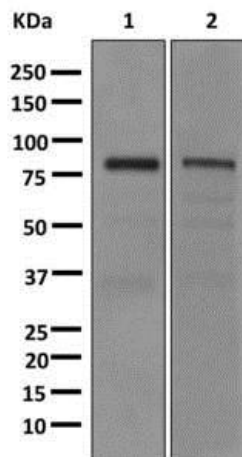
Tissue specificity Highly expressed in small intestine and colon namely in intestinal basal crypt epithelia and goblet cells, and appendix. Weakly expressed in uterus, testis and kidney. Expressed in the airways epithelium of both asthmatic and healthy patients. Expressed in the bronchial epithelium, especially in mucus-producing goblet cells. Expressed in normal turbinate mucosa and nasal polyp. Expressed in.

Sequence similarities Belongs to the CLCR family.
Contains 1 VWFA domain.

Post-translational modifications Glycosylated.
The 125-kDa product is processed and yields to two cell-surface-associated subunits, a 90-kDa protein and a group of 37-to 41-kDa proteins.

Cellular localization Secreted > extracellular space. Cell membrane. Protein that remains attached to the plasma membrane appeared to be predominantly localized to microvilli.

Images



Western blot - Anti-CLCA1 antibody [EPR12254] (ab174319)

All lanes : Anti-CLCA1 antibody [EPR12254] (ab174319) at 1/10000 dilution

Lane 1 : Human colon cancer lysate

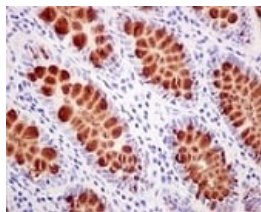
Lane 2 : Human small intestine lysate

Lysates/proteins at 10 µg per lane.

Secondary

All lanes : Goat anti-rabbit HRP at 1/2000 dilution

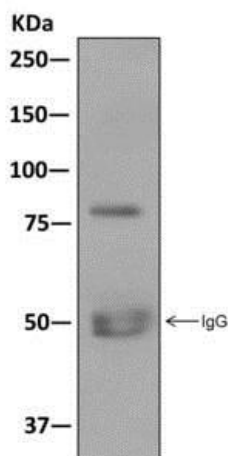
Predicted band size: 100 kDa



Immunohistochemistry (Formalin/PFA-fixed paraffin-embedded sections) - Anti-CLCA1 antibody [EPR12254] (ab174319)

Immunohistochemical analysis of paraffin-embedded Human colon tissue labeling CLCA1 with ab174319 at 1/100 dilution.





Perform heat mediated antigen retrieval before commencing with IHC staining protocol.



Immunoprecipitation - Anti-CLCA1 antibody [EPR12254] (ab174319)

Western blot analysis on immunoprecipitation pellet from Human colon cancer lysate using ab174319 at 1/10 dilution.

Why choose a recombinant antibody?

 <p>Research with confidence Consistent and reproducible results</p>	 <p>Long-term and scalable supply Recombinant technology</p>
 <p>Success from the first experiment Confirmed specificity</p>	 <p>Ethical standards compliant Animal-free production</p>

Anti-CLCA1 antibody [EPR12254] (ab174319)

Please note: All products are "FOR RESEARCH USE ONLY. NOT FOR USE IN DIAGNOSTIC PROCEDURES"

Our Abpromise to you: Quality guaranteed and expert technical support

- Replacement or refund for products not performing as stated on the datasheet
- Valid for 12 months from date of delivery
- Response to your inquiry within 24 hours
- We provide support in Chinese, English, French, German, Japanese and Spanish
- Extensive multi-media technical resources to help you
- We investigate all quality concerns to ensure our products perform to the highest standards

If the product does not perform as described on this datasheet, we will offer a refund or replacement. For full details of the Abpromise, please visit <https://www.abcam.com/abpromise> or contact our technical team.

Terms and conditions

- Guarantee only valid for products bought direct from Abcam or one of our authorized distributors