


Product datasheet

Anti-CLIC2 antibody [EPR6495] **ab126727**

Recombinant **RabMAb**

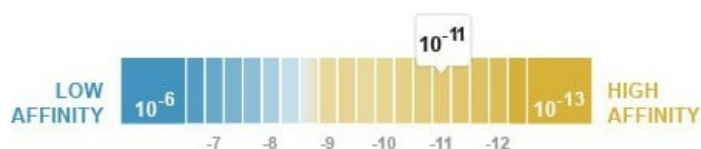
3 Images

Overview

Product name	Anti-CLIC2 antibody [EPR6495]
Description	Rabbit monoclonal [EPR6495] to CLIC2
Host species	Rabbit
Tested applications	Suitable for: WB Unsuitable for: IHC-P or IP
Species reactivity	Reacts with: Human Predicted to work with: Rat 
Immunogen	Synthetic peptide. This information is proprietary to Abcam and/or its suppliers.
Positive control	Human fetal liver, Human heart, and Human testis lysates.
General notes	<p>This product is a recombinant monoclonal antibody, which offers several advantages including:</p> <ul style="list-style-type: none"> - High batch-to-batch consistency and reproducibility - Improved sensitivity and specificity - Long-term security of supply - Animal-free production <p>For more information see here.</p> <p>Our RabMAb[®] technology is a patented hybridoma-based technology for making rabbit monoclonal antibodies. For details on our patents, please refer to RabMAb[®] patents.</p> <p>Mouse: We have preliminary internal testing data to indicate this antibody may not react with this species. Please contact us for more information.</p>

Properties

Form	Liquid
Storage instructions	Shipped at 4°C. Store at -20°C. Stable for 12 months at -20°C.
Dissociation constant (K_D)	K _D = 3.10 x 10 ⁻¹¹ M



[Learn more about K_D](#)

Storage buffer	pH: 7.20 Preservative: 0.01% Sodium azide Constituents: 9% PBS, 40% Glycerol (glycerin, glycerine), 0.05% BSA, 50% Tissue culture supernatant
Purity	Protein A purified
Clonality	Monoclonal
Clone number	EPR6495
Isotype	IgG

Applications

The Abpromise guarantee Our **Abpromise guarantee** covers the use of ab126727 in the following tested applications. The application notes include recommended starting dilutions; optimal dilutions/concentrations should be determined by the end user.

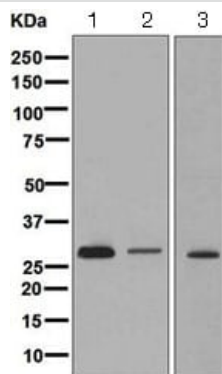
Application	Abreviews	Notes
WB		1/1000 - 1/10000. Detects a band of approximately 28 kDa (predicted molecular weight: 28 kDa).

Application notes Is unsuitable for IHC-P or IP.

Target

Function	Can insert into membranes and form chloride ion channels. Channel activity depends on the pH. Membrane insertion seems to be redox-regulated and may occur only under oxydizing conditions. Modulates the activity of RYR2 and inhibits calcium influx.
Tissue specificity	Detected in adult brain, heart, liver, lung, spleen, stomach and testis. Expressed in fetal liver and adult skeletal muscle.
Sequence similarities	Belongs to the chloride channel CLIC family. Contains 1 GST C-terminal domain.
Domain	Members of this family may change from a globular, soluble state to a state where the N-terminal domain is inserted into the membrane and functions as chloride channel. A conformation change of the N-terminal domain is thought to expose hydrophobic surfaces that trigger membrane insertion.
Cellular localization	Cytoplasm. Membrane. Exists both as soluble cytoplasmic protein and as membrane protein with probably a single transmembrane domain.

Images



Western blot - Anti-CLIC2 antibody [EPR6495]
(ab126727)

All lanes : Anti-CLIC2 antibody [EPR6495] (ab126727) at 1/1000 dilution

Lane 1 : Human fetal liver lysate

Lane 2 : Human heart lysate

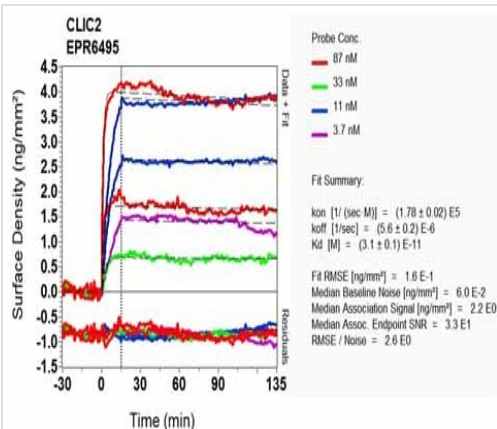
Lane 3 : Human testis lysate

Lysates/proteins at 10 µg per lane.

Secondary

All lanes : HRP labelled goat anti-rabbit at 1/2000 dilution

Predicted band size: 28 kDa



SPR Scanning - Anti-CLIC2 antibody [EPR6495]
(ab126727)

Equilibrium dissociation constant (K_D)

Learn more about K_D

[Click here to learn more about \$K_D\$](#)

Why choose a recombinant antibody?



Research with confidence
Consistent and reproducible results



Long-term and scalable supply
Recombinant technology



Success from the first experiment
Confirmed specificity



Ethical standards compliant
Animal-free production

Anti-CLIC2 antibody [EPR6495] (ab126727)

Please note: All products are "FOR RESEARCH USE ONLY. NOT FOR USE IN DIAGNOSTIC PROCEDURES"

Our Abpromise to you: Quality guaranteed and expert technical support

- Replacement or refund for products not performing as stated on the datasheet
- Valid for 12 months from date of delivery
- Response to your inquiry within 24 hours
- We provide support in Chinese, English, French, German, Japanese and Spanish
- Extensive multi-media technical resources to help you
- We investigate all quality concerns to ensure our products perform to the highest standards

If the product does not perform as described on this datasheet, we will offer a refund or replacement. For full details of the Abpromise, please visit <https://www.abcam.com/abpromise> or contact our technical team.

Terms and conditions

- Guarantee only valid for products bought direct from Abcam or one of our authorized distributors