


Product datasheet

Anti-CLIC4 antibody [EPR14253] α b183043

Recombinant RabMAb

[3 References](#) [7 Images](#)

Overview

Product name	Anti-CLIC4 antibody [EPR14253]
Description	Rabbit monoclonal [EPR14253] to CLIC4
Host species	Rabbit
Tested applications	Suitable for: Flow Cyt (Intra), WB, IHC-P, ICC/IF, IP
Species reactivity	Reacts with: Human Predicted to work with: Mouse, Rat 
Immunogen	Synthetic peptide. This information is proprietary to Abcam and/or its suppliers.
Positive control	HeLa, 293, Raji and HepG2 lysates; Human melanoma tissue; HeLa, HepG2 and Raji cells.
General notes	<p>This product is a recombinant monoclonal antibody, which offers several advantages including:</p> <ul style="list-style-type: none"> - High batch-to-batch consistency and reproducibility - Improved sensitivity and specificity - Long-term security of supply - Animal-free production <p>For more information see here.</p> <p>Our RabMAb[®] technology is a patented hybridoma-based technology for making rabbit monoclonal antibodies. For details on our patents, please refer to RabMAb[®] patents.</p>

Properties

Form	Liquid
Storage instructions	Shipped at 4°C. Store at +4°C short term (1-2 weeks). Upon delivery aliquot. Store at -20°C long term. Avoid freeze / thaw cycle.
Storage buffer	pH: 7.2 Preservative: 0.01% Sodium azide Constituents: 59% PBS, 40% Glycerol (glycerin, glycerine), 0.05% BSA
Purity	Protein A purified
Clonality	Monoclonal
Clone number	EPR14253
Isotype	IgG

Applications

The Abpromise guarantee

Our **Abpromise guarantee** covers the use of ab183043 in the following tested applications.

The application notes include recommended starting dilutions; optimal dilutions/concentrations should be determined by the end user.

Application	Abreviews	Notes
Flow Cyt (Intra)		1/90. ab172730 - Rabbit monoclonal IgG, is suitable for use as an isotype control with this antibody.
WB		1/10000 - 1/50000. Detects a band of approximately 29 kDa (predicted molecular weight: 29 kDa).
IHC-P		1/50 - 1/100. Perform heat mediated antigen retrieval with Tris/EDTA buffer pH 9.0 before commencing with IHC staining protocol.
ICC/IF		1/500.
IP		1/30 - 1/50.

Target

Function

Can insert into membranes and form poorly selective ion channels that may also transport chloride ions. Channel activity depends on the pH. Membrane insertion seems to be redox-regulated and may occur only under oxydizing conditions. Promotes cell-surface expression of HRH3. Has alternate cellular functions like a potential role in angiogenesis or in maintaining apical-basolateral membrane polarity during mitosis and cytokinesis. Could also promote endothelial cell proliferation and regulate endothelial morphogenesis (tubulogenesis).

Tissue specificity

Detected in epithelial cells from colon, esophagus and kidney (at protein level). Expression is prominent in heart, kidney, placenta and skeletal muscle.

Sequence similarities

Belongs to the chloride channel CLIC family.
Contains 1 GST C-terminal domain.

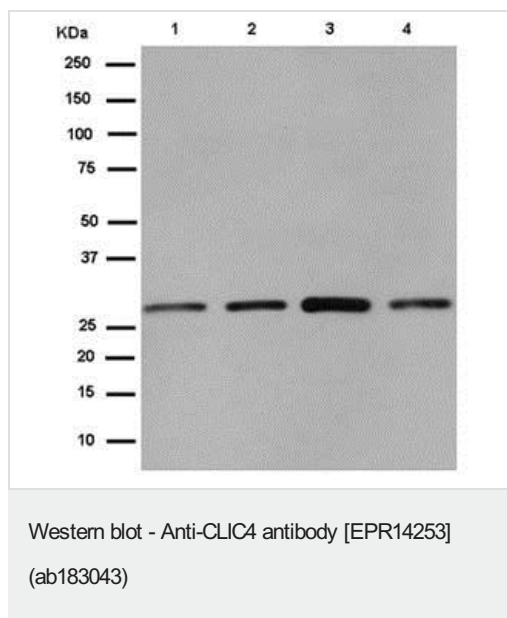
Domain

Members of this family may change from a globular, soluble state to a state where the N-terminal domain is inserted into the membrane and functions as chloride channel. A conformation change of the N-terminal domain is thought to expose hydrophobic surfaces that trigger membrane insertion.

Cellular localization

Cytoplasm, cytoskeleton, microtubule organizing center, centrosome. Cytoplasmic vesicle membrane. Nucleus matrix. Cell membrane. Mitochondrion. Cell junction. Colocalized with AKAP9 at the centrosome and midbody. Exists both as soluble cytoplasmic protein and as membrane protein with probably a single transmembrane domain. Present in an intracellular vesicular compartment that likely represent trans-Golgi network vesicles.

Images



All lanes : Anti-CLIC4 antibody [EPR14253] (ab183043) at 1/10000 dilution

Lane 1 : HeLa lysate

Lane 2 : 293 lysate

Lane 3 : Raji lysate

Lane 4 : HepG2 lysate

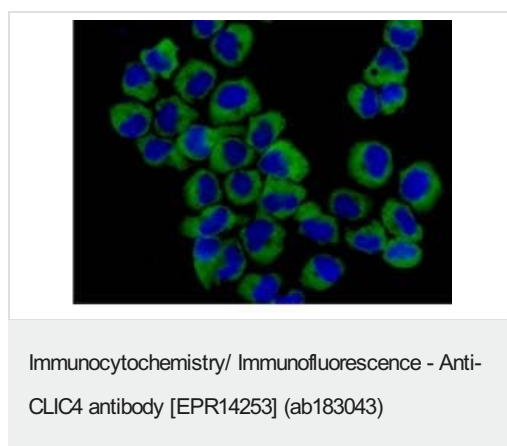
Lysates/proteins at 20 µg per lane.

Secondary

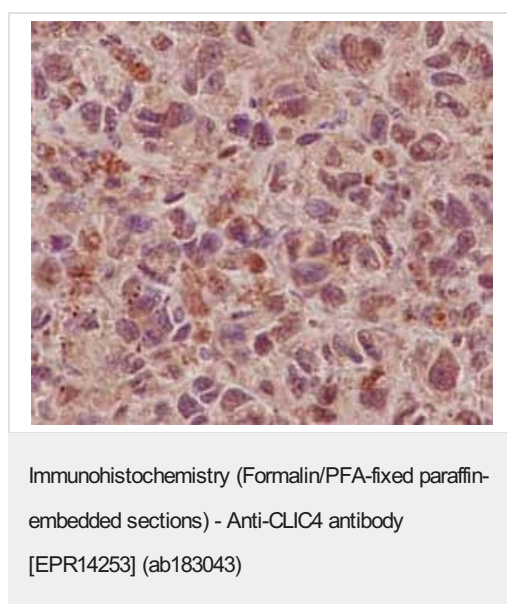
All lanes : Goat Anti-Rabbit IgG, (H+L), Peroxidase conjugated at 1/1000 dilution

Developed using the ECL technique.

Predicted band size: 29 kDa

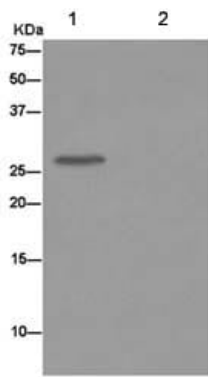


Immunofluorescence analysis of HeLa cells (-20°C Acetone-fixed) labeling CLIC4 with ab183043 at 1/500 dilution followed by Goat anti rabbit IgG (AlexaFluor® 488) secondary at 1/200 dilution and counter-stained with DAPI (blue).



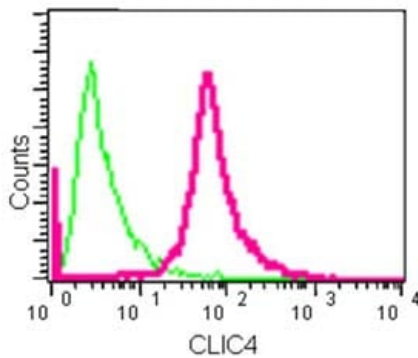
Immunohistochemical analysis of paraffin embedded Human melanoma tissue labeling CLIC4 with ab183043 at 1/100 dilution followed by pre-diluted HRP-conjugated secondary antibody and counter-stained with Hematoxylin.

Perform heat mediated antigen retrieval with EDTA buffer pH 9 before commencing with IHC staining protocol.



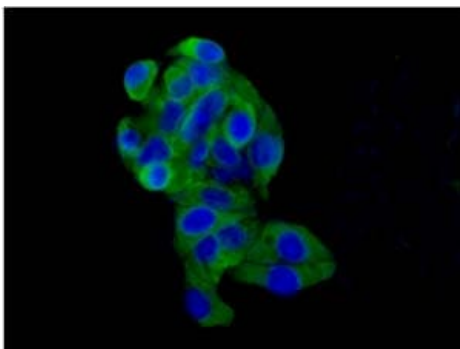
Immunoprecipitation - Anti-CLIC4 antibody
[EPR14253] (ab183043)

Western blot analysis of immunoprecipitation pellet from Human Raji cell lysate immunoprecipitated using ab183043 at 1/50 dilution. Anti-Rabbit IgG (HRP), specific to the non-reduced form of IgG secondary antibody used at 1/1500 dilution.



Flow Cytometry (Intracellular) - Anti-CLIC4 antibody
[EPR14253] (ab183043)

Intracellular flow cytometric analysis of Raji cells (paraformaldehyde-fixed, 2%) labeling CLIC4 with ab183043 at 1/90 dilution (red) or a rabbit IgG (negative) (green), followed by Goat anti rabbit IgG (FITC) secondary at 1/150 dilution.



Immunocytochemistry/ Immunofluorescence - Anti-CLIC4 antibody [EPR14253] (ab183043)

Immunofluorescence analysis of HepG2 cells (paraformaldehyde-fixed, 4%) labeling CLIC4 with ab183043 at 1/500 dilution followed by Goat anti rabbit IgG (AlexaFluor® 488) secondary at 1/200 dilution and counter-stained with DAPI (blue).

Why choose a recombinant antibody?



Research with confidence
Consistent and reproducible results



Long-term and scalable supply
Recombinant technology



Success from the first experiment
Confirmed specificity



Ethical standards compliant
Animal-free production

Anti-CLIC4 antibody [EPR14253] (ab183043)

Please note: All products are "FOR RESEARCH USE ONLY. NOT FOR USE IN DIAGNOSTIC PROCEDURES"

Our Abpromise to you: Quality guaranteed and expert technical support

- Replacement or refund for products not performing as stated on the datasheet
- Valid for 12 months from date of delivery
- Response to your inquiry within 24 hours
- We provide support in Chinese, English, French, German, Japanese and Spanish
- Extensive multi-media technical resources to help you
- We investigate all quality concerns to ensure our products perform to the highest standards

If the product does not perform as described on this datasheet, we will offer a refund or replacement. For full details of the Abpromise, please visit <https://www.abcam.com/abpromise> or contact our technical team.

Terms and conditions

- Guarantee only valid for products bought direct from Abcam or one of our authorized distributors