

Product datasheet

Anti-CLPTM1 antibody [EPR8800] ab133756

KO

VALIDATED

Recombinant

RabMAb

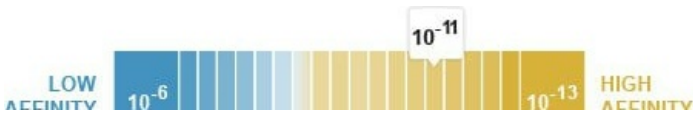
7 Images

Overview

Product name	Anti-CLPTM1 antibody [EPR8800]
Description	Rabbit monoclonal [EPR8800] to CLPTM1
Host species	Rabbit
Tested applications	<b>Suitable for:</b> WB, IHC-P, ICC/IF, Flow Cyt (Intra) <b>Unsuitable for:</b> IP
Species reactivity	<b>Reacts with:</b> Human
Immunogen	Synthetic peptide within Human CLPTM1 aa 1-100 (N terminal). The exact sequence is proprietary. Database link: <a href="#">O96005</a>
Positive control	WB: A549, HAP1, HeLa, 293T, U87 MG, HepG2 and Jurkat cell lysate, IHC: Papillary adenocarcinoma of Human thyroid gland tissue. ICC/IF: HeLa cells Flow Cyt: A549 cells
General notes	<p>This product is a recombinant monoclonal antibody, which offers several advantages including:</p> <ul style="list-style-type: none"><li>- High batch-to-batch consistency and reproducibility</li><li>- Improved sensitivity and specificity</li><li>- Long-term security of supply</li><li>- Animal-free production</li></ul> <p>For more information <a href="#">see here</a>.</p> <p>Our RabMAb<sup>®</sup> technology is a patented hybridoma-based technology for making rabbit monoclonal antibodies. For details on our patents, please refer to <a href="#">RabMAb<sup>®</sup> patents</a>.</p> <p>Mouse, Rat: We have preliminary internal testing data to indicate this antibody may not react with these species. Please contact us for more information.</p>

Properties

Form	Liquid
Storage instructions	Shipped at 4°C. Store at -20°C. Stable for 12 months at -20°C.
Dissociation constant (K <sub>D</sub> )	K <sub>D</sub> = 3.45 x 10 <sup>-11</sup> M





[Learn more about K<sub>D</sub>](#)

<b>Storage buffer</b>	pH: 7.20 Preservative: 0.01% Sodium azide Constituents: 9% PBS, 40% Glycerol (glycerin, glycerine), 0.05% BSA, 50% Tissue culture supernatant
<b>Purity</b>	Protein A purified
<b>Clonality</b>	Monoclonal
<b>Clone number</b>	EPR8800
<b>Isotype</b>	IgG

## Applications

**The Abpromise guarantee** Our **Abpromise guarantee** covers the use of ab133756 in the following tested applications. The application notes include recommended starting dilutions; optimal dilutions/concentrations should be determined by the end user.

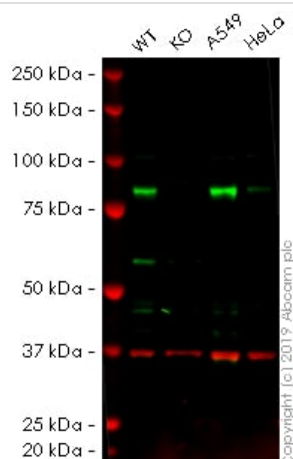
Application	Abreviews	Notes
<b>WB</b>		1/1000 - 1/10000. Detects a band of approximately 90 kDa (predicted molecular weight: 76 kDa).
<b>IHC-P</b>		1/50 - 1/100. Perform heat mediated antigen retrieval with citrate buffer pH 6 before commencing with IHC staining protocol.
<b>ICC/IF</b>		1/250 - 1/500.
<b>Flow Cyt (Intra)</b>		1/200. <b>ab172730</b> - Rabbit monoclonal IgG, is suitable for use as an isotype control with this antibody.

**Application notes** Is unsuitable for IP.

## Target

<b>Function</b>	May play a role in T-cell development.
<b>Tissue specificity</b>	Widely expressed.
<b>Sequence similarities</b>	Belongs to the CLPTM1 family.
<b>Cellular localization</b>	Membrane.

## Images



Western blot - Anti-CLPTM1 antibody [EPR8800] (ab133756)

**All lanes :** Anti-CLPTM1 antibody [EPR8800] (ab133756) at 1/1000 dilution

**Lane 1 :** Wild-type HAP1 whole cell lysate

**Lane 2 :** CLPTM1 knockout HAP1 whole cell lysate

**Lane 3 :** A549 whole cell lysate

**Lane 4 :** HeLa whole cell lysate

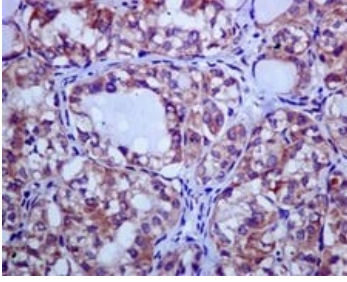
Lysates/proteins at 20 µg per lane.

**Predicted band size:** 76 kDa

**Observed band size:** 76 kDa

**Lanes 1 - 4:** Merged signal (red and green). Green - ab133756 observed at 76 kDa. Red - loading control, **ab8245**, observed at 37 kDa.

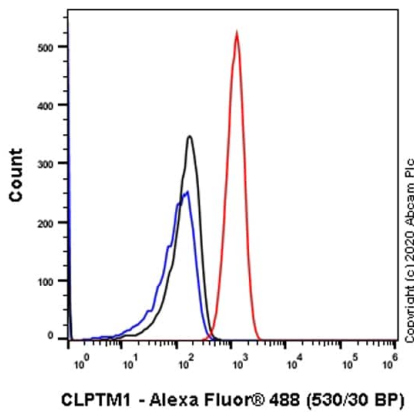
ab133756 was shown to recognize in wild-type HAP1 cells as signal was lost at the expected MW in CLPTM1 knockout cells. Additional cross-reactive bands were observed in the wild-type and knockout cells. Wild-type and CLPTM1 knockout samples were subjected to SDS-PAGE. The membrane was blocked with 3pc Milk. Ab133756 and **ab8245** (Mouse anti GAPDH loading control) were incubated overnight at 4°C at 1/1000 dilution and 1/20000 dilution respectively. Blots were developed with Goat anti-Rabbit IgG H&L (IRDye® 800CW) preabsorbed **ab216773** and Goat anti-Mouse IgG H&L (IRDye® 680RD) preabsorbed **ab216776** secondary antibodies at 1/20000 dilution for 1 hour at room temperature before imaging.



Immunohistochemistry (Formalin/PFA-fixed paraffin-embedded sections) - Anti-CLPTM1 antibody [EPR8800] (ab133756)

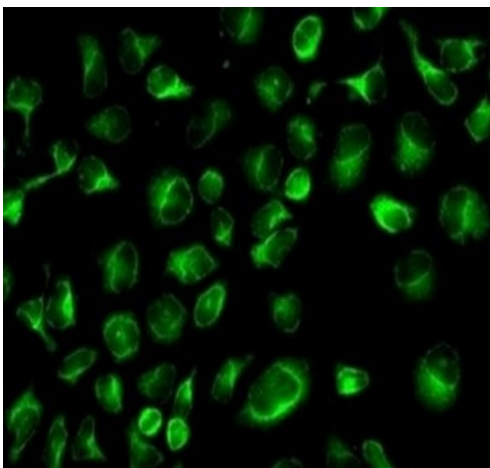
Immunohistochemical analysis of paraffin embedded papillary adenocarcinoma of Human thyroid gland tissue labelling CLPTM1 with ab133756 at 1/50.

Perform heat mediated antigen retrieval with citrate buffer pH 6 before commencing with IHC staining protocol.



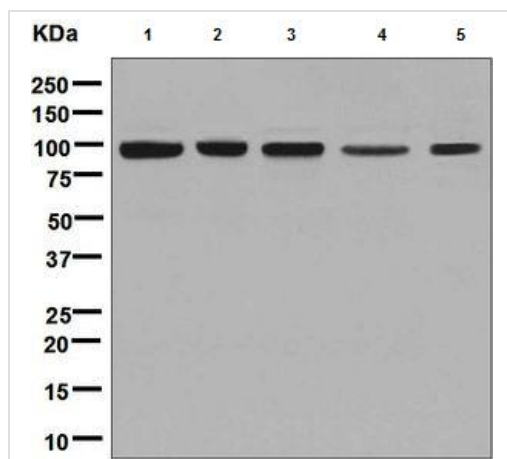
Flow Cytometry (Intracellular) - Anti-CLPTM1 antibody [EPR8800] (ab133756)

Flow Cytometry analysis of A549 (Human lung carcinoma epithelial cell) cells labeling CLPTM1 with purified ab133756 at 1/200 dilution (1 µg/mL) (Red). Cells were fixed with 4% Paraformaldehyde and permeabilised with 90% Methanol. A Goat anti rabbit IgG (Alexa Fluor® 488, [ab150077](#)) secondary antibody was used at 1/2000. Isotype control - Rabbit monoclonal IgG (Black). Unlabeled control - Cell without incubation with primary antibody and secondary antibody (Blue).



Immunocytochemistry/ Immunofluorescence - Anti-CLPTM1 antibody [EPR8800] (ab133756)

Immunofluorescent staining of HeLa cells labelling CLPTM1 with ab133756 at 1/250.



Western blot - Anti-CLPTM1 antibody [EPR8800]  
(ab133756)

**All lanes :** Anti-CLPTM1 antibody [EPR8800] (ab133756) at 1/1000 dilution

**Lane 1 :** HeLa cell lysate

**Lane 2 :** 293T cell lysate

**Lane 3 :** U87 MG cell lysate

**Lane 4 :** HepG2 cell lysate

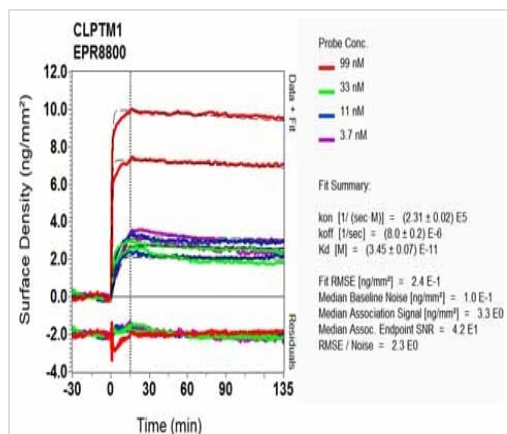
**Lane 5 :** Jurkat cell lysate

Lysates/proteins at 10 µg per lane.

## Secondary

**All lanes :** Goat anti-rabbit HRP conjugated antibody at 1/2000 dilution

**Predicted band size:** 76 kDa



SPR Scanning - Anti-CLPTM1 antibody [EPR8800]  
(ab133756)

Equilibrium dissociation constant ( $K_D$ )

Learn more about  $K_D$

[Click here to learn more about  \$K\_D\$](#)

### Why choose a recombinant antibody?



**Research with confidence**  
Consistent and reproducible results



**Long-term and scalable supply**  
Recombinant technology



**Success from the first experiment**  
Confirmed specificity



**Ethical standards compliant**  
Animal-free production

Anti-CLPTM1 antibody [EPR8800] (ab133756)

**Please note:** All products are "FOR RESEARCH USE ONLY. NOT FOR USE IN DIAGNOSTIC PROCEDURES"

### Our Abpromise to you: Quality guaranteed and expert technical support

---

- Replacement or refund for products not performing as stated on the datasheet
- Valid for 12 months from date of delivery
- Response to your inquiry within 24 hours
- We provide support in Chinese, English, French, German, Japanese and Spanish
- Extensive multi-media technical resources to help you
- We investigate all quality concerns to ensure our products perform to the highest standards

If the product does not perform as described on this datasheet, we will offer a refund or replacement. For full details of the Abpromise, please visit <https://www.abcam.com/abpromise> or contact our technical team.

### Terms and conditions

---

- Guarantee only valid for products bought direct from Abcam or one of our authorized distributors