

# Anti-CLPTM1 antibody [EPR8800] - BSA and Azide free ab248641

KO VALIDATED

Recombinant

RabMAb

3 Images

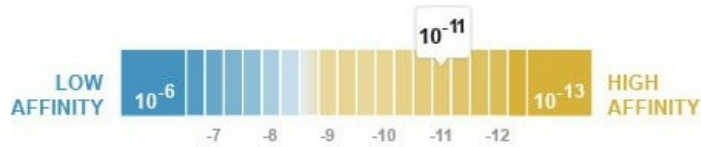
### Overview

Product name	Anti-CLPTM1 antibody [EPR8800] - BSA and Azide free
Description	Rabbit monoclonal [EPR8800] to CLPTM1 - BSA and Azide free
Host species	Rabbit
Tested applications	<b>Suitable for:</b> ICC/IF, WB, IHC-P, Flow Cyt (Intra) <b>Unsuitable for:</b> IP
Species reactivity	<b>Reacts with:</b> Human
Immunogen	Synthetic peptide. This information is proprietary to Abcam and/or its suppliers.
Positive control	WB: HAP1, A549 and HeLa cell lysates. Flow Cyt: A549 cells
General notes	<p>ab248641 is the carrier-free version of <a href="#">ab133756</a>.</p> <p>Our <b>carrier-free</b> antibodies are typically supplied in a PBS-only formulation, purified and free of BSA, sodium azide and glycerol. The carrier-free buffer and high concentration allow for increased conjugation efficiency.</p> <p>This conjugation-ready format is designed for use with fluorochromes, metal isotopes, oligonucleotides, and enzymes, which makes them ideal for antibody labelling, functional and cell-based assays, flow-based assays (e.g. mass cytometry) and Multiplex Imaging applications.</p> <p>Use our <b>conjugation kits</b> for antibody conjugates that are ready-to-use in as little as 20 minutes with &lt;1 minute hands-on-time and 100% antibody recovery: available for fluorescent dyes, HRP, biotin and gold.</p> <p>This product is compatible with the Maxpar<sup>®</sup> Antibody Labeling Kit from Fluidigm, without the need for antibody preparation. Maxpar<sup>®</sup> is a trademark of Fluidigm Canada Inc.</p> <p>This product is a recombinant monoclonal antibody, which offers several advantages including:</p> <ul style="list-style-type: none"> <li>- High batch-to-batch consistency and reproducibility</li> <li>- Improved sensitivity and specificity</li> <li>- Long-term security of supply</li> <li>- Animal-free production</li> </ul> <p>For more information <a href="#">see here</a>.</p> <p>Our RabMAb<sup>®</sup> technology is a patented hybridoma-based technology for making rabbit monoclonal antibodies. For details on our patents, please refer to <a href="#">RabMAb<sup>®</sup> patents</a>.</p>

Mouse, Rat: We have preliminary internal testing data to indicate this antibody may not react with these species. Please contact us for more information.

## Properties

Form	Liquid
Storage instructions	Shipped at 4°C. Store at +4°C. Do Not Freeze.
Dissociation constant ( $K_D$ )	$K_D = 3.45 \times 10^{-11}$ M



[Learn more about  \$K\_D\$](#)

Storage buffer	pH: 7.2 Constituent: PBS
Carrier free	Yes
Purity	Protein A purified
Clonality	Monoclonal
Clone number	EPR8800
Isotype	IgG

## Applications

**The Abpromise guarantee** Our **Abpromise guarantee** covers the use of ab248641 in the following tested applications. The application notes include recommended starting dilutions; optimal dilutions/concentrations should be determined by the end user.

Application	Abreviews	Notes
ICC/IF		Use at an assay dependent concentration.
WB		Use at an assay dependent concentration. Detects a band of approximately 90 kDa (predicted molecular weight: 76 kDa).
IHC-P		Use at an assay dependent concentration. Perform heat mediated antigen retrieval with citrate buffer pH 6 before commencing with IHC staining protocol.
Flow Cyt (Intra)		Use at an assay dependent concentration.

**Application notes** Is unsuitable for IP.

## Target

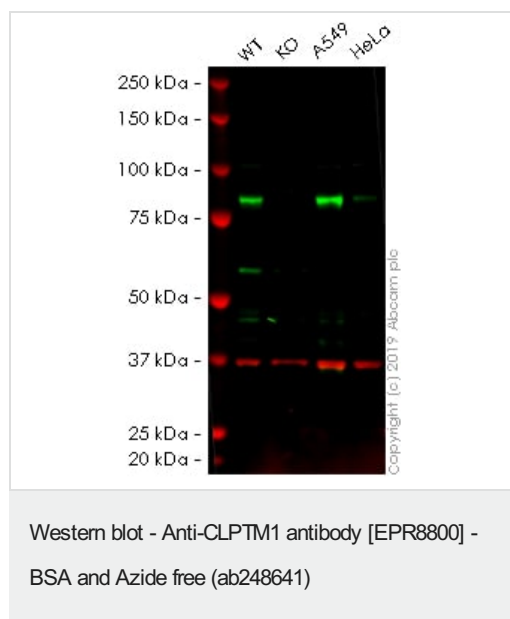
Function	May play a role in T-cell development.
Tissue specificity	Widely expressed.

**Sequence similarities**

Belongs to the CLPTM1 family.

**Cellular localization**

Membrane.

**Images**

**All lanes :** Anti-CLPTM1 antibody [EPR8800] ([ab133756](#)) at 1/1000 dilution

**Lane 1 :** Wild-type HAP1 whole cell lysate

**Lane 2 :** CLPTM1 knockout HAP1 whole cell lysate

**Lane 3 :** A549 whole cell lysate

**Lane 4 :** HeLa whole cell lysate

Lysates/proteins at 20 µg per lane.

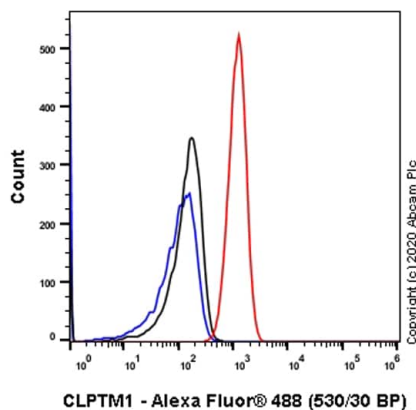
**Predicted band size:** 76 kDa

**Observed band size:** 76 kDa

**Lanes 1 - 4:** Merged signal (red and green). Green - [ab133756](#) observed at 76 kDa. Red - loading control, [ab8245](#), observed at 37 kDa.

[ab133756](#) was shown to recognize in wild-type HAP1 cells as signal was lost at the expected MW in CLPTM1 knockout cells. Additional cross-reactive bands were observed in the wild-type and knockout cells. Wild-type and CLPTM1 knockout samples were subjected to SDS-PAGE. The membrane was blocked with 3pc Milk. Ab133756 and [ab8245](#) (Mouse anti GAPDH loading control) were incubated overnight at 4°C at 1/1000 dilution and 1/20000 dilution respectively. Blots were developed with Goat anti-Rabbit IgG H&L (IRDye® 800CW) preabsorbed [ab216773](#) and Goat anti-Mouse IgG H&L (IRDye® 680RD) preabsorbed [ab216776](#) secondary antibodies at 1/20000 dilution for 1 hour at room temperature before imaging.

This data was developed using the same antibody clone in a different buffer formulation containing PBS, BSA, glycerol, and sodium azide ([ab133756](#)).

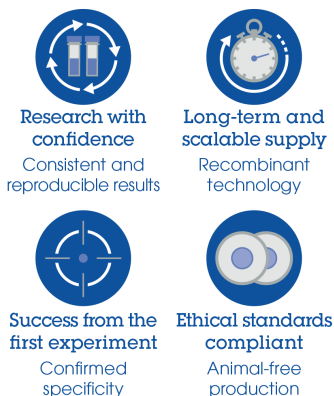


Flow Cytometry (Intracellular) - Anti-CLPTM1  
antibody [EPR8800] - BSA and Azide free  
(ab248641)

This data was developed using **ab133756**, the same antibody clone in a different buffer formulation.

Flow Cytometry analysis of A549 (Human lung carcinoma epithelial cell) cells labeling CLPTM1 with purified **ab133756** at 1/200 dilution (1 µg/mL) (Red). Cells were fixed with 4% Paraformaldehyde and permeabilised with 90% Methanol. A Goat anti rabbit IgG (Alexa Fluor® 488, **ab150077**) secondary antibody was used at 1/2000. Isotype control - Rabbit monoclonal IgG (Black). Unlabeled control - Cell without incubation with primary antibody and secondary antibody (Blue).

#### Why choose a recombinant antibody?



Anti-CLPTM1 antibody [EPR8800] - BSA and Azide free (ab248641)

**Please note:** All products are "FOR RESEARCH USE ONLY. NOT FOR USE IN DIAGNOSTIC PROCEDURES"

#### Our Abpromise to you: Quality guaranteed and expert technical support

- Replacement or refund for products not performing as stated on the datasheet
- Valid for 12 months from date of delivery
- Response to your inquiry within 24 hours
- We provide support in Chinese, English, French, German, Japanese and Spanish
- Extensive multi-media technical resources to help you

- We investigate all quality concerns to ensure our products perform to the highest standards

If the product does not perform as described on this datasheet, we will offer a refund or replacement. For full details of the Abpromise, please visit <https://www.abcam.com/abpromise> or contact our technical team.

#### **Terms and conditions**

---

- Guarantee only valid for products bought direct from Abcam or one of our authorized distributors