


Product datasheet

Anti-CLPX antibody [EP8772] ab168338

Recombinant RabMAb

★★★★☆ [2 Abreviews](#) [9 References](#) [3 Images](#)

Overview

Product name	Anti-CLPX antibody [EP8772]
Description	Rabbit monoclonal [EP8772] to CLPX
Host species	Rabbit
Tested applications	Suitable for: WB, ICC/IF Unsuitable for: Flow Cyt, IHC-P or IP
Species reactivity	Reacts with: Human Predicted to work with: Mouse, Rat 
Immunogen	Synthetic peptide. This information is proprietary to Abcam and/or its suppliers.
Positive control	A673, HT-1080, Saos-2, Human fetal liver & heart lysates, A673 cells
General notes	<p>This product is a recombinant monoclonal antibody, which offers several advantages including:</p> <ul style="list-style-type: none">- High batch-to-batch consistency and reproducibility- Improved sensitivity and specificity- Long-term security of supply- Animal-free production <p>For more information see here.</p> <p>Our RabMAb[®] technology is a patented hybridoma-based technology for making rabbit monoclonal antibodies. For details on our patents, please refer to RabMAb[®] patents.</p>

Properties

Form	Liquid
Storage instructions	Shipped at 4°C. Store at +4°C short term (1-2 weeks). Upon delivery aliquot. Store at -20°C long term.
Storage buffer	pH: 7.2 Preservative: 0.01% Sodium azide Constituents: 9% PBS, 40% Glycerol (glycerin, glycerine), 0.05% BSA, 50% Tissue culture supernatant
Purity	Protein A purified
Clonality	Monoclonal

Clone number EP8772

Isotype IgG

Applications

The Abpromise guarantee Our **Abpromise guarantee** covers the use of ab168338 in the following tested applications.

The application notes include recommended starting dilutions; optimal dilutions/concentrations should be determined by the end user.

Application	Abreviews	Notes
WB	★★★★☆ (2)	1/1000 - 1/5000. Predicted molecular weight: 69 kDa.
ICC/IF		1/100 - 1/250.

Application notes Is unsuitable for Flow Cyt, IHC-P or IP.

Target

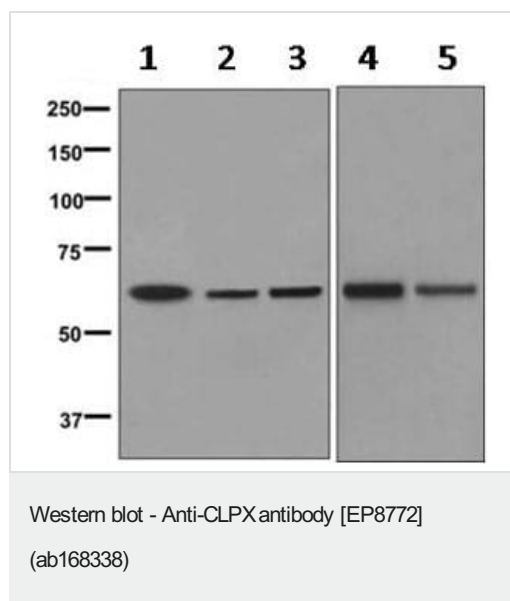
Function ATP-dependent specificity component of the Clp protease. It directs the protease to specific substrates. Can perform chaperone functions in the absence of clpP.

Tissue specificity Higher expression in skeletal muscle and heart and to a lesser extent in liver, brain, placenta, lung, kidney and pancreas.

Sequence similarities Belongs to the ClpX chaperone family.

Cellular localization Mitochondrion.

Images



All lanes : Anti-CLPX antibody [EP8772] (ab168338) at 1/1000 dilution

Lane 1 : A673 lysates

Lane 2 : HT-1080 lysates

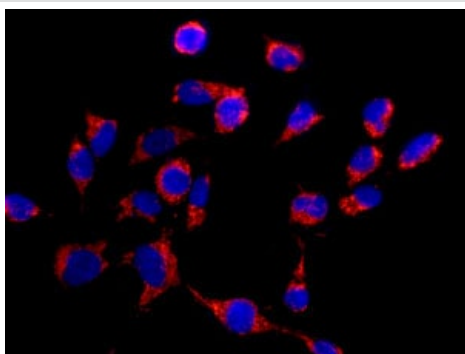
Lane 3 : Saos-2 lysates

Lane 4 : Human fetal liver lysates

Lane 5 : Human fetal heart lysates

Lysates/proteins at 10 µg per lane.

Predicted band size: 69 kDa



Immunofluorescence analysis of A673 cells (red) labeling CLPX with ab168338 at 1/100 dilution. DAPI nuclear staining (blue).

Immunocytochemistry/ Immunofluorescence - Anti-CLPX antibody [EP8772] (ab168338)

Why choose a recombinant antibody?



Research with confidence
Consistent and reproducible results



Long-term and scalable supply
Recombinant technology



Success from the first experiment
Confirmed specificity



Ethical standards compliant
Animal-free production

Anti-CLPX antibody [EP8772] (ab168338)

Please note: All products are "FOR RESEARCH USE ONLY. NOT FOR USE IN DIAGNOSTIC PROCEDURES"

Our Abpromise to you: Quality guaranteed and expert technical support

- Replacement or refund for products not performing as stated on the datasheet
- Valid for 12 months from date of delivery
- Response to your inquiry within 24 hours
- We provide support in Chinese, English, French, German, Japanese and Spanish
- Extensive multi-media technical resources to help you
- We investigate all quality concerns to ensure our products perform to the highest standards

If the product does not perform as described on this datasheet, we will offer a refund or replacement. For full details of the Abpromise, please visit <https://www.abcam.com/abpromise> or contact our technical team.

Terms and conditions

- Guarantee only valid for products bought direct from Abcam or one of our authorized distributors