


## Product datasheet

# Anti-CLPX antibody [EP8772] - BSA and Azide free ab240151

Recombinant RabMAb

2 Images

### Overview

<b>Product name</b>	Anti-CLPX antibody [EP8772] - BSA and Azide free
<b>Description</b>	Rabbit monoclonal [EP8772] to CLPX - BSA and Azide free
<b>Host species</b>	Rabbit
<b>Tested applications</b>	<b>Suitable for:</b> ICC/IF, WB <b>Unsuitable for:</b> Flow Cyt, IHC-P or IP
<b>Species reactivity</b>	<b>Reacts with:</b> Human <b>Predicted to work with:</b> Mouse, Rat 
<b>Immunogen</b>	Synthetic peptide within Human CLPX. The exact sequence is proprietary.
<b>General notes</b>	<p>ab240151 is the carrier-free version of <a href="#">ab168338</a>.</p> <p>Our <b>carrier-free</b> antibodies are typically supplied in a PBS-only formulation, purified and free of BSA, sodium azide and glycerol. The carrier-free buffer and high concentration allow for increased conjugation efficiency.</p> <p>This conjugation-ready format is designed for use with fluorochromes, metal isotopes, oligonucleotides, and enzymes, which makes them ideal for antibody labelling, functional and cell-based assays, flow-based assays (e.g. mass cytometry) and Multiplex Imaging applications.</p> <p>Use our <b>conjugation kits</b> for antibody conjugates that are ready-to-use in as little as 20 minutes with &lt;1 minute hands-on-time and 100% antibody recovery: available for fluorescent dyes, HRP, biotin and gold.</p> <p>This product is compatible with the Maxpar<sup>®</sup> Antibody Labeling Kit from Fluidigm, without the need for antibody preparation. Maxpar<sup>®</sup> is a trademark of Fluidigm Canada Inc.</p> <p>This product is a recombinant monoclonal antibody, which offers several advantages including:</p> <ul style="list-style-type: none"><li>- High batch-to-batch consistency and reproducibility</li><li>- Improved sensitivity and specificity</li><li>- Long-term security of supply</li><li>- Animal-free production</li></ul> <p>For more information <a href="#">see here</a>.</p> <p>Our RabMAb<sup>®</sup> technology is a patented hybridoma-based technology for making rabbit monoclonal antibodies. For details on our patents, please refer to <a href="#">RabMAb<sup>®</sup> patents</a>.</p>

## Properties

---

<b>Form</b>	Liquid
<b>Storage instructions</b>	Shipped at 4°C. Store at +4°C. Do Not Freeze.
<b>Storage buffer</b>	pH: 7.2 Constituent: PBS
<b>Carrier free</b>	Yes
<b>Purity</b>	Protein A purified
<b>Clonality</b>	Monoclonal
<b>Clone number</b>	EP8772
<b>Isotype</b>	IgG

## Applications

---

**The Abpromise guarantee** Our **Abpromise guarantee** covers the use of ab240151 in the following tested applications. The application notes include recommended starting dilutions; optimal dilutions/concentrations should be determined by the end user.

Application	Abreviews	Notes
ICC/IF		Use at an assay dependent concentration.
WB		Use at an assay dependent concentration. Predicted molecular weight: 69 kDa.

**Application notes** Is unsuitable for Flow Cyt, IHC-P or IP.

## Target

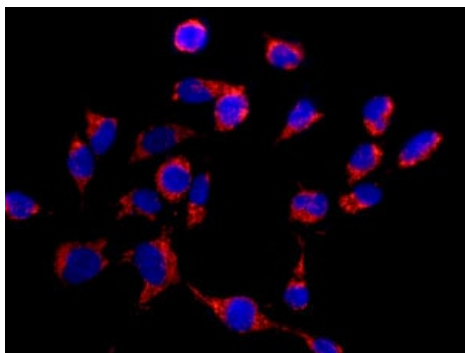
---

<b>Function</b>	ATP-dependent specificity component of the Clp protease. It directs the protease to specific substrates. Can perform chaperone functions in the absence of clpP.
<b>Tissue specificity</b>	Higher expression in skeletal muscle and heart and to a lesser extent in liver, brain, placenta, lung, kidney and pancreas.
<b>Sequence similarities</b>	Belongs to the ClpX chaperone family.
<b>Cellular localization</b>	Mitochondrion.

---

## Images

---



Immunofluorescence analysis of A673 cells (red) labeling CLPX with **ab168338** at 1/100 dilution. DAPI nuclear staining (blue).

This data was developed using the same antibody clone in a different buffer formulation containing PBS, BSA, glycerol, and sodium azide (**ab168338**).

Immunocytochemistry/ Immunofluorescence - Anti-CLPX antibody [EP8772] - BSA and Azide free (ab240151)

#### Why choose a recombinant antibody?



**Research with confidence**  
Consistent and reproducible results



**Long-term and scalable supply**  
Recombinant technology



**Success from the first experiment**  
Confirmed specificity



**Ethical standards compliant**  
Animal-free production

Anti-CLPX antibody [EP8772] - BSA and Azide free (ab240151)

**Please note:** All products are "FOR RESEARCH USE ONLY. NOT FOR USE IN DIAGNOSTIC PROCEDURES"

#### Our Abpromise to you: Quality guaranteed and expert technical support

- Replacement or refund for products not performing as stated on the datasheet
- Valid for 12 months from date of delivery
- Response to your inquiry within 24 hours
- We provide support in Chinese, English, French, German, Japanese and Spanish

- Extensive multi-media technical resources to help you
- We investigate all quality concerns to ensure our products perform to the highest standards

If the product does not perform as described on this datasheet, we will offer a refund or replacement. For full details of the Abpromise, please visit <https://www.abcam.com/abpromise> or contact our technical team.

### **Terms and conditions**

---

- Guarantee only valid for products bought direct from Abcam or one of our authorized distributors