



Product datasheet

Anti-CMPK2 antibody ab194567

[2 References](#) [2 Images](#)

Overview

Product name	Anti-CMPK2 antibody
Description	Mouse polyclonal to CMPK2
Host species	Mouse
Tested applications	Suitable for: WB
Species reactivity	Reacts with: Human
Immunogen	Recombinant fragment (GST-tag) corresponding to Human CMPK2 aa 150-250. (NP_997198). Database link: Q5EBM0 <div>  Run BLAST with  Run BLAST with </div>
Positive control	Jurkat cell lysate; recombinant Human CMPK2 protein (immunogen).
General notes	<p>The Life Science industry has been in the grips of a reproducibility crisis for a number of years. Abcam is leading the way in addressing this with our range of recombinant monoclonal antibodies and knockout edited cell lines for gold-standard validation. Please check that this product meets your needs before purchasing.</p> <p>If you have any questions, special requirements or concerns, please send us an inquiry and/or contact our Support team ahead of purchase. Recommended alternatives for this product can be found below, along with publications, customer reviews and Q&As</p>

Properties

Form	Liquid
Storage instructions	Shipped at 4°C. Store at +4°C short term (1-2 weeks). Upon delivery aliquot. Store at -20°C long term. Avoid freeze / thaw cycle.
Storage buffer	Constituent: 50% Glycerol (glycerin, glycerine)
Purity	Whole antiserum
Clonality	Polyclonal
Isotype	IgG

Applications

The Abpromise guarantee Our [Abpromise guarantee](#) covers the use of ab194567 in the following tested applications.

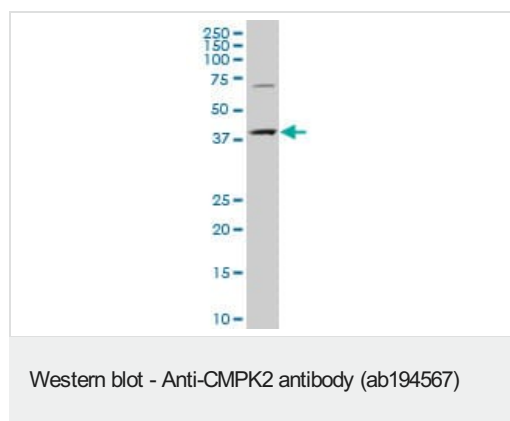
The application notes include recommended starting dilutions; optimal dilutions/concentrations should be determined by the end user.

Application	Abreviews	Notes
WB		1/500 - 1/2500. Predicted molecular weight: 49 kDa.

Target

Function	May participate in dUTP and dCTP synthesis in mitochondria. Is able to phosphorylate dUMP, dCMP, CMP, UMP and monophosphates of the pyrimidine nucleoside analogs ddC, dFdC, araC, BVdU and FdUrd with ATP as phosphate donor. Efficacy is highest for dUMP followed by dCMP; CMP and UMP are poor substrates. May be involved in mtDNA depletion caused by long term treatment with ddC or other pyrimidine analogs.
Tissue specificity	Among all investigated tumors, leukemia cells show the most abundant expression.
Sequence similarities	Belongs to the thymidylate kinase family.
Cellular localization	Mitochondrion.

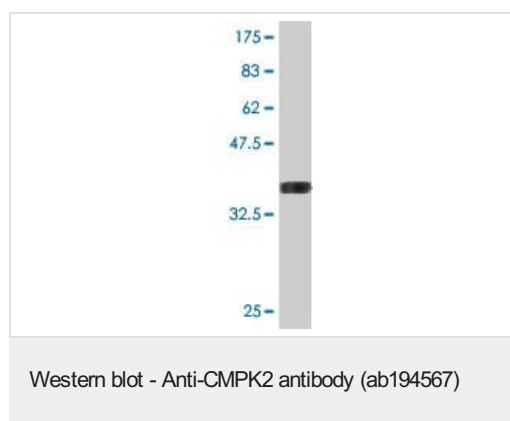
Images



Anti-CMPK2 antibody (ab194567) at 1/500 dilution + Jurkat cell lysate at 50 µg

Developed using the ECL technique.

Predicted band size: 49 kDa



Anti-CMPK2 antibody (ab194567) at 1/1000 dilution + recombinant Human CMPK2 protein (immunogen) at 0.2 µg

Developed using the ECL technique.

Predicted band size: 49 kDa

Predicted MWt of immunogen: 37.11 kDa.

Please note: All products are "FOR RESEARCH USE ONLY. NOT FOR USE IN DIAGNOSTIC PROCEDURES"

Our Abpromise to you: Quality guaranteed and expert technical support

- Replacement or refund for products not performing as stated on the datasheet
- Valid for 12 months from date of delivery
- Response to your inquiry within 24 hours

- We provide support in Chinese, English, French, German, Japanese and Spanish
- Extensive multi-media technical resources to help you
- We investigate all quality concerns to ensure our products perform to the highest standards

If the product does not perform as described on this datasheet, we will offer a refund or replacement. For full details of the Abpromise, please visit <https://www.abcam.com/abpromise> or contact our technical team.

Terms and conditions

- Guarantee only valid for products bought direct from Abcam or one of our authorized distributors