



## Product datasheet

### Anti-CMTM5 antibody - N-terminal ab187980

★★★★★ [2 Abreviews](#) [2 References](#) [5 Images](#)

#### Overview

<b>Product name</b>	Anti-CMTM5 antibody - N-terminal
<b>Description</b>	Rabbit polyclonal to CMTM5 - N-terminal
<b>Host species</b>	Rabbit
<b>Tested applications</b>	<b>Suitable for:</b> IHC-P, ICC/IF, WB
<b>Species reactivity</b>	<b>Reacts with:</b> Human
<b>Immunogen</b>	Recombinant fragment corresponding to Human CMTM5 aa 1-100 (N terminal). Database link: <a href="#">Q96DZ9</a>
	 <a href="#">Run BLAST with</a>  <a href="#">Run BLAST with</a>
<b>Positive control</b>	IHC-P: Human cerebral cortex, pancreas tissue; WB: Transfected HEK-293T and HEL whole cell lysates; ICC: HEL whole cells.
<b>General notes</b>	<p>The Life Science industry has been in the grips of a reproducibility crisis for a number of years. Abcam is leading the way in addressing this with our range of recombinant monoclonal antibodies and knockout edited cell lines for gold-standard validation. Please check that this product meets your needs before purchasing.</p> <p>If you have any questions, special requirements or concerns, please send us an inquiry and/or contact our Support team ahead of purchase. Recommended alternatives for this product can be found below, along with publications, customer reviews and Q&amp;As</p>

#### Properties

<b>Form</b>	Liquid
<b>Storage instructions</b>	Shipped at 4°C. Store at +4°C short term (1-2 weeks). Upon delivery aliquot. Store at -20°C long term. Avoid freeze / thaw cycle.
<b>Storage buffer</b>	pH: 7.20 Preservative: 0.02% Sodium azide Constituents: 59% PBS, 40% Glycerol (glycerin, glycerine)
<b>Purity</b>	Immunogen affinity purified
<b>Clonality</b>	Polyclonal
<b>Isotype</b>	IgG

## Applications

### The Abpromise guarantee

Our **Abpromise guarantee** covers the use of ab187980 in the following tested applications.

The application notes include recommended starting dilutions; optimal dilutions/concentrations should be determined by the end user.

Application	Abreviews	Notes
IHC-P	★★★★★ (2)	1/200 - 1/500. Perform heat mediated antigen retrieval with citrate buffer pH 6 before commencing with IHC staining protocol.
ICC/IF		Use a concentration of 0.25 - 2 µg/ml. Fixation/Permeabilization: PFA/Triton X-100
WB		Use a concentration of 0.04 - 0.4 µg/ml. Predicted molecular weight: 25 kDa.

## Target

### Tissue specificity

Highly expressed in the brain.

### Sequence similarities

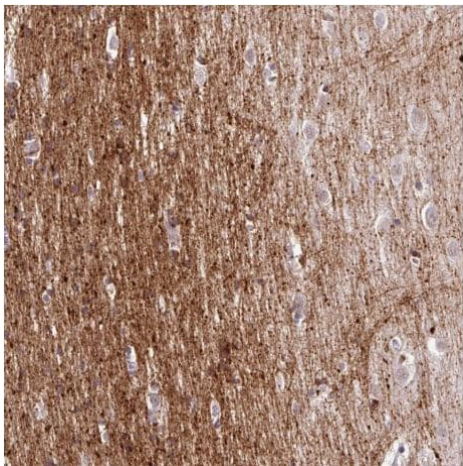
Belongs to the chemokine-like factor family.

Contains 1 MARVEL domain.

### Cellular localization

Membrane.

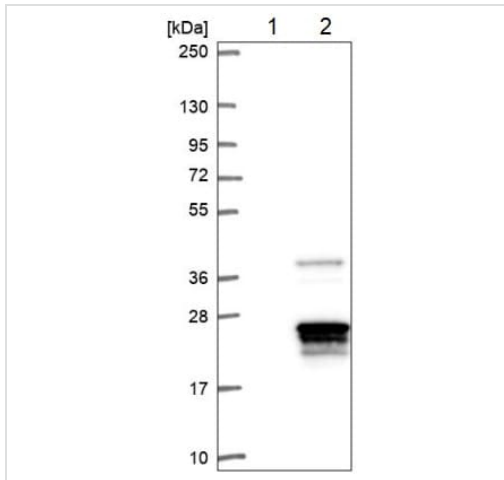
## Images



Immunohistochemical analysis of paraffin-embedded human cerebral cortex tissue labeling CMTM5 (high expression) with ab187980 at a 1/200 dilution.

Performed heat mediated antigen retrieval with citrate buffer pH 6 before commencing with IHC staining protocol.

Immunohistochemistry (Formalin/PFA-fixed paraffin-embedded sections) - Anti-CMTM5 antibody - N-terminal (ab187980)



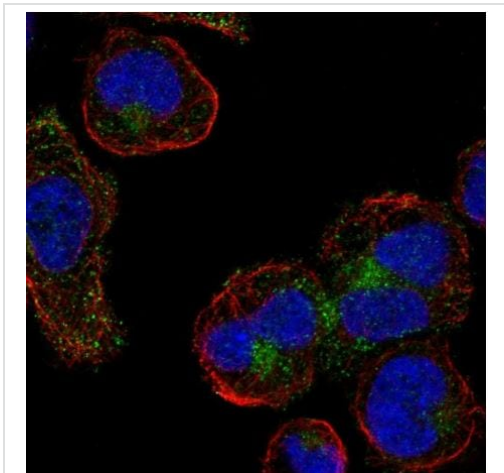
Western blot - Anti-CMTM5 antibody - N-terminal (ab187980)

**All lanes :** Anti-CMTM5 antibody - N-terminal (ab187980) at 0.4  $\mu\text{g/ml}$

**Lane 1 :** Control (vector only transfected) - HEK-293T (Human epithelial cell line from embryonic kidney transformed with large T antigen) whole cell lysate

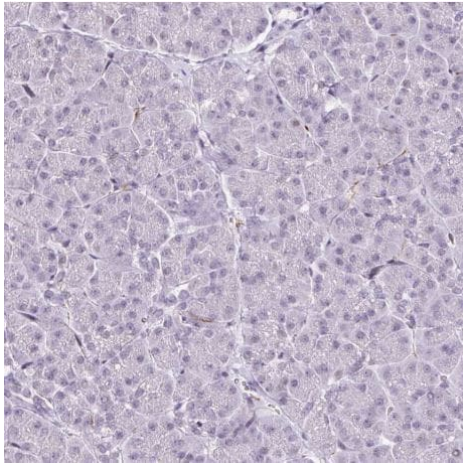
**Lane 2 :** CMTM5 over-expression - HEK-293T (Human epithelial cell line from embryonic kidney transformed with large T antigen) whole cell lysate, (Co-expressed with a C-terminal myc-DDK tag (~3.1 kDa))

**Predicted band size:** 25 kDa



Immunocytochemistry/ Immunofluorescence - Anti-CMTM5 antibody - N-terminal (ab187980)

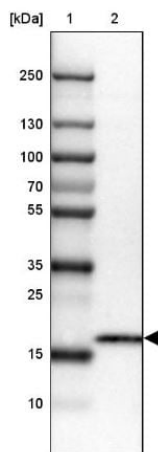
Immunocytochemical analysis of HEL (Human bone marrow erythroleukemia cell line) whole cells labeling CMTM5 in the Golgi apparatus and vesicles with ab187980 at 2  $\mu\text{g/ml}$ .



Immunohistochemistry (Formalin/PFA-fixed paraffin-embedded sections) - Anti-CMTM5 antibody - N-terminal (ab187980)

Immunohistochemical analysis of paraffin-embedded human pancreas tissue labeling CMTM5 (low expression) with ab187980 at a 1/200 dilution.

Performed heat mediated antigen retrieval with citrate buffer pH 6 before commencing with IHC staining protocol.



Western blot - Anti-CMTM5 antibody - N-terminal (ab187980)

Anti-CMTM5 antibody - N-terminal (ab187980) at 0.4 µg/ml + HEL (Human bone marrow erythroleukemia cell line) whole cell lysate

**Predicted band size: 25 kDa**

**Please note:** All products are "FOR RESEARCH USE ONLY. NOT FOR USE IN DIAGNOSTIC PROCEDURES"

### **Our Abpromise to you: Quality guaranteed and expert technical support**

---

- Replacement or refund for products not performing as stated on the datasheet
- Valid for 12 months from date of delivery
- Response to your inquiry within 24 hours
  
- We provide support in Chinese, English, French, German, Japanese and Spanish
- Extensive multi-media technical resources to help you
- We investigate all quality concerns to ensure our products perform to the highest standards

If the product does not perform as described on this datasheet, we will offer a refund or replacement. For full details of the Abpromise, please visit <https://www.abcam.com/abpromise> or contact our technical team.

### **Terms and conditions**

---

- Guarantee only valid for products bought direct from Abcam or one of our authorized distributors