

Anti-CMTM6 antibody - C-terminal ab198284

[3 References](#) [2 Images](#)

Overview

Product name	Anti-CMTM6 antibody - C-terminal
Description	Rabbit polyclonal to CMTM6 - C-terminal
Host species	Rabbit
Tested applications	Suitable for: WB, IHC-P
Species reactivity	Reacts with: Human
Immunogen	Synthetic peptide within Human CMTM6 aa 130-183 (C terminal). The exact sequence is proprietary. Database link: Q9NX76
Positive control	IHC-P: Human cervical cancer tissue. WB: HeLa and Raji cell lysate. Human placenta and testis tissue lysate.
General notes	<p>The Life Science industry has been in the grips of a reproducibility crisis for a number of years. Abcam is leading the way in addressing this with our range of recombinant monoclonal antibodies and knockout edited cell lines for gold-standard validation. Please check that this product meets your needs before purchasing.</p> <p>If you have any questions, special requirements or concerns, please send us an inquiry and/or contact our Support team ahead of purchase. Recommended alternatives for this product can be found below, along with publications, customer reviews and Q&As</p>

Properties

Form	Liquid
Storage instructions	Shipped at 4°C. Store at +4°C short term (1-2 weeks). Upon delivery aliquot. Store at -20°C long term. Avoid freeze / thaw cycle.
Storage buffer	pH: 7.4 Preservative: 0.05% Sodium azide Constituents: PBS, 50% Glycerol (glycerin, glycerine)
Purity	Immunogen affinity purified
Clonality	Polyclonal
Isotype	IgG

Applications

The Abpromise guarantee

Our **Abpromise guarantee** covers the use of ab198284 in the following tested applications.

The application notes include recommended starting dilutions; optimal dilutions/concentrations should be determined by the end user.

Application	Abreviews	Notes
WB		1/200 - 1/1000. Predicted molecular weight: 20 kDa.
IHC-P		1/20 - 1/100. Perform heat mediated antigen retrieval before commencing with IHC staining protocol.

Target

Tissue specificity

Expressed in the leukocytes, placenta and testis.

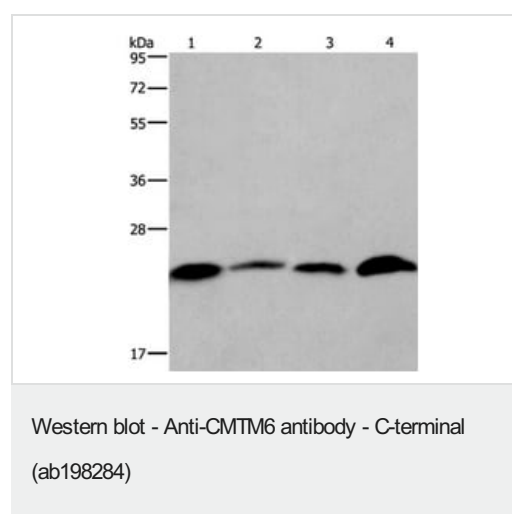
Sequence similarities

Belongs to the chemokine-like factor family.
Contains 1 MARVEL domain.

Cellular localization

Membrane.

Images



All lanes : Anti-CMTM6 antibody - C-terminal (ab198284) at 1/350 dilution

Lane 1 : Human placenta tissue lysate

Lane 2 : Human testis tissue lysate

Lane 3 : HeLa (Human epithelial cell line from cervix adenocarcinoma) cell lysate

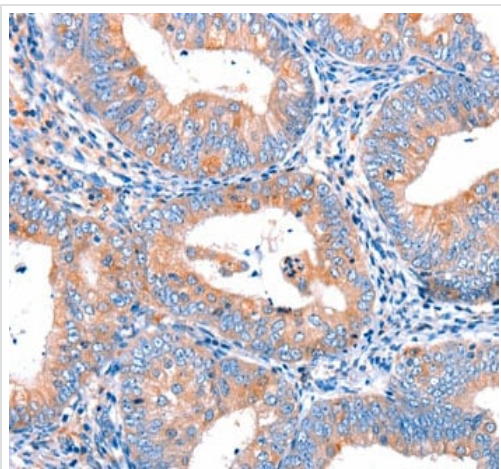
Lane 4 : Raji (Human Burkitt's lymphoma cell line) cell lysate

Lysates/proteins at 40 µg per lane.

Predicted band size: 20 kDa

Exposure time: 2 minutes

10% SDS-PAGE



Immunohistochemical analysis of paraffin embedded human cervical cancer tissue labeling CMTM6 with ab198284 at 1/17 dilution.

Immunohistochemistry (Formalin/PFA-fixed paraffin-embedded sections) - Anti-CMTM6 antibody - C-terminal (ab198284)

Please note: All products are "FOR RESEARCH USE ONLY. NOT FOR USE IN DIAGNOSTIC PROCEDURES"

Our Abpromise to you: Quality guaranteed and expert technical support

- Replacement or refund for products not performing as stated on the datasheet
- Valid for 12 months from date of delivery
- Response to your inquiry within 24 hours
- We provide support in Chinese, English, French, German, Japanese and Spanish
- Extensive multi-media technical resources to help you
- We investigate all quality concerns to ensure our products perform to the highest standards

If the product does not perform as described on this datasheet, we will offer a refund or replacement. For full details of the Abpromise, please visit <https://www.abcam.com/abpromise> or contact our technical team.

Terms and conditions

- Guarantee only valid for products bought direct from Abcam or one of our authorized distributors