

Product datasheet

Anti-CMTM6 antibody [EPR23015-45] ab264067

Recombinant RabMAb

[2 References](#) [7 Images](#)

Overview

Product name	Anti-CMTM6 antibody [EPR23015-45]
Description	Rabbit monoclonal [EPR23015-45] to CMTM6
Host species	Rabbit
Tested applications	Suitable for: Flow Cyt (Intra), IHC-P, WB Unsuitable for: ICC/IF
Species reactivity	Reacts with: Human
Immunogen	Synthetic peptide. This information is proprietary to Abcam and/or its suppliers.
Positive control	WB: MDA-MB-231, Raji and BxPC-3 whole cell lysates; human tonsil tissue lysate. IHC-P: Human tonsil, thyroid cancer and pancreatic cancer tissue. Flow Cyt (intra): MDA-MB-231 cells.
General notes	<p>This product is a recombinant monoclonal antibody, which offers several advantages including:</p> <ul style="list-style-type: none">- High batch-to-batch consistency and reproducibility- Improved sensitivity and specificity- Long-term security of supply- Animal-free production <p>For more information see here.</p> <p>Our RabMAb[®] technology is a patented hybridoma-based technology for making rabbit monoclonal antibodies. For details on our patents, please refer to RabMAb[®] patents.</p>

Properties

Form	Liquid
Storage instructions	Shipped at 4°C. Store at +4°C short term (1-2 weeks). Upon delivery aliquot. Store at -20°C long term. Avoid freeze / thaw cycle.
Storage buffer	pH: 7.2 Preservative: 0.01% Sodium azide Constituents: PBS, 40% Glycerol (glycerin, glycerine), 0.05% BSA
Purity	Protein A purified
Clonality	Monoclonal
Clone number	EPR23015-45

Isotype

IgG

Applications

The Abpromise guarantee

Our **Abpromise guarantee** covers the use of ab264067 in the following tested applications.

The application notes include recommended starting dilutions; optimal dilutions/concentrations should be determined by the end user.

Application	Abreviews	Notes
Flow Cyt (Intra)		1/500.
IHC-P		1/2000. Perform heat mediated antigen retrieval with Tris/EDTA buffer pH 9.0 before commencing with IHC staining protocol.
WB		1/1000. Predicted molecular weight: 20 kDa.

Application notes

Is unsuitable for ICC/IF.

Target

Tissue specificity

Expressed in the leukocytes, placenta and testis.

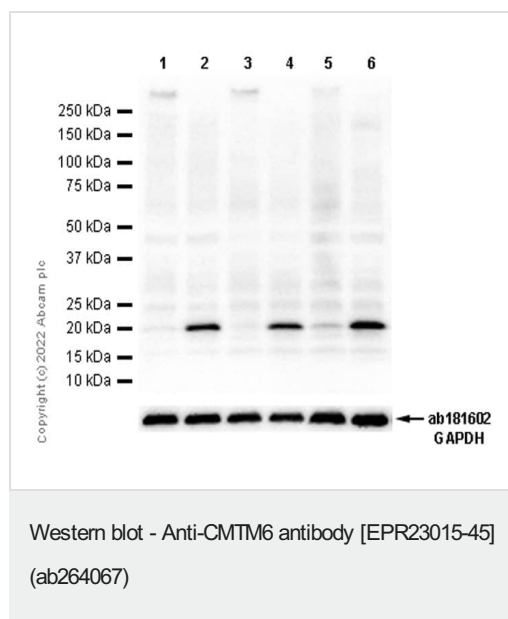
Sequence similarities

Belongs to the chemokine-like factor family.
Contains 1 MARVEL domain.

Cellular localization

Membrane.

Images



All lanes : Anti-CMTM6 antibody [EPR23015-45] (ab264067) at 1/10000 dilution

Lane 1 : MDA-MB-231 (Human breast adenocarcinoma epithelial cell) whole cell lysate boiled

Lane 2 : MDA-MB-231 (Human breast adenocarcinoma epithelial cell) whole cell lysate unboiled

Lane 3 : BxPC-3 (Human pancreas adenocarcinoma epithelial cell) whole cell lysate boiled

Lane 4 : BxPC-3 (Human pancreas adenocarcinoma epithelial cell) whole cell lysate unboiled

Lane 5 : Raji (Human Burkitt's lymphoma B lymphocyte) whole cell lysate boiled

Lane 6 : Raji (Human Burkitt's lymphoma B lymphocyte) whole cell lysate unboiled

Lysates/proteins at 20 µg per lane.

Secondary

All lanes : Goat Anti-Rabbit IgG H&L (HRP) (**ab97051**) at 1/20000 dilution

Predicted band size: 20 kDa

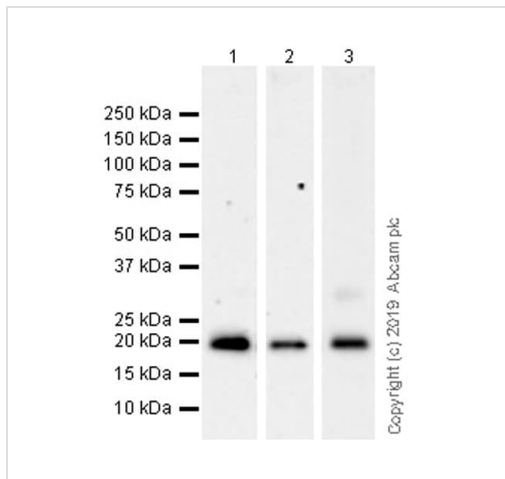
Observed band size: 20 kDa

Exposure time: 7 seconds

Blocking and diluting buffer and concentration: 5% NFDM /TBST.

ab181602 was used as GAPDH loading control.

We recommend not to boil the samples after lysis to get desired WB bands.



Western blot - Anti-CMTM6 antibody [EPR23015-45] (ab264067)

All lanes : Anti-CMTM6 antibody [EPR23015-45] (ab264067) at 1/1000 dilution

Lane 1 : MDA-MB-231 (human breast adenocarcinoma epithelial cell), whole cell lysate

Lane 2 : Human tonsil tissue lysate

Lane 3 : BxPC-3 (human pancreas adenocarcinoma epithelial cell), whole cell lysate

Lysates/proteins at 20 µg per lane.

Secondary

All lanes : Goat Anti-Rabbit IgG H&L (HRP) (**ab97051**) at 1/100000 dilution

Predicted band size: 20 kDa

Observed band size: 20 kDa

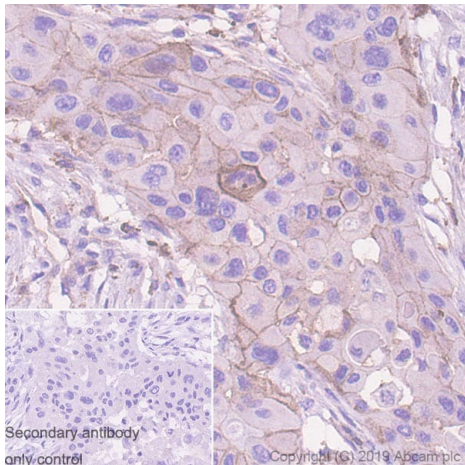
Blocking and dilution buffer: 5% NFDM/TBST.

Exposure times.

Lanes 1-2: 3 minutes

Lane 3: 48 seconds.

The expression profile/ molecular weight observed is consistent with what has been described in the literature (PMID: 28813417).

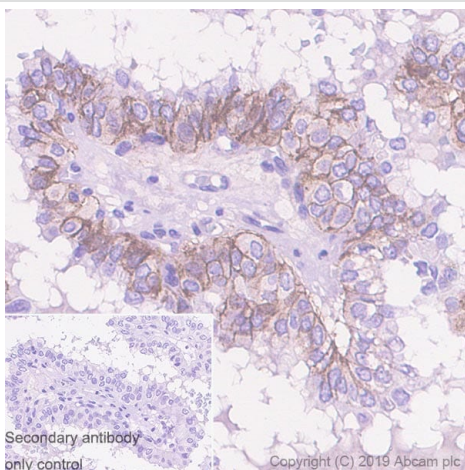


Immunohistochemistry (Formalin/PFA-fixed paraffin-embedded sections) - Anti-CMTM6 antibody [EPR23015-45] (ab264067)

Immunohistochemical analysis of paraffin-embedded Human pancreatic cancer tissue labeling CMTM6 with ab264067 at 1/2000 dilution (0.24 ug/ml) followed by a ready to use Rabbit specific IHC polymer detection kit HRP/DAB (**ab209101**). Membranous staining on human pancreatic cancer (PMID/ 28813417) The section was incubated with ab264067 for 30 mins at room temperature. The immunostaining was performed on a Leica Biosystems BOND® RX instrument Counterstained with Hematoxylin.

Secondary antibody only control/ Secondary antibody is a ready to use Rabbit specific IHC polymer detection kit HRP/DAB (**ab209101**).

Heat mediated antigen retrieval with Tris-EDTA buffer (pH 9.0, epitope retrieval solution 2) for 20 mins.

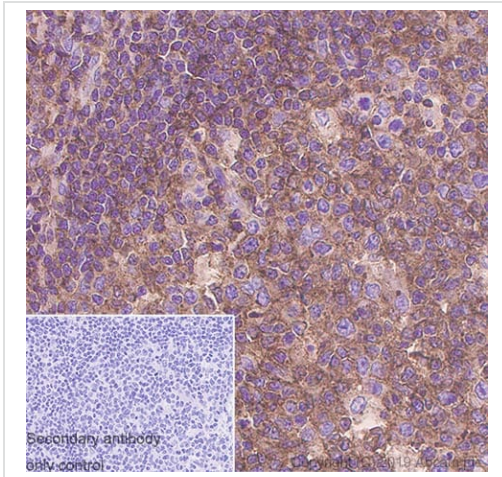


Immunohistochemistry (Formalin/PFA-fixed paraffin-embedded sections) - Anti-CMTM6 antibody [EPR23015-45] (ab264067)

Immunohistochemical analysis of paraffin-embedded Human thyroid cancer tissue labeling CMTM6 with ab264067 at 1/2000 dilution (0.24 ug/ml) followed by a ready to use Rabbit specific IHC polymer detection kit HRP/DAB (**ab209101**). Membranous staining on human thyroid cancer (PMID: 28813410) The section was incubated with ab264067 for 30 mins at room temperature. The immunostaining was performed on a Leica Biosystems BOND™ RX instrument Counterstained with Hematoxylin.

Secondary antibody only control/ Secondary antibody is a ready to use Rabbit specific IHC polymer detection kit HRP/DAB (**ab209101**).

Heat mediated antigen retrieval with Tris-EDTA buffer (pH 9.0, epitope retrieval solution 2) for 20 mins.

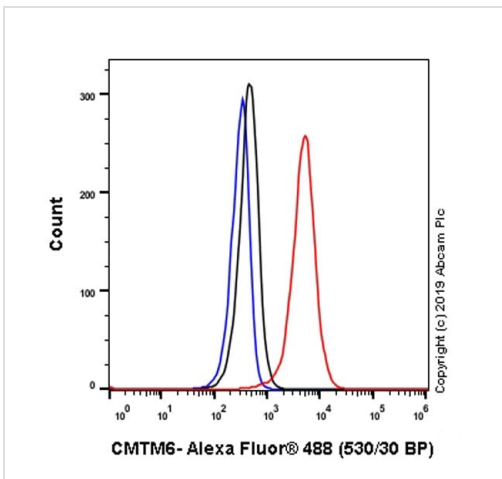


Immunohistochemistry (Formalin/PFA-fixed paraffin-embedded sections) - Anti-CMTM6 antibody [EPR23015-45] (ab264067)

Immunohistochemical analysis of paraffin-embedded Human tonsil tissue labeling CMTM6 with ab264067 at 1/2000 dilution (0.24 ug/ml) followed by a ready to use Rabbit specific IHC polymer detection kit HRP/DAB (**ab209101**). Positive staining on human tonsil. The section was incubated with ab264067 for 30 mins at room temperature. The immunostaining was performed on a Leica Biosystems BOND® RX instrument Counterstained with Hematoxylin.

Secondary antibody only control/ Secondary antibody is a ready to use Rabbit specific IHC polymer detection kit HRP/DAB (**ab209101**).

Heat mediated antigen retrieval with Tris-EDTA buffer (pH 9.0, epitope retrieval solution 2) for 20 mins.



Flow Cytometry (Intracellular) - Anti-CMTM6 antibody [EPR23015-45] (ab264067)

Intracellular flow cytometric analysis of 4% paraformaldehyde fixed, 90% methanol permeabilized MDA-MB-231 (human breast adenocarcinoma epithelial cell) cells labelling CMTM6 with ab264067 at 1/500 dilution (Red) compared with a Rabbit monoclonal IgG (**ab172730**) isotype control (black) and an unlabelled control (cells without incubation with primary antibody and secondary antibody) (Blue). A Goat anti rabbit IgG (Alexa Fluor® 488, **ab150077**) at 1/2000 dilution was used as the secondary antibody.

Why choose a recombinant antibody?



Research with confidence
Consistent and reproducible results



Long-term and scalable supply
Recombinant technology



Success from the first experiment
Confirmed specificity



Ethical standards compliant
Animal-free production

Anti-CMTM6 antibody [EPR23015-45] (ab264067)

Please note: All products are "FOR RESEARCH USE ONLY. NOT FOR USE IN DIAGNOSTIC PROCEDURES"

Our Abpromise to you: Quality guaranteed and expert technical support

- Replacement or refund for products not performing as stated on the datasheet
- Valid for 12 months from date of delivery
- Response to your inquiry within 24 hours
- We provide support in Chinese, English, French, German, Japanese and Spanish
- Extensive multi-media technical resources to help you
- We investigate all quality concerns to ensure our products perform to the highest standards

If the product does not perform as described on this datasheet, we will offer a refund or replacement. For full details of the Abpromise, please visit <https://www.abcam.com/abpromise> or contact our technical team.

Terms and conditions

- Guarantee only valid for products bought direct from Abcam or one of our authorized distributors