

Product datasheet

Anti-CNDP1/CN1 antibody ab155315

2 Images

Overview

Product name	Anti-CNDP1/CN1 antibody
Description	Rabbit polyclonal to CNDP1/CN1
Host species	Rabbit
Tested applications	Suitable for: WB, IHC-P
Species reactivity	Reacts with: Human
Immunogen	Recombinant fragment corresponding to Human CNDP1/CN1 aa 185-448. Database link: Q96KN2
Positive control	293T and A431 whole cell lysates; Human Gastric carcinoma tissue.
General notes	<p>The Life Science industry has been in the grips of a reproducibility crisis for a number of years. Abcam is leading the way in addressing this with our range of recombinant monoclonal antibodies and knockout edited cell lines for gold-standard validation. Please check that this product meets your needs before purchasing.</p> <p>If you have any questions, special requirements or concerns, please send us an inquiry and/or contact our Support team ahead of purchase. Recommended alternatives for this product can be found below, along with publications, customer reviews and Q&As</p>

Properties

Form	Liquid
Storage instructions	Shipped at 4°C. Upon delivery aliquot. Store at -20°C or -80°C. Avoid freeze / thaw cycle.
Storage buffer	pH: 7.00 Preservative: 0.01% Thimerosal (merthiolate) Constituents: 1.21% Tris, 0.75% Glycine, 20% Glycerol (glycerin, glycerine)
Purity	Immunogen affinity purified
Clonality	Polyclonal
Isotype	IgG

Applications

The Abpromise guarantee Our **Abpromise guarantee** covers the use of ab155315 in the following tested applications.

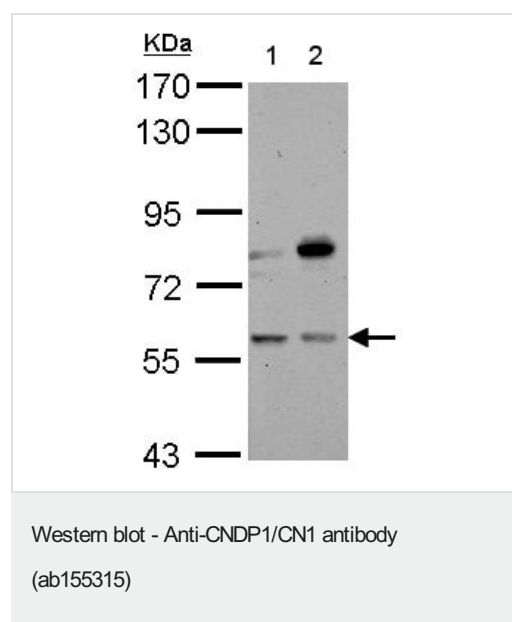
The application notes include recommended starting dilutions; optimal dilutions/concentrations should be determined by the end user.

Application	Abreviews	Notes
WB		1/500 - 1/3000. Predicted molecular weight: 57 kDa.
IHC-P		1/100 - 1/1000.

Target

Tissue specificity	Found in serum and adult nervous central system. Absent in serum from patients with homocarnosinosis.
Sequence similarities	Belongs to the peptidase M20A family.
Cellular localization	Secreted.

Images



All lanes : Anti-CNDP1/CN1 antibody (ab155315) at 1/1000 dilution

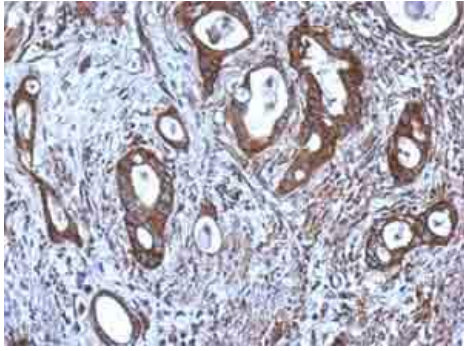
Lane 1 : 293T whole cell lysate

Lane 2 : A431 whole cell lysate

Lysates/proteins at 30 µg per lane.

Predicted band size: 57 kDa

7.5% SDS PAGE



Immunohistochemical analysis of paraffin-embedded Human Gastric carcinoma tissue, labeling CNDP1/CN1 with ab155315 at 1/500 dilution.

Immunohistochemistry (Formalin/PFA-fixed paraffin-embedded sections) - Anti-CNDP1/CN1 antibody (ab155315)

Please note: All products are "FOR RESEARCH USE ONLY. NOT FOR USE IN DIAGNOSTIC PROCEDURES"

Our Abpromise to you: Quality guaranteed and expert technical support

- Replacement or refund for products not performing as stated on the datasheet
- Valid for 12 months from date of delivery
- Response to your inquiry within 24 hours
- We provide support in Chinese, English, French, German, Japanese and Spanish
- Extensive multi-media technical resources to help you
- We investigate all quality concerns to ensure our products perform to the highest standards

If the product does not perform as described on this datasheet, we will offer a refund or replacement. For full details of the Abpromise, please visit <https://www.abcam.com/abpromise> or contact our technical team.

Terms and conditions

- Guarantee only valid for products bought direct from Abcam or one of our authorized distributors