


Product datasheet

Anti-CNPase antibody ab227218

[3 References](#) [6 Images](#)

Overview

Product name	Anti-CNPase antibody
Description	Rabbit polyclonal to CNPase
Host species	Rabbit
Tested applications	Suitable for: IHC-P, WB, IHC-Fr
Species reactivity	Reacts with: Mouse, Rat, Human Predicted to work with: Rhesus monkey 
Immunogen	Recombinant fragment within Human CNPase (internal sequence). The exact sequence is proprietary. Database link: P09543
Positive control	WB: HeLa cell extract; MOLT-4 whole cell lysate; Mouse and rat brain tissue extracts. IHC-P: U87 xenograft tissue. IHC-Fr: Adult mouse cerebellum and hippocampus tissues.
General notes	<p>The Life Science industry has been in the grips of a reproducibility crisis for a number of years. Abcam is leading the way in addressing this with our range of recombinant monoclonal antibodies and knockout edited cell lines for gold-standard validation. Please check that this product meets your needs before purchasing.</p> <p>If you have any questions, special requirements or concerns, please send us an inquiry and/or contact our Support team ahead of purchase. Recommended alternatives for this product can be found below, along with publications, customer reviews and Q&As</p>

Properties

Form	Liquid
Storage instructions	Shipped at 4°C. Store at +4°C short term (1-2 weeks). Upon delivery aliquot. Store at -20°C long term. Avoid freeze / thaw cycle.
Storage buffer	pH: 7.00 Preservative: 0.01% Thimerosal (merthiolate) Constituents: 1.21% Tris, 0.75% Glycine, 10% Glycerol (glycerin, glycerine)
Purity	Immunogen affinity purified
Clonality	Polyclonal
Isotype	IgG

Applications

The Abpromise guarantee

Our **Abpromise guarantee** covers the use of ab227218 in the following tested applications.

The application notes include recommended starting dilutions; optimal dilutions/concentrations should be determined by the end user.

Application	Abreviews	Notes
IHC-P		1/100 - 1/1000.
WB		1/500 - 1/10000. Predicted molecular weight: 45,48 kDa.
IHC-Fr		1/100 - 1/1000.

Target

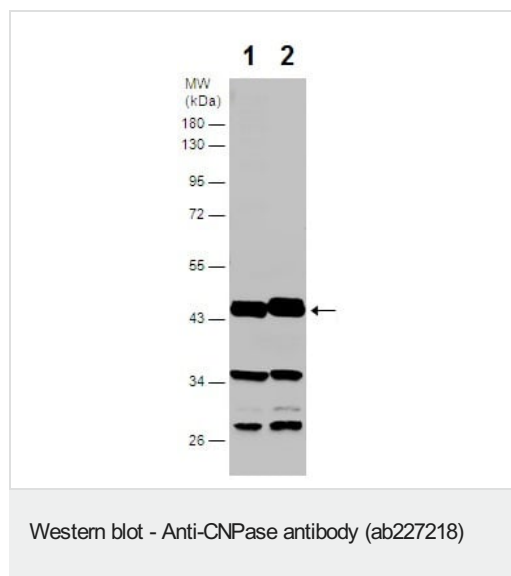
Sequence similarities

Belongs to the cyclic nucleotide phosphodiesterase family.

Cellular localization

Membrane. Melanosome. Firmly bound to membrane structures of brain white matter. Identified by mass spectrometry in melanosome fractions from stage I to stage IV.

Images



All lanes : Anti-CNPase antibody (ab227218) at 1/5000 dilution

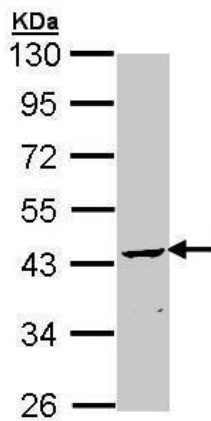
Lane 1 : Mouse brain tissue extract

Lane 2 : Rat brain tissue extract

Lysates/proteins at 50 µg per lane.

Predicted band size: 45,48 kDa

10% SDS-PAGE gel.

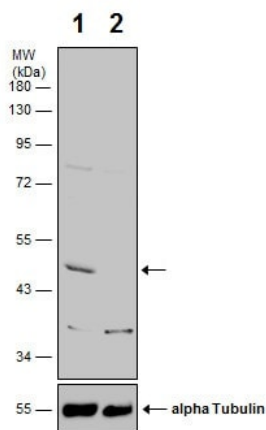


Western blot - Anti-CNPase antibody (ab227218)

Anti-CNPase antibody (ab227218) at 1/1000 dilution + MOLT-4 (human lymphoblastic leukemia cell line) whole cell lysate at 30 µg

Predicted band size: 45,48 kDa

10% SDS-PAGE gel.



Western blot - Anti-CNPase antibody (ab227218)

All lanes : Anti-CNPase antibody (ab227218) at 1/500 dilution

Lane 1 : WT HeLa (human epithelial cell line from cervix adenocarcinoma) cell extract

Lane 2 : CNPase knockout HeLa (human epithelial cell line from cervix adenocarcinoma) cell extract

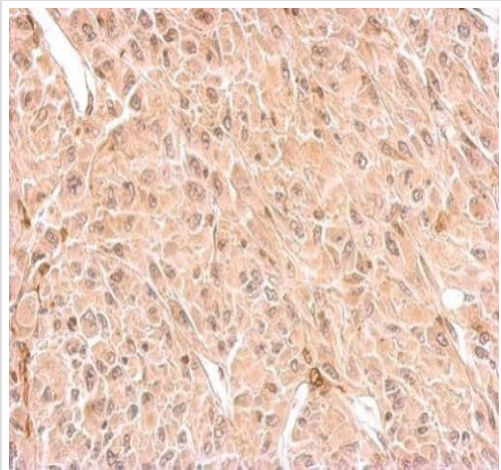
Lysates/proteins at 30 µg per lane.

Secondary

All lanes : HRP-conjugated anti-rabbit IgG

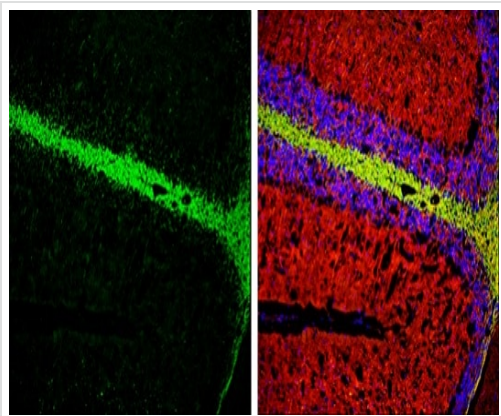
Predicted band size: 45,48 kDa

10% SDS-PAGE gel.



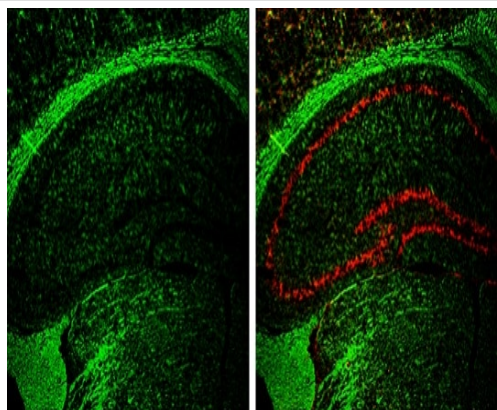
Immunohistochemistry (Formalin/PFA-fixed paraffin-embedded sections) - Anti-CNPase antibody (ab227218)

Paraffin-embedded U87 (human) xenograft tissue stained for CNPase using ab227218 at 1/500 dilution in immunohistochemical analysis.



Immunohistochemistry (Frozen sections) - Anti-CNPase antibody (ab227218)

Frozen sections of adult mouse cerebellum tissue stained for CNPase (green) using ab227218 at 1/250 dilution in immunohistochemical analysis. Counterstain: beta Tubulin 3/ TUJ1, stained by beta Tubulin 3/ TUJ1 antibody at 1/500 dilution (red). Nuclear Counterstain: Fluoroshield with DAPI (blue).



Immunohistochemistry (Frozen sections) - Anti-CNPase antibody (ab227218)

Frozen sections of adult mouse hippocampus tissue stained for CNPase (green) using ab227218 at 1/250 dilution in immunohistochemical analysis. Counterstain: NeuN (red), stained by NeuN antibody at 1/500 dilution.

Please note: All products are "FOR RESEARCH USE ONLY. NOT FOR USE IN DIAGNOSTIC PROCEDURES"

Our Abpromise to you: Quality guaranteed and expert technical support

- Replacement or refund for products not performing as stated on the datasheet
- Valid for 12 months from date of delivery
- Response to your inquiry within 24 hours
- We provide support in Chinese, English, French, German, Japanese and Spanish
- Extensive multi-media technical resources to help you
- We investigate all quality concerns to ensure our products perform to the highest standards

If the product does not perform as described on this datasheet, we will offer a refund or replacement. For full details of the Abpromise, please visit <https://www.abcam.com/abpromise> or contact our technical team.

Terms and conditions

- Guarantee only valid for products bought direct from Abcam or one of our authorized distributors