

Product datasheet

Anti-CNTF antibody ab28951

[1 References](#) [1 Image](#)

Overview

Product name	Anti-CNTF antibody
Description	Chicken polyclonal to CNTF
Host species	Chicken
Tested applications	Suitable for: WB
Species reactivity	Reacts with: Mouse
Immunogen	Two peptides for human CNTF were mixed and used as immunogens. Both peptides are highly conserved against human and mouse sequences.
General notes	<p>The Life Science industry has been in the grips of a reproducibility crisis for a number of years. Abcam is leading the way in addressing this with our range of recombinant monoclonal antibodies and knockout edited cell lines for gold-standard validation. Please check that this product meets your needs before purchasing.</p> <p>If you have any questions, special requirements or concerns, please send us an inquiry and/or contact our Support team ahead of purchase. Recommended alternatives for this product can be found below, along with publications, customer reviews and Q&As</p>

Properties

Form	Liquid
Storage instructions	Shipped at 4°C. Store at +4°C short term (1-2 weeks). Upon delivery aliquot. Store at -20°C long term.
Storage buffer	Preservative: 0.02% Sodium azide Constituent: PBS
Purification notes	This chicken polyclonal antibody is a crude IgY preparation from egg yolks using a precipitation method (PEG, Polyethylene Glycol).
Clonality	Polyclonal
Isotype	IgY

Applications

The Abpromise guarantee Our **Abpromise guarantee** covers the use of ab28951 in the following tested applications.

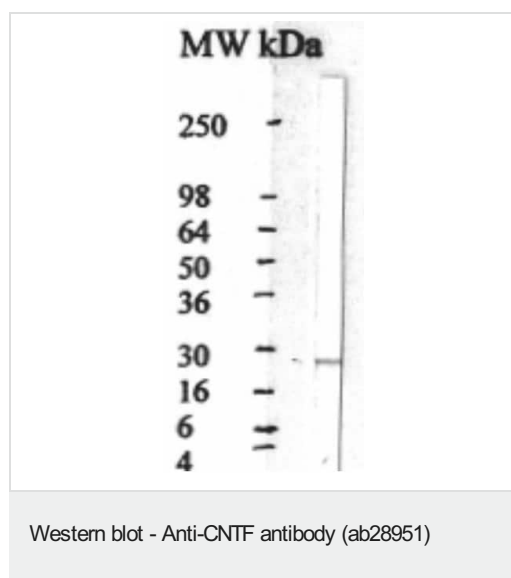
The application notes include recommended starting dilutions; optimal dilutions/concentrations should be determined by the end user.

Application	Abreviews	Notes
WB		1/500 - 1/2000. Predicted molecular weight: 24 kDa.

Target

Function	CNTF is a survival factor for various neuronal cell types. Seems to prevent the degeneration of motor axons after axotomy.
Tissue specificity	Nervous system.
Sequence similarities	Belongs to the CNTF family.
Cellular localization	Cytoplasm.

Images



Anti-CNTF antibody (ab28951) at 1/1000 dilution + Mouse brain extract at 40ug total protein.

Predicted band size: 24 kDa

Please note: All products are "FOR RESEARCH USE ONLY. NOT FOR USE IN DIAGNOSTIC PROCEDURES"

Our Abpromise to you: Quality guaranteed and expert technical support

- Replacement or refund for products not performing as stated on the datasheet
- Valid for 12 months from date of delivery
- Response to your inquiry within 24 hours
- We provide support in Chinese, English, French, German, Japanese and Spanish
- Extensive multi-media technical resources to help you
- We investigate all quality concerns to ensure our products perform to the highest standards

If the product does not perform as described on this datasheet, we will offer a refund or replacement. For full details of the Abpromise, please visit <https://www.abcam.com/abpromise> or contact our technical team.

Terms and conditions

- Guarantee only valid for products bought direct from Abcam or one of our authorized distributors