

## Product datasheet

### Anti-CNTFR antibody [MM0190-10L29] $\alpha$ b89333

★★★★★ [1 Abreviews](#) [3 References](#) [2 Images](#)

#### Overview

<b>Product name</b>	Anti-CNTFR antibody [MM0190-10L29]
<b>Description</b>	Mouse monoclonal [MM0190-10L29] to CNTFR
<b>Host species</b>	Mouse
<b>Tested applications</b>	<b>Suitable for:</b> Flow Cyt, IHC-P
<b>Species reactivity</b>	<b>Reacts with:</b> Human
<b>Immunogen</b>	Recombinant full length protein corresponding to Human CNTFR.
<b>General notes</b>	<p>The Life Science industry has been in the grips of a reproducibility crisis for a number of years. Abcam is leading the way in addressing this with our range of recombinant monoclonal antibodies and knockout edited cell lines for gold-standard validation. Please check that this product meets your needs before purchasing.</p> <p>If you have any questions, special requirements or concerns, please send us an inquiry and/or contact our Support team ahead of purchase. Recommended alternatives for this product can be found below, along with publications, customer reviews and Q&amp;As</p>

#### Properties

<b>Form</b>	Liquid
<b>Storage instructions</b>	Shipped at 4°C. Upon delivery aliquot and store at -20°C or -80°C. Avoid repeated freeze / thaw cycles.
<b>Storage buffer</b>	Constituent: PBS
<b>Purity</b>	Protein G purified
<b>Clonality</b>	Monoclonal
<b>Clone number</b>	MM0190-10L29
<b>Isotype</b>	IgG2

#### Applications

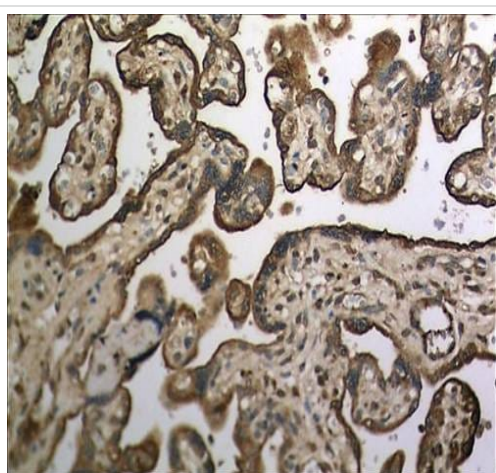
**The Abpromise guarantee** Our **Abpromise guarantee** covers the use of ab89333 in the following tested applications. The application notes include recommended starting dilutions; optimal dilutions/concentrations should be determined by the end user.

Application	Abreviews	Notes
Flow Cyt		Use 0.5µg for 10 <sup>6</sup> cells. <b>ab18414</b> - Mouse monoclonal IgG2a, is suitable for use as an isotype control with this antibody.
IHC-P	★★★★★ (1)	Use a concentration of 15 µg/ml.

## Target

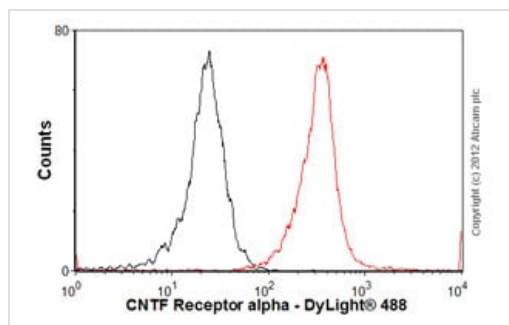
<b>Function</b>	Binds to CNTF. The alpha subunit provides the receptor specificity.
<b>Tissue specificity</b>	Nervous system and skeletal muscle.
<b>Sequence similarities</b>	Belongs to the type I cytokine receptor family. Type 3 subfamily. Contains 2 fibronectin type-III domains. Contains 1 Ig-like C2-type (immunoglobulin-like) domain.
<b>Domain</b>	The WSXWS motif appears to be necessary for proper protein folding and thereby efficient intracellular transport and cell-surface receptor binding.
<b>Cellular localization</b>	Cell membrane.

## Images



Immunohistochemistry (Formalin/PFA-fixed paraffin-embedded sections) analysis of human placental tissue section (4µm) labelling CNTFR with ab89333. Tissue was treated with 15µg/ml Protienase K for antigen retrieval and fixed with 4% PFA. A HRP-conjugated anti-mouse IgG was used as the secondary antibody (30 minutes at room temperature) followed by DAB color development.

Immunohistochemistry (Formalin/PFA-fixed paraffin-embedded sections) - Anti-CNTFR antibody  
[MM0190-10L29] (ab89333)



Flow Cytometry - Anti-CNTFR antibody [MM0190-10L29] (ab89333)

Overlay histogram showing SH-SY5Y cells stained with ab89333 (red line). The cells were fixed with 80% methanol (5 min) and incubated in 1x PBS / 10% normal goat serum / 0.3M glycine to block non-specific protein-protein interactions. The cells were then incubated with the antibody (ab89333, 0.5µg/1x10<sup>6</sup> cells ) for 30 min at 22°C. The secondary antibody used was DyLight® 488 goat anti-mouse IgG (H+L) (**ab96879**) at 1/500 dilution for 30 min at 22°C. Isotype control antibody (black line) was mouse IgG2 (1µg/1x10<sup>6</sup> cells) used under the same conditions. Acquisition of >5,000 events was performed.

Please note that Abcam do not have any data for use of this antibody on non-fixed cells. We welcome any customer feedback.

**Please note:** All products are "FOR RESEARCH USE ONLY. NOT FOR USE IN DIAGNOSTIC PROCEDURES"

### Our Abpromise to you: Quality guaranteed and expert technical support

- Replacement or refund for products not performing as stated on the datasheet
- Valid for 12 months from date of delivery
- Response to your inquiry within 24 hours
- We provide support in Chinese, English, French, German, Japanese and Spanish
- Extensive multi-media technical resources to help you
- We investigate all quality concerns to ensure our products perform to the highest standards

If the product does not perform as described on this datasheet, we will offer a refund or replacement. For full details of the Abpromise, please visit <https://www.abcam.com/abpromise> or contact our technical team.

### Terms and conditions

- Guarantee only valid for products bought direct from Abcam or one of our authorized distributors