


Product datasheet

Anti-Cofilin antibody ab227299

[7 Images](#)

Overview

Product name	Anti-Cofilin antibody
Description	Rabbit polyclonal to Cofilin
Host species	Rabbit
Tested applications	Suitable for: IHC-P, WB, ICC/IF
Species reactivity	Reacts with: Mouse, Rat, Human Predicted to work with: Sheep, Cow, Pig, Rhesus monkey 
Immunogen	Recombinant fragment within Human Cofilin (internal sequence). The exact sequence is proprietary. Database link: P23528
Positive control	WB: HEK-293T whole cell extract; A431, PC-12, Rat2 and NIH/3T3 whole cell lysates. ICC/IF: HeLa cells. IHC-P: HBL435 xenograft tissue.
General notes	<p>The Life Science industry has been in the grips of a reproducibility crisis for a number of years. Abcam is leading the way in addressing this with our range of recombinant monoclonal antibodies and knockout edited cell lines for gold-standard validation. Please check that this product meets your needs before purchasing.</p> <p>If you have any questions, special requirements or concerns, please send us an inquiry and/or contact our Support team ahead of purchase. Recommended alternatives for this product can be found below, along with publications, customer reviews and Q&As</p>

Properties

Form	Liquid
Storage instructions	Shipped at 4°C. Store at +4°C short term (1-2 weeks). Upon delivery aliquot. Store at -20°C long term. Avoid freeze / thaw cycle.
Storage buffer	pH: 7.00 Preservative: 0.01% Thimerosal (merthiolate) Constituents: 78.99% PBS, 1% BSA, 20% Glycerol (glycerin, glycerine)
Purity	Immunogen affinity purified
Clonality	Polyclonal
Isotype	IgG

Applications

The Abpromise guarantee

Our **Abpromise guarantee** covers the use of ab227299 in the following tested applications.

The application notes include recommended starting dilutions; optimal dilutions/concentrations should be determined by the end user.

Application	Abreviews	Notes
IHC-P		1/100 - 1/1000.
WB		1/500 - 1/3000. Predicted molecular weight: 19 kDa.
ICC/IF		1/100 - 1/1000.

Target

Function

Controls reversibly actin polymerization and depolymerization in a pH-sensitive manner. It has the ability to bind G- and F-actin in a 1:1 ratio of cofilin to actin. It is the major component of intranuclear and cytoplasmic actin rods.

Tissue specificity

Widely distributed in various tissues.

Sequence similarities

Belongs to the actin-binding proteins ADF family.
Contains 1 ADF-H domain.

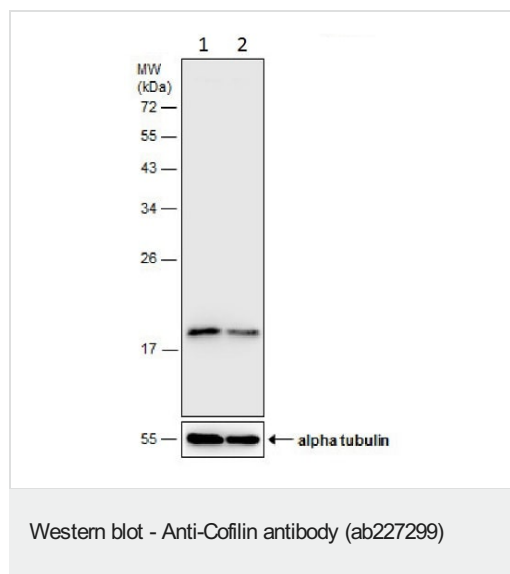
Post-translational modifications

Phosphorylated on Ser-3 in resting cells.

Cellular localization

Nucleus matrix. Cytoplasm > cytoskeleton. Almost completely in nucleus in cells exposed to heat shock or 10% dimethyl sulfoxide.

Images



All lanes : Anti-Cofilin antibody (ab227299) at 1/1000 dilution

Lane 1 : Non-transfected HEK-293T (human epithelial cell line from embryonic kidney transformed with large T antigen) whole cell extract

Lane 2 : Cofilin shRNA-transfected HEK-293T (human epithelial cell line from embryonic kidney transformed with large T antigen) whole cell extract

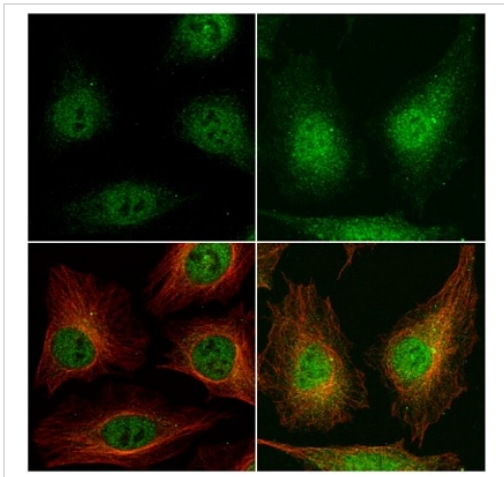
Lysates/proteins at 30 µg per lane.

Secondary

All lanes : HRP-conjugated anti-rabbit IgG

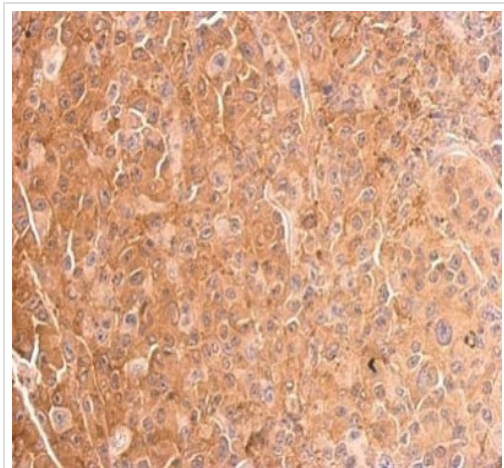
Predicted band size: 19 kDa

12% SDS-PAGE gel.



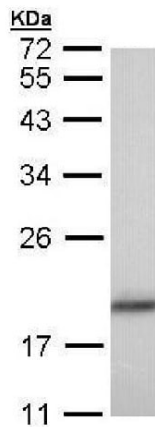
Immunocytochemistry/ Immunofluorescence - Anti-Cofilin antibody (ab227299)

4% paraformaldehyde-fixed HeLa (human epithelial cell line from cervix adenocarcinoma) cells stained for Cofilin (green) using ab227299 at 1/1000 dilution in ICC/IF. Untreated HeLa cells (left images) and HeLa cells treated with 0.012 N NaOH/PBS for 1 minute (right images). Counterstain: alpha Tubulin was labeled with an anti-alpha Tubulin antibody (red) at 1/1000 dilution.



Immunohistochemistry (Formalin/PFA-fixed paraffin-embedded sections) - Anti-Cofilin antibody (ab227299)

Paraffin-embedded HBL435 xenograft tissue stained for Cofilin using ab227299 at 1/500 dilution in immunohistochemical analysis.



Western blot - Anti-Cofilin antibody (ab227299)

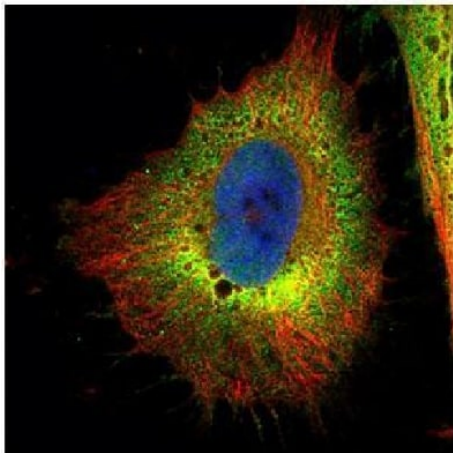
Anti-Cofilin antibody (ab227299) at 1/1000 dilution + A431 (human epidermoid carcinoma cell line) whole cell lysate at 30 μ g

Secondary

HRP-conjugated anti-rabbit IgG

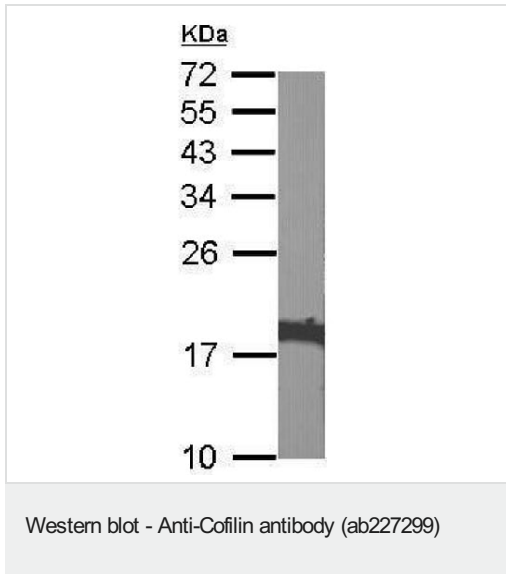
Predicted band size: 19 kDa

12% SDS-PAGE gel.



Immunocytochemistry/ Immunofluorescence - Anti-Cofilin antibody (ab227299)

Paraformaldehyde-fixed HeLa (human epithelial cell line from cervix adenocarcinoma) cells stained for Cofilin (green) using ab227299 at 1/500 dilution in ICC/IF. Counterstain: alpha Tubulin was labeled with an anti-alpha Tubulin antibody (red) at 1/2000 dilution.



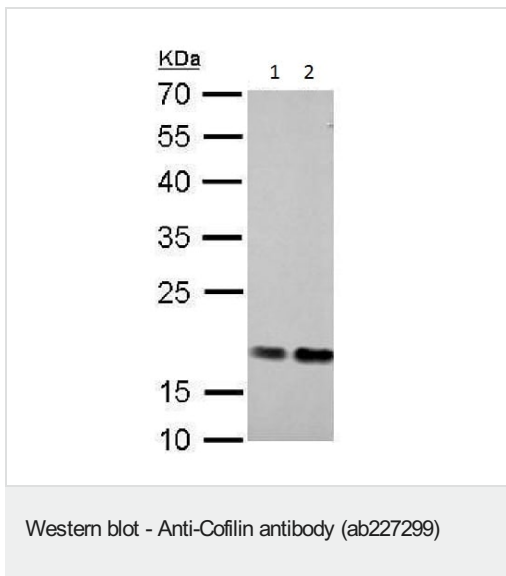
Anti-Cofilin antibody (ab227299) at 1/1000 dilution + NIH/3T3 (mouse embryo fibroblast cell line) whole cell lysate at 30 µg

Secondary

HRP-conjugated anti-rabbit IgG

Predicted band size: 19 kDa

12% SDS-PAGE gel.



All lanes : Anti-Cofilin antibody (ab227299) at 1/1000 dilution

Lane 1 : PC-12 (rat adrenal gland pheochromocytoma cell line) whole cell extract

Lane 2 : Rat2 (rat fibroblast cell line) whole cell extract

Lysates/proteins at 30 µg per lane.

Secondary

All lanes : HRP-conjugated anti-rabbit IgG

Predicted band size: 19 kDa

12% SDS-PAGE gel.

Please note: All products are "FOR RESEARCH USE ONLY. NOT FOR USE IN DIAGNOSTIC PROCEDURES"

Our Abpromise to you: Quality guaranteed and expert technical support

- Replacement or refund for products not performing as stated on the datasheet
- Valid for 12 months from date of delivery
- Response to your inquiry within 24 hours

- We provide support in Chinese, English, French, German, Japanese and Spanish
- Extensive multi-media technical resources to help you
- We investigate all quality concerns to ensure our products perform to the highest standards

If the product does not perform as described on this datasheet, we will offer a refund or replacement. For full details of the Abpromise, please visit <https://www.abcam.com/abpromise> or contact our technical team.

Terms and conditions

- Guarantee only valid for products bought direct from Abcam or one of our authorized distributors