

### Anti-Cofilin antibody ab29038

[3 References](#) [1 Image](#)

#### Overview

<b>Product name</b>	Anti-Cofilin antibody
<b>Description</b>	Rabbit polyclonal to Cofilin
<b>Host species</b>	Rabbit
<b>Specificity</b>	ab29038 recognises Cofilin 1. The immunogen sequence has only 3 amino acid differences from human Cofilin 2.
<b>Tested applications</b>	<b>Suitable for:</b> WB
<b>Species reactivity</b>	<b>Reacts with:</b> Human
<b>Immunogen</b>	A synthetic peptide (conjugated to KLH) corresponding to amino acid residues at the N terminus of human Cofilin 1.
<b>General notes</b>	<p>The Life Science industry has been in the grips of a reproducibility crisis for a number of years. Abcam is leading the way in addressing this with our range of recombinant monoclonal antibodies and knockout edited cell lines for gold-standard validation. Please check that this product meets your needs before purchasing.</p> <p>If you have any questions, special requirements or concerns, please send us an inquiry and/or contact our Support team ahead of purchase. Recommended alternatives for this product can be found below, along with publications, customer reviews and Q&amp;As</p>

#### Properties

<b>Form</b>	Liquid
<b>Storage instructions</b>	Shipped at 4°C. Upon delivery aliquot and store at -20°C. Avoid freeze / thaw cycles.
<b>Storage buffer</b>	Preservative: 0.05% Sodium azide Constituents: PBS, 50% Glycerol, 0.1% BSA
<b>Purity</b>	Immunogen affinity purified
<b>Clonality</b>	Polyclonal
<b>Isotype</b>	IgG

#### Applications

**The Abpromise guarantee** Our **Abpromise guarantee** covers the use of ab29038 in the following tested applications.

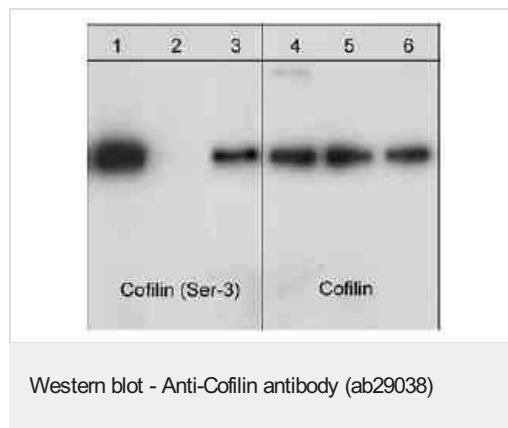
The application notes include recommended starting dilutions; optimal dilutions/concentrations should be determined by the end user.

Application	Abreviews	Notes
WB		1/1000. Predicted molecular weight: 18 kDa.

## Target

<b>Function</b>	Controls reversibly actin polymerization and depolymerization in a pH-sensitive manner. It has the ability to bind G- and F-actin in a 1:1 ratio of cofilin to actin. It is the major component of intranuclear and cytoplasmic actin rods.
<b>Tissue specificity</b>	Widely distributed in various tissues.
<b>Sequence similarities</b>	Belongs to the actin-binding proteins ADF family. Contains 1 ADF-H domain.
<b>Post-translational modifications</b>	Phosphorylated on Ser-3 in resting cells.
<b>Cellular localization</b>	Nucleus matrix. Cytoplasm > cytoskeleton. Almost completely in nucleus in cells exposed to heat shock or 10% dimethyl sulfoxide.

## Images



Western blot of jurkat cells expressing cofilin 1. Blots were treated with (lanes 2, 3, 5 & 6) or without (lanes 1 & 4) lambda phosphatase for 1 hr at 37 degrees C. In lanes 3 & 6, phosphatase treatments were performed in the presence of phospho-cofilin 1 (Ser-3) peptide. Blots were probed with anti-phospho-Cofilin 1 (Ser-3) (lanes 1-3;) or anti-Cofilin 1 (lanes 4-6; ab29038). Phosphatase treatment removes Ser-3 phosphorylation of Cofilin, but this phosphatase activity is reduced in the presence of peptide.

**Please note:** All products are "FOR RESEARCH USE ONLY. NOT FOR USE IN DIAGNOSTIC PROCEDURES"

## Our Abpromise to you: Quality guaranteed and expert technical support

- Replacement or refund for products not performing as stated on the datasheet
- Valid for 12 months from date of delivery
- Response to your inquiry within 24 hours
- We provide support in Chinese, English, French, German, Japanese and Spanish
- Extensive multi-media technical resources to help you
- We investigate all quality concerns to ensure our products perform to the highest standards

If the product does not perform as described on this datasheet, we will offer a refund or replacement. For full details of the Abpromise,

please visit <https://www.abcam.com/abpromise> or contact our technical team.

#### **Terms and conditions**

---

- Guarantee only valid for products bought direct from Abcam or one of our authorized distributors