


Product datasheet

Anti-COL23A1 antibody [EPR6066(2)(B)] ab168356

Recombinant RabMAb

4 Images

Overview

Product name	Anti-COL23A1 antibody [EPR6066(2)(B)]
Description	Rabbit monoclonal [EPR6066(2)(B)] to COL23A1
Host species	Rabbit
Tested applications	Suitable for: WB Unsuitable for: Flow Cyt, ICC/IF or IHC-P
Species reactivity	Reacts with: Mouse, Human Predicted to work with: Rat 
Immunogen	Synthetic peptide corresponding to Human COL23A1.
Positive control	Fetal brain, fetal lung, NCI-H460, HepG2 and mouse brain lysates. Immunoprecipitation pellet from HepG2 cell lysate.
General notes	<p>This product is a recombinant monoclonal antibody, which offers several advantages including:</p> <ul style="list-style-type: none"> - High batch-to-batch consistency and reproducibility - Improved sensitivity and specificity - Long-term security of supply - Animal-free production <p>For more information see here.</p> <p>Our RabMAb[®] technology is a patented hybridoma-based technology for making rabbit monoclonal antibodies. For details on our patents, please refer to RabMAb[®] patents.</p>

Properties

Form	Liquid
Storage instructions	Shipped at 4°C. Store at +4°C short term (1-2 weeks). Upon delivery aliquot. Store at -20°C long term.
Storage buffer	pH: 7.2 Preservative: 0.01% Sodium azide Constituents: 9% PBS, 40% Glycerol (glycerin, glycerine), 0.05% BSA, 50% Tissue culture supernatant
Purity	Tissue culture supernatant
Clonality	Monoclonal

Clone number EPR6066(2)(B)
Isotype IgG

Applications

The Abpromise guarantee Our **Abpromise guarantee** covers the use of ab168356 in the following tested applications. The application notes include recommended starting dilutions; optimal dilutions/concentrations should be determined by the end user.

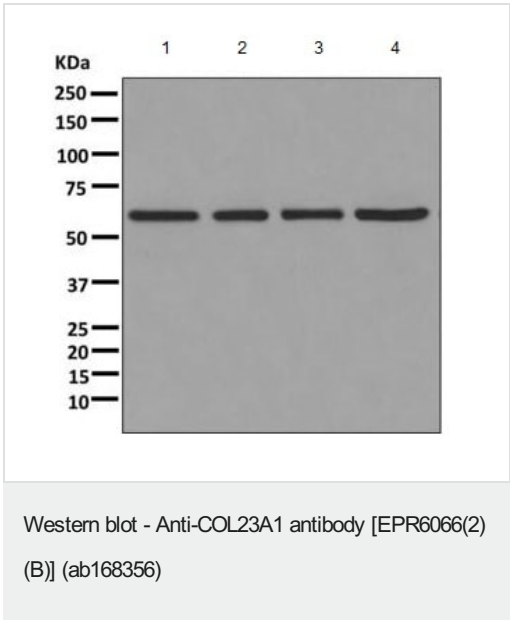
Application	Abreviews	Notes
WB		1/1000 - 1/10000. Predicted molecular weight: 52 kDa.

Application notes Is unsuitable for Flow Cyt, ICC/IF or IHC-P.

Target

Cellular localization Cell membrane; Single-pass type II membrane protein; Extracellular side

Images



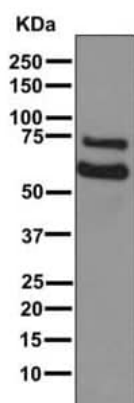
All lanes : Anti-COL23A1 antibody [EPR6066(2)(B)] (ab168356) at 1/1000 dilution

- Lane 1 :** Fetal brain tissue lysate
- Lane 2 :** Fetal lung tissue lysate
- Lane 3 :** NCI-H460 cell lysate
- Lane 4 :** HepG2 cell lysate

Lysates/proteins at 10 µg per lane.

Secondary
All lanes : HRP labeled goat anti-rabbit at 1/2000 dilution

Predicted band size: 52 kDa



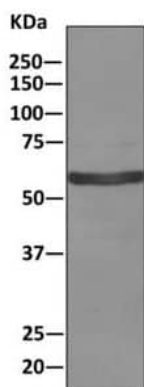
Western blot - Anti-COL23A1 antibody [EPR6066(2)
(B)] (ab168356)

Anti-COL23A1 antibody [EPR6066(2)(B)] (ab168356) at 1/1000
dilution + mouse brain lysate at 10 µg

Secondary

HRP labeled goat anti-rabbit at 1/2000 dilution

Predicted band size: 52 kDa



Western blot - Anti-COL23A1 antibody [EPR6066(2)
(B)] (ab168356)





Anti-COL23A1 antibody [EPR6066(2)(B)] (ab168356) at 1/1000
dilution + immunoprecipitation pellet from HepG2 cell lysate

Secondary

HRP-conjugated anti-rabbit IgG preferentially detecting the non-
reduced form of rabbit IgG

Predicted band size: 52 kDa

Why choose a recombinant antibody?

 <p>Research with confidence Consistent and reproducible results</p>	 <p>Long-term and scalable supply Recombinant technology</p>
 <p>Success from the first experiment Confirmed specificity</p>	 <p>Ethical standards compliant Animal-free production</p>

Anti-COL23A1 antibody [EPR6066(2)(B)] (ab168356)

Please note: All products are "FOR RESEARCH USE ONLY. NOT FOR USE IN DIAGNOSTIC PROCEDURES"

Our Abpromise to you: Quality guaranteed and expert technical support

- Replacement or refund for products not performing as stated on the datasheet
- Valid for 12 months from date of delivery
- Response to your inquiry within 24 hours
- We provide support in Chinese, English, French, German, Japanese and Spanish
- Extensive multi-media technical resources to help you
- We investigate all quality concerns to ensure our products perform to the highest standards

If the product does not perform as described on this datasheet, we will offer a refund or replacement. For full details of the Abpromise, please visit <https://www.abcam.com/abpromise> or contact our technical team.

Terms and conditions

- Guarantee only valid for products bought direct from Abcam or one of our authorized distributors