




Product datasheet

Anti-COLEC10 antibody ab213156

2 Images

Overview

| | |
|----------------------------|---|
| Product name | Anti-COLEC10 antibody |
| Description | Rabbit polyclonal to COLEC10 |
| Host species | Rabbit |
| Tested applications | Suitable for: IHC-P |
| Species reactivity | Reacts with: Rat Predicted to work with: Mouse, Human  |
| Immunogen | <p>Synthetic peptide within Human COLEC10 aa 100-200 conjugated to keyhole limpet haemocyanin. The exact immunogen sequence used to generate this antibody is proprietary information. If additional detail on the immunogen is needed to determine the suitability of the antibody for your needs, please contact our Scientific Support team to discuss your requirements.</p> <p>Database link: Q9Y6Z7</p> <div>  Run BLAST with  Run BLAST with </div> |
| Positive control | Rat liver and rat colitis tissues. |
| General notes | <p>The Life Science industry has been in the grips of a reproducibility crisis for a number of years. Abcam is leading the way in addressing this with our range of recombinant monoclonal antibodies and knockout edited cell lines for gold-standard validation. Please check that this product meets your needs before purchasing.</p> <p>If you have any questions, special requirements or concerns, please send us an inquiry and/or contact our Support team ahead of purchase. Recommended alternatives for this product can be found below, along with publications, customer reviews and Q&As</p> |

Properties

| | |
|-----------------------------|--|
| Form | Liquid |
| Storage instructions | Shipped at 4°C. Store at +4°C short term (1-2 weeks). Upon delivery aliquot. Store at -20°C long term. Avoid freeze / thaw cycle. |
| Storage buffer | <p>pH: 7.40</p> <p>Preservative: 0.02% Proclin 300</p> <p>Constituents: 50% Glycerol (glycerin, glycerine), 1% BSA, 48.98% TBS, 1X</p> |
| Purity | Protein A purified |

| | |
|------------------|------------|
| Clonality | Polyclonal |
| Isotype | IgG |

Applications

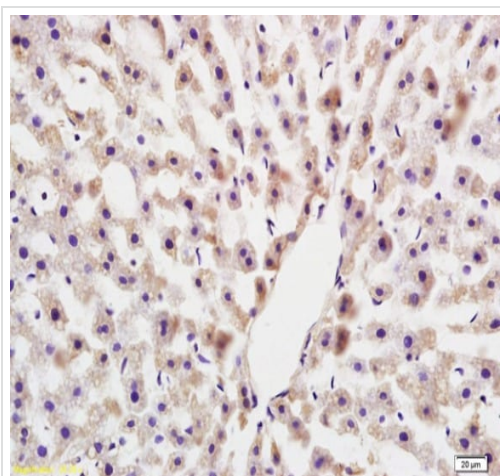
The Abpromise guarantee Our **Abpromise guarantee** covers the use of ab213156 in the following tested applications. The application notes include recommended starting dilutions; optimal dilutions/concentrations should be determined by the end user.

| Application | Abreviews | Notes |
|-------------|-----------|----------------|
| IHC-P | | 1/100 - 1/500. |

Target

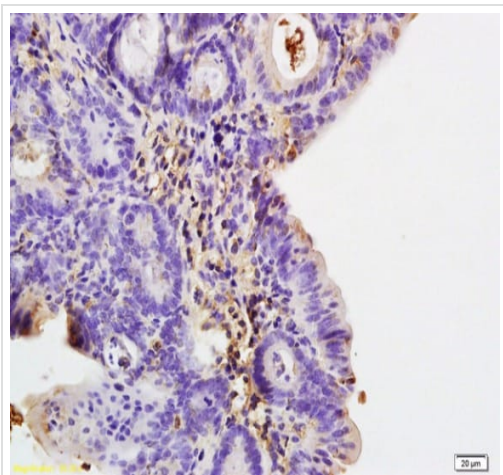
| | |
|------------------------------|---|
| Function | Lectin that binds to various sugars: galactose > mannose = fucose > N-acetylglucosamine > N-acetylgalactosamine. |
| Tissue specificity | Highly expressed in liver, placenta and adrenal gland. Moderately expressed in small intestine, lung, stomach and prostate. Weakly expressed in trachea and spleen. |
| Sequence similarities | Belongs to the COLEC10/COLEC11 family. Contains 1 C-type lectin domain. Contains 1 collagen-like domain. |
| Cellular localization | Secreted. According to PubMed:10224141, cytoplasmic. |

Images



Immunohistochemical analysis of formalin-fixed, paraffin-embedded Rat liver tissue labeling COLEC10 with ab213156 at 1/200 dilution followed by conjugation to the secondary antibody and DAB staining.

Immunohistochemistry (Formalin/PFA-fixed paraffin-embedded sections) - Anti-COLEC10 antibody (ab213156)



Immunohistochemical analysis of formalin-fixed, paraffin-embedded Rat colitis tissue labeling COLEC10 with ab213156 at 1/200 dilution followed by conjugation to the secondary antibody and DAB staining.

Immunohistochemistry (Formalin/PFA-fixed paraffin-embedded sections) - Anti-COLEC10 antibody (ab213156)

Please note: All products are "FOR RESEARCH USE ONLY. NOT FOR USE IN DIAGNOSTIC PROCEDURES"

Our Abpromise to you: Quality guaranteed and expert technical support

- Replacement or refund for products not performing as stated on the datasheet
- Valid for 12 months from date of delivery
- Response to your inquiry within 24 hours
- We provide support in Chinese, English, French, German, Japanese and Spanish
- Extensive multi-media technical resources to help you
- We investigate all quality concerns to ensure our products perform to the highest standards

If the product does not perform as described on this datasheet, we will offer a refund or replacement. For full details of the Abpromise, please visit <https://www.abcam.com/abpromise> or contact our technical team.

Terms and conditions

- Guarantee only valid for products bought direct from Abcam or one of our authorized distributors