

Anti-COLEC11 antibody ab238585

2 Images

Overview

| | |
|----------------------------|---|
| Product name | Anti-COLEC11 antibody |
| Description | Rabbit polyclonal to COLEC11 |
| Host species | Rabbit |
| Tested applications | Suitable for: IHC-P, WB |
| Species reactivity | Reacts with: Rat, Human |
| Immunogen | Recombinant fragment corresponding to Human COLEC11 aa 26-271. Database link: Q9BWP8 |
| Positive control | IHC-P: Human kidney tissue. WB: Rat liver tissue lysate. |
| General notes | <p>The Life Science industry has been in the grips of a reproducibility crisis for a number of years. Abcam is leading the way in addressing this with our range of recombinant monoclonal antibodies and knockout edited cell lines for gold-standard validation. Please check that this product meets your needs before purchasing.</p> <p>If you have any questions, special requirements or concerns, please send us an inquiry and/or contact our Support team ahead of purchase. Recommended alternatives for this product can be found below, along with publications, customer reviews and Q&As</p> |

Properties

| | |
|-----------------------------|---|
| Form | Liquid |
| Storage instructions | Shipped at 4°C. Store at +4°C short term (1-2 weeks). Upon delivery aliquot. Store at -20°C long term. Avoid freeze / thaw cycle. |
| Storage buffer | pH: 7.30 Preservative: 0.02% Sodium azide Constituents: PBS, 50% Glycerol (glycerin, glycerine) |
| Purity | Immunogen affinity purified |
| Clonality | Polyclonal |
| Isotype | IgG |

Applications

The Abpromise guarantee

Our **Abpromise guarantee** covers the use of ab238585 in the following tested applications.

The application notes include recommended starting dilutions; optimal dilutions/concentrations should be determined by the end user.

| Application | Abreviews | Notes |
|-------------|-----------|---|
| IHC-P | | 1/20 - 1/200. |
| WB | | Use a concentration of 4 µg/ml. Predicted molecular weight: 29 kDa. |

Target

Function

Lectin that binds to various sugars including fucose and mannose. Has a higher affinity for fucose compared to mannose. Does not bind to glucose, N-acetylglucosamine and N-acetylgalactosamine. Also binds lipopolysaccharides (LPS). Involved in fundamental development serving as a guidance cue for neural crest cell migration.

Tissue specificity

Ubiquitous.

Involvement in disease

Defects in COLEC11 are the cause of 3MC syndrome type 2 (3MC2) [MIM:265050]. 3MC2 is an a disorder characterized by facial dysmorphism that includes hypertelorism, blepharophimosis, blepharoptosis and highly archedDE eyebrows, cleft lip and/or palate, craniosynostosis, learning disability and genital, limb and vesicorenal anomalies. The term 3MC syndrome includes Carnevale, Mingarelli, Malpuech, and Michels syndromes.

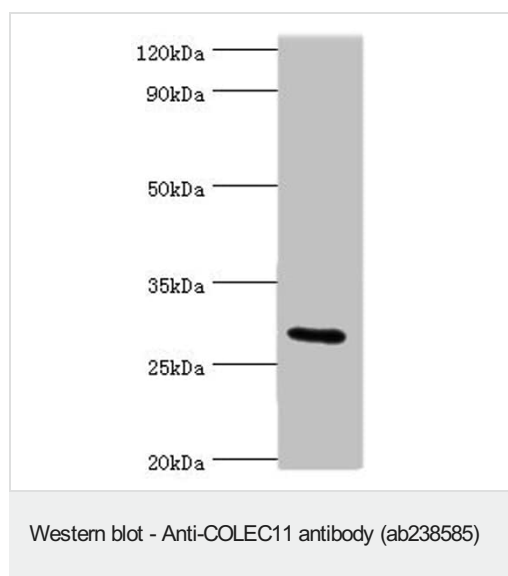
Sequence similarities

Belongs to the COLEC10/COLEC11 family.
Contains 1 C-type lectin domain.
Contains 1 collagen-like domain.

Cellular localization

Secreted.

Images

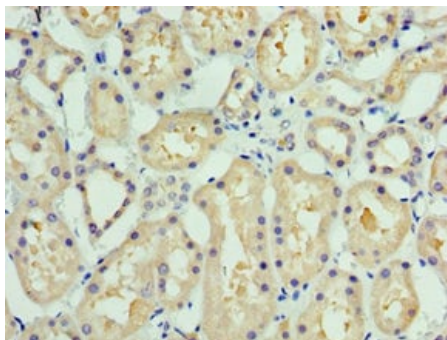


All lanes: ab238585 antibody at 4µg/ml + Rat liver tissue.

Secondary Goat polyclonal to rabbit IgG at 1/10000 dilution.

Predicted band size: 29, 27, 22, 30, 25, 24, 31 kDa.

Observed band size: 29 kDa.



Immunohistochemistry (Formalin/PFA-fixed paraffin-embedded sections) - Anti-COLEC11 antibody (ab238585)

Paraffin-embedded human kidney tissue stained for COLEC11 with ab238585 at a 1/100 dilution in immunohistochemical analysis.

Please note: All products are "FOR RESEARCH USE ONLY. NOT FOR USE IN DIAGNOSTIC PROCEDURES"

Our Abpromise to you: Quality guaranteed and expert technical support

- Replacement or refund for products not performing as stated on the datasheet
- Valid for 12 months from date of delivery
- Response to your inquiry within 24 hours
- We provide support in Chinese, English, French, German, Japanese and Spanish
- Extensive multi-media technical resources to help you
- We investigate all quality concerns to ensure our products perform to the highest standards

If the product does not perform as described on this datasheet, we will offer a refund or replacement. For full details of the Abpromise, please visit <https://www.abcam.com/abpromise> or contact our technical team.

Terms and conditions

- Guarantee only valid for products bought direct from Abcam or one of our authorized distributors