

Product datasheet

Anti-Connecdenn 3 antibody ab224721

3 Images

Overview

Product name	Anti-Connecdenn 3 antibody
Description	Rabbit polyclonal to Connecdenn 3
Host species	Rabbit
Tested applications	Suitable for: WB, IHC-P
Species reactivity	Reacts with: Rat, Human
Immunogen	Recombinant fragment corresponding to Human Connecdenn 3 aa 600 to the C-terminus. Database link: Q8IV53 Run BLAST with Run BLAST with
Positive control	WB: Rat liver and lung lysates. IHC-P: Human lymph node and lung tissues.
General notes	<p>The Life Science industry has been in the grips of a reproducibility crisis for a number of years. Abcam is leading the way in addressing this with our range of recombinant monoclonal antibodies and knockout edited cell lines for gold-standard validation. Please check that this product meets your needs before purchasing.</p> <p>If you have any questions, special requirements or concerns, please send us an inquiry and/or contact our Support team ahead of purchase. Recommended alternatives for this product can be found below, along with publications, customer reviews and Q&As</p>

Properties

Form	Liquid
Storage instructions	Shipped at 4°C. Store at +4°C short term (1-2 weeks). Upon delivery aliquot. Store at -20°C long term. Avoid freeze / thaw cycle.
Storage buffer	pH: 7.40 Preservative: 0.03% Proclin 300 Constituents: 50% Glycerol (glycerin, glycerine), PBS
Purity	Protein G purified
Purification notes	Purity >95%.
Clonality	Polyclonal
Isotype	IgG

Applications

The Abpromise guarantee

Our **Abpromise guarantee** covers the use of ab224721 in the following tested applications.

The application notes include recommended starting dilutions; optimal dilutions/concentrations should be determined by the end user.

Application	Abreviews	Notes
WB		1/500 - 1/5000. Detects a band of approximately 88 kDa (predicted molecular weight: 87 kDa).
IHC-P		1/20 - 1/200.

Target

Function

Guanine nucleotide exchange factor (GEF) for RAB35.

Sequence similarities

Contains 1 dDENN domain.

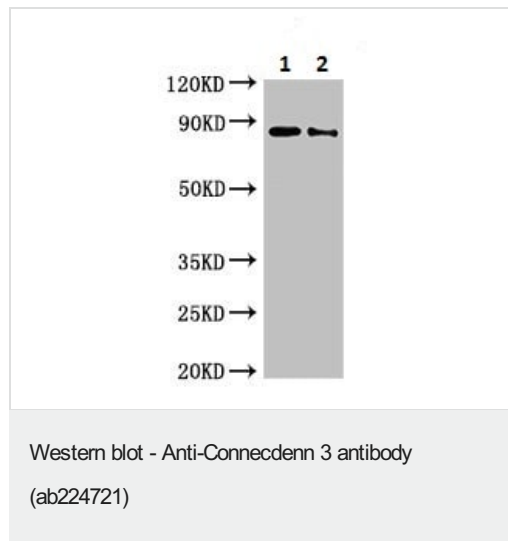
Contains 1 DENN domain.

Contains 1 uDENN domain.

Cellular localization

Cytoplasm > cytosol. Cytoplasmic vesicle > clathrin-coated vesicle.

Images



All lanes : Anti-Connecdenn 3 antibody (ab224721) at 1/500 dilution

Lane 1 : Rat liver lysate

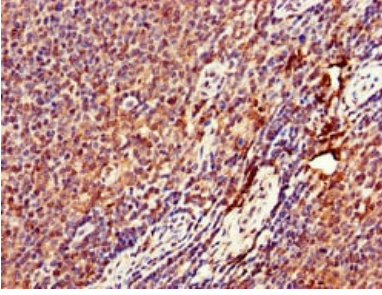
Lane 2 : Rat lung lysate

Secondary

All lanes : Goat polyclonal to rabbit IgG at 1/50000 dilution

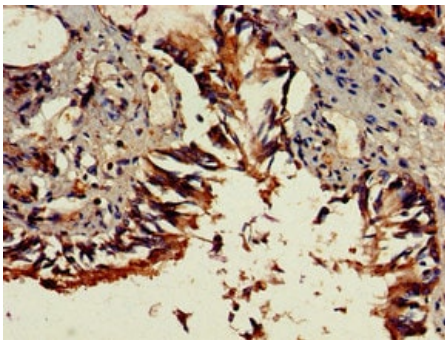
Predicted band size: 87 kDa

Observed band size: 88 kDa



Immunohistochemistry (Formalin/PFA-fixed paraffin-embedded sections) - Anti-Connecdenn 3 antibody (ab224721)

Paraffin-embedded human lymph node tissue stained for Connecdenn 3 using ab224721 at 1/100 dilution in immunohistochemical analysis.



Immunohistochemistry (Formalin/PFA-fixed paraffin-embedded sections) - Anti-Connecdenn 3 antibody (ab224721)

Paraffin-embedded human lung tissue stained for Connecdenn 3 using ab224721 at 1/100 dilution in immunohistochemical analysis.

Please note: All products are "FOR RESEARCH USE ONLY. NOT FOR USE IN DIAGNOSTIC PROCEDURES"

Our Abpromise to you: Quality guaranteed and expert technical support

- Replacement or refund for products not performing as stated on the datasheet
- Valid for 12 months from date of delivery
- Response to your inquiry within 24 hours
- We provide support in Chinese, English, French, German, Japanese and Spanish
- Extensive multi-media technical resources to help you
- We investigate all quality concerns to ensure our products perform to the highest standards

If the product does not perform as described on this datasheet, we will offer a refund or replacement. For full details of the Abpromise, please visit <https://www.abcam.com/abpromise> or contact our technical team.

Terms and conditions

- Guarantee only valid for products bought direct from Abcam or one of our authorized distributors