


## Product datasheet

### Anti-Connexin 45/GJA7/Cx45 antibody [5B9.2] ab78408

★★★★★ [2 Abreviews](#) [7 References](#) [2 Images](#)

#### Overview

<b>Product name</b>	Anti-Connexin 45/GJA7/Cx45 antibody [5B9.2]
<b>Description</b>	Mouse monoclonal [5B9.2] to Connexin 45/GJA7/Cx45
<b>Host species</b>	Mouse
<b>Tested applications</b>	<b>Suitable for:</b> Flow Cyt, ICC
<b>Species reactivity</b>	<b>Reacts with:</b> Rat, Human <b>Predicted to work with:</b> Mouse, Cow, Dog, Pig, Chinese hamster 
<b>Immunogen</b>	Synthetic peptide. This information is proprietary to Abcam and/or its suppliers.
<b>Epitope</b>	Near C terminal, cytoplasmic.
<b>Positive control</b>	ICC/IF: Connexin 45/GJA7/Cx45 transfected rat C6 cells. Flow Cyt: HeLa cells.
<b>General notes</b>	<p>This product was changed from ascites to tissue culture supernatant on 17th May 2019. Please note that the dilutions may need to be adjusted accordingly. If you have any questions, please do not hesitate to contact our scientific support team.</p> <p>The Life Science industry has been in the grips of a reproducibility crisis for a number of years. Abcam is leading the way in addressing this with our range of recombinant monoclonal antibodies and knockout edited cell lines for gold-standard validation. Please check that this product meets your needs before purchasing.</p> <p>If you have any questions, special requirements or concerns, please send us an inquiry and/or contact our Support team ahead of purchase. Recommended alternatives for this product can be found below, along with publications, customer reviews and Q&amp;As</p>

#### Properties

<b>Form</b>	Liquid
<b>Storage instructions</b>	Store at +4°C short term (1-2 weeks). Store at -20°C or -80°C. Avoid freeze / thaw cycle.
<b>Storage buffer</b>	pH: 7.60 Preservative: 0.1% Sodium azide Constituents: 1.45% Sodium chloride, 0.0536% PBS
<b>Purity</b>	Tissue culture supernatant
<b>Purification notes</b>	Purified from TCS.
<b>Clonality</b>	Monoclonal



Clone number	5B9.2
Isotype	IgG1

## Applications

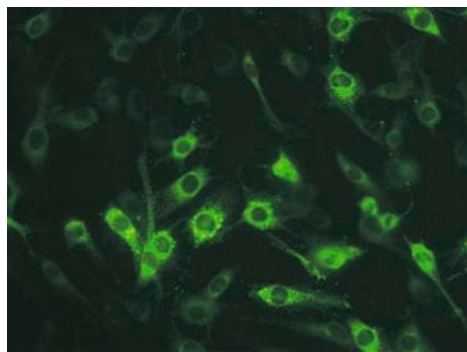
**The Abpromise guarantee** Our **Abpromise guarantee** covers the use of ab78408 in the following tested applications. The application notes include recommended starting dilutions; optimal dilutions/concentrations should be determined by the end user.

Application	Abreviews	Notes
Flow Cyt		Use at an assay dependent concentration. <b>ab170190</b> - Mouse monoclonal IgG1, is suitable for use as an isotype control with this antibody.
ICC		Use at an assay dependent concentration.

## Target

<b>Function</b>	One gap junction consists of a cluster of closely packed pairs of transmembrane channels, the connexons, through which materials of low MW diffuse from one cell to a neighboring cell.
<b>Sequence similarities</b>	Belongs to the connexin family. Gamma-type subfamily.
<b>Cellular localization</b>	Cell membrane. Cell junction > gap junction.

## Images

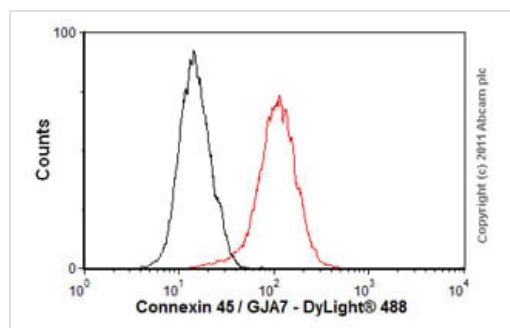


ab78408 staining Connexin 45/GJA7/Cx45 transfected rat C6 cells by Immunocytochemistry.

This image was generated using the ascites version of the product.

Immunocytochemistry - Anti-Connexin  
45/GJA7/Cx45 antibody [5B9.2] (ab78408)





Flow Cytometry - Anti-Connexin 45/GJA7/Cx45 antibody [5B9.2] (ab78408)

Overlay histogram showing HeLa cells stained with ab78408 (red line). The cells were fixed with 80% methanol (5 min) and then permeabilized with 0.1% PBS-Tween for 20 min. The cells were then incubated in 1x PBS / 10% normal goat serum / 0.3M glycine to block non-specific protein-protein interactions followed by the antibody (ab78408, 1µg/1x10<sup>6</sup> cells) for 30 min at 22°C. The secondary antibody used was DyLight® 488 goat anti-mouse IgG (H+L) ([ab96879](#)) at 1/500 dilution for 30 min at 22°C. Isotype control antibody (black line) was mouse IgG1 [ICIGG1] ([ab91353](#), 2µg/1x10<sup>6</sup> cells) used under the same conditions. Acquisition of >5,000 events was performed. This antibody gave a positive result in HeLa cells fixed with 4% paraformaldehyde (10 min)/permeabilized in 0.1% PBS-Tween for 20 min used under the same conditions.

This image was generated using the ascites version of the product.

**Please note:** All products are "FOR RESEARCH USE ONLY. NOT FOR USE IN DIAGNOSTIC PROCEDURES"

### Our Abpromise to you: Quality guaranteed and expert technical support

- Replacement or refund for products not performing as stated on the datasheet
- Valid for 12 months from date of delivery
- Response to your inquiry within 24 hours
- We provide support in Chinese, English, French, German, Japanese and Spanish
- Extensive multi-media technical resources to help you
- We investigate all quality concerns to ensure our products perform to the highest standards

If the product does not perform as described on this datasheet, we will offer a refund or replacement. For full details of the Abpromise, please visit <https://www.abcam.com/abpromise> or contact our technical team.

### Terms and conditions

- Guarantee only valid for products bought direct from Abcam or one of our authorized distributors