




Product datasheet

Anti-Contactin 6 antibody ab224596

2 Images

Overview

Product name	Anti-Contactin 6 antibody
Description	Rabbit polyclonal to Contactin 6
Host species	Rabbit
Tested applications	Suitable for: WB, IHC-P
Species reactivity	Reacts with: Human Predicted to work with: Rat 
Immunogen	Recombinant fragment corresponding to Human Contactin 6 aa 700-850. Database link: Q9UQ52  Run BLAST with  Run BLAST with
Positive control	WB: A549 and HepG2 cell lysate. IHC: Human thyroid tissue.
General notes	<p>The Life Science industry has been in the grips of a reproducibility crisis for a number of years. Abcam is leading the way in addressing this with our range of recombinant monoclonal antibodies and knockout edited cell lines for gold-standard validation. Please check that this product meets your needs before purchasing.</p> <p>If you have any questions, special requirements or concerns, please send us an inquiry and/or contact our Support team ahead of purchase. Recommended alternatives for this product can be found below, along with publications, customer reviews and Q&As</p>

Properties

Form	Liquid
Storage instructions	Shipped at 4°C. Store at +4°C short term (1-2 weeks). Upon delivery aliquot. Store at -20°C long term. Avoid freeze / thaw cycle.
Storage buffer	pH: 7.40 Preservative: 0.03% Proclin 300 Constituents: 50% Glycerol (glycerin, glycerine), PBS
Purity	Protein G purified
Clonality	Polyclonal
Isotype	IgG

Applications

The Abpromise guarantee

Our **Abpromise guarantee** covers the use of ab224596 in the following tested applications.

The application notes include recommended starting dilutions; optimal dilutions/concentrations should be determined by the end user.

Application	Abreviews	Notes
WB		1/500 - 1/5000. Detects a band of approximately 114 kDa (predicted molecular weight: 114 kDa).
IHC-P		1/20 - 1/200.

Target

Function

Contactins mediate cell surface interactions during nervous system development. Participates in oligodendrocytes generation by acting as a ligand of NOTCH1. Its association with NOTCH1 promotes NOTCH1 activation through the released notch intracellular domain (NICD) and subsequent translocation to the nucleus. Involved in motor coordination.

Tissue specificity

Expressed in nervous system. Highly expressed in cerebellum. Expressed at intermediate level in thalamus, subthalamic nucleus. Weakly expressed in corpus callosum, caudate nucleus and spinal cord.

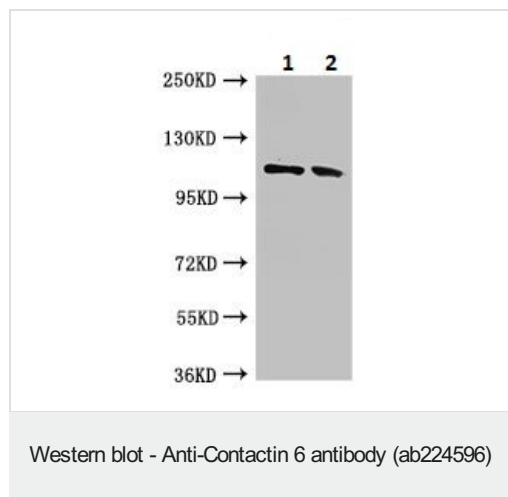
Sequence similarities

Belongs to the immunoglobulin superfamily. Contactin family.
Contains 4 fibronectin type-III domains.
Contains 6 Ig-like C2-type (immunoglobulin-like) domains.

Cellular localization

Cell membrane.

Images



All lanes : Anti-Contactin 6 antibody (ab224596) at 1/500 dilution

Lane 1 : A549 (human lung carcinoma cell line) cell lysate

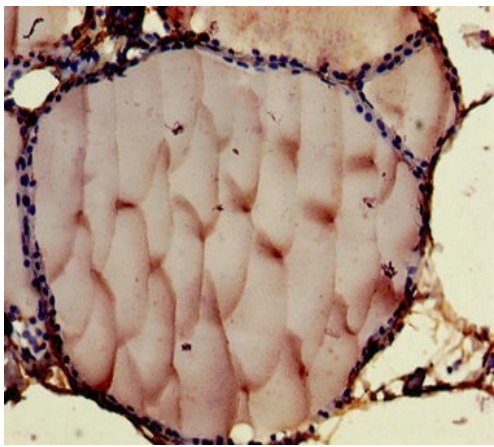
Lane 2 : HepG2 (human liver hepatocellular carcinoma cell line) cell lysate

Secondary

All lanes : Goat polyclonal to rabbit IgG at 1/50000 dilution

Predicted band size: 114 kDa

Observed band size: 114 kDa



Immunohistochemistry (Formalin/PFA-fixed paraffin-embedded sections) - Anti-Contactin 6 antibody (ab224596)

Paraffin-embedded human thyroid tissue stained for Contactin 6 using ab224596 at 1/100 dilution in immunohistochemical analysis.

Please note: All products are "FOR RESEARCH USE ONLY. NOT FOR USE IN DIAGNOSTIC PROCEDURES"

Our Abpromise to you: Quality guaranteed and expert technical support

- Replacement or refund for products not performing as stated on the datasheet
- Valid for 12 months from date of delivery
- Response to your inquiry within 24 hours
- We provide support in Chinese, English, French, German, Japanese and Spanish
- Extensive multi-media technical resources to help you
- We investigate all quality concerns to ensure our products perform to the highest standards

If the product does not perform as described on this datasheet, we will offer a refund or replacement. For full details of the Abpromise, please visit <https://www.abcam.com/abpromise> or contact our technical team.

Terms and conditions

- Guarantee only valid for products bought direct from Abcam or one of our authorized distributors