


Anti-CoREST3 / RCOR3 antibody ab76921

★★★★★ [1 Abreviews](#) [3 References](#) [4 Images](#)

Overview

Product name	Anti-CoREST3 / RCOR3 antibody
Description	Rabbit polyclonal to CoREST3 / RCOR3
Host species	Rabbit
Tested applications	Suitable for: WB, IP, IHC-P, ICC
Species reactivity	Reacts with: Mouse, Human Predicted to work with: Horse, Guinea pig, Cow, Dog, Chimpanzee, Rhesus monkey, Gorilla, Orangutan, Elephant 
Immunogen	Synthetic peptide corresponding to Human CoREST3/ RCOR3. Synthetic peptide corresponding to a region between residue 445 and 495 of human CoREST3/ RCOR3 (NP_060724.1), (and between residues 503-553 NP_001129695.1.). Database link: Q9P2K3
General notes	<p>The Life Science industry has been in the grips of a reproducibility crisis for a number of years. Abcam is leading the way in addressing this with our range of recombinant monoclonal antibodies and knockout edited cell lines for gold-standard validation. Please check that this product meets your needs before purchasing.</p> <p>If you have any questions, special requirements or concerns, please send us an inquiry and/or contact our Support team ahead of purchase. Recommended alternatives for this product can be found below, along with publications, customer reviews and Q&As</p>

Properties

Form	Liquid
Storage instructions	Shipped at 4°C. Upon delivery aliquot and store at -20°C. Avoid freeze / thaw cycles.
Storage buffer	pH: 6.8 Preservative: 0.09% Sodium azide Constituents: 0.1% BSA, Tris buffered saline
Purity	Immunogen affinity purified
Clonality	Polyclonal
Isotype	IgG

Applications

The Abpromise guarantee

Our **Abpromise guarantee** covers the use of ab76921 in the following tested applications.

The application notes include recommended starting dilutions; optimal dilutions/concentrations should be determined by the end user.

Application	Abreviews	Notes
WB		1/2000 - 1/10000. Predicted molecular weight: 66 kDa.
IP		Use at 2-5 µg/mg of lysate.
IHC-P		1/200.
ICC		1/50 - 1/250.

Target

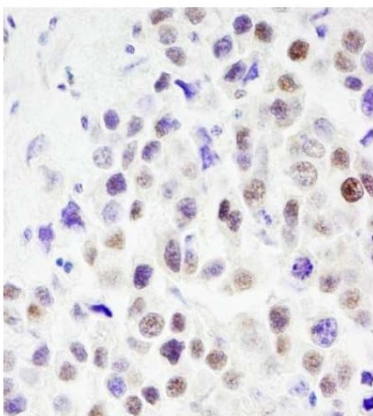
Relevance

The CoREST3 gene encodes a functional corepressor required for regulation of neural specific gene expression. REST (RE1 silencing transcription factor 1) can mediate extraneuronal restriction by imposing either active repression via histone deacetylase recruitment or long term gene silencing using a distinct functional complex. Silencing of neuronal specific genes requires the recruitment of an associated corepressor, CoREST, that serves as a functional molecular beacon for the recruitment of molecular machinery that imposes silencing across a chromosomal interval, including transcriptional units that do not themselves contain REST response elements.

Cellular localization

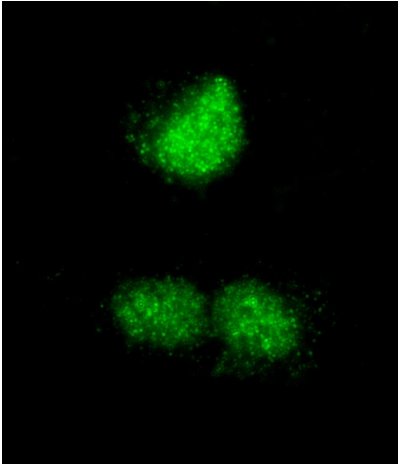
Nuclear

Images



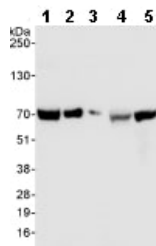
Immunohistochemistry (Formalin/PFA-fixed paraffin-embedded sections) analysis of human testicular seminoma tissue labelling CoREST3 / RCOR3 with ab76921 at 1/200 dilution.

Immunohistochemistry (Formalin/PFA-fixed paraffin-embedded sections) - Anti-CoREST3 / RCOR3 antibody (ab76921)



Immunocytochemistry - Anti-CoREST3 / RCOR3 antibody (ab76921)

Immunocytochemistry/Immunofluorescence analysis of NBF-fixed HeLa cells labelling CoREST3 / RCOR3 with ab76921 at 1/80 (2.5µg/ml). A DyLight® 488-conjugated goat anti-rabbit IgG (H+L) (1/100) was used as the secondary antibody.



Western blot - Anti-CoREST3 / RCOR3 antibody (ab76921)

All lanes : Anti-CoREST3 / RCOR3 antibody (ab76921) at 0.04 µg/ml

Lane 1 : HeLa whole cell lysate at 50 µg

Lane 2 : HeLa whole cell lysate at 15 µg

Lane 3 : HeLa whole cell lysate at 5 µg

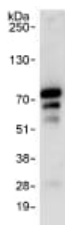
Lane 4 : 293T whole cell lysate at 50 µg

Lane 5 : NIH3T3 whole cell lysate at 50 µg

Predicted band size: 66 kDa

Observed band size: 70 kDa

Exposure time: 1 second



Immunoprecipitation - Anti-CoREST3 / RCOR3 antibody (ab76921)

Detection of CoREST3 / RCOR3 by Western Blot of Immunoprecipitate.

ab76921 at 1µg/ml staining CoREST3 / RCOR3 in HeLa whole cell lysate immunoprecipitated using ab76921 at 3µg/mg lysate (1 mg/IP; 20% of IP loaded/lane).

Detection: Chemiluminescence with exposure time of 10 seconds.

Please note: All products are "FOR RESEARCH USE ONLY. NOT FOR USE IN DIAGNOSTIC PROCEDURES"

Our Abpromise to you: Quality guaranteed and expert technical support

- Replacement or refund for products not performing as stated on the datasheet
- Valid for 12 months from date of delivery
- Response to your inquiry within 24 hours

- We provide support in Chinese, English, French, German, Japanese and Spanish
- Extensive multi-media technical resources to help you
- We investigate all quality concerns to ensure our products perform to the highest standards

If the product does not perform as described on this datasheet, we will offer a refund or replacement. For full details of the Abpromise, please visit <https://www.abcam.com/abpromise> or contact our technical team.

Terms and conditions

- Guarantee only valid for products bought direct from Abcam or one of our authorized distributors