

Product datasheet

Anti-Cornulin antibody ab224122

1 Image

Overview

Product name	Anti-Cornulin antibody
Description	Rabbit polyclonal to Cornulin
Host species	Rabbit
Tested applications	Suitable for: IHC-P
Species reactivity	Reacts with: Human
Immunogen	Recombinant fragment corresponding to Human Cornulin aa 150-300. Database link: Q9UBG3 Run BLAST with Run BLAST with
Positive control	IHC-P: Human oral mucosa tissue.
General notes	<p>The Life Science industry has been in the grips of a reproducibility crisis for a number of years. Abcam is leading the way in addressing this with our range of recombinant monoclonal antibodies and knockout edited cell lines for gold-standard validation. Please check that this product meets your needs before purchasing.</p> <p>If you have any questions, special requirements or concerns, please send us an inquiry and/or contact our Support team ahead of purchase. Recommended alternatives for this product can be found below, along with publications, customer reviews and Q&As</p>

Properties

Form	Liquid
Storage instructions	Shipped at 4°C. Store at +4°C short term (1-2 weeks). Upon delivery aliquot. Store at -20°C long term. Avoid freeze / thaw cycle.
Storage buffer	pH: 7.20 Preservative: 0.02% Sodium azide Constituents: 40% Glycerol (glycerin, glycerine), PBS
Purity	Immunogen affinity purified
Clonality	Polyclonal
Isotype	IgG

Applications

The Abpromise guarantee

Our **Abpromise guarantee** covers the use of ab224122 in the following tested applications.

The application notes include recommended starting dilutions; optimal dilutions/concentrations should be determined by the end user.

Application	Abreviews	Notes
IHC-P		1/50 - 1/200. Perform heat mediated antigen retrieval with citrate buffer pH 6 before commencing with IHC staining protocol.

Target**Function**

Survival factor that participates in the clonogenicity of squamous esophageal epithelium cell lines, attenuates deoxycholic acid (DCA)-induced apoptotic cell death and release of calcium. When overexpressed in oral squamous carcinom cell lines, regulates negatively cell proliferation by the induction of G1 arrest.

Tissue specificity

Squamous epithelia cell-specific. Expressed in the esophagus (periphery of the cells of the granular and the upper spinous layers), foreskin (granular and lower cornified cells), scalp skin (granular layer), inner root sheath of the hair follicle and in primary keratinocytes (at protein level). Expressed in the squamous epithelium of the cervix, esophagus, foreskin and larynx. Expressed in the fetal bladder and scalp skin. Expressed at very low levels in the lung, kidney, uterus, skeletal muscle, heart and fetal brain. Undetectable or barely detectable in esophageal and oral squamous cell carcinoma compared with the matched adjacent normal esophageal mucosa. Undetectable or barely detectable in larynx and esophagus from patients with pH-documented laryngopharyngeal reflux (LPR).

Sequence similarities

Belongs to the S100-fused protein family.
Contains 1 EF-hand domain.

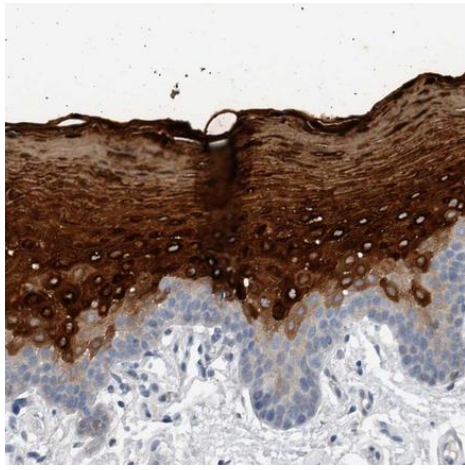
Domain

The EF-hand is necessary for the colony survival activity to protect cells from death induced by exposure to DCA.

Cellular localization

Cytoplasm. Does not colocalize with TGM1.

Images



Paraffin-embedded human oral mucosa tissue stained for Comulin with ab224122 (1/50) in immunohistochemical analysis.

Immunohistochemistry (Formalin/PFA-fixed paraffin-embedded sections) - Anti-Comulin antibody (ab224122)

Please note: All products are "FOR RESEARCH USE ONLY. NOT FOR USE IN DIAGNOSTIC PROCEDURES"

Our Abpromise to you: Quality guaranteed and expert technical support

- Replacement or refund for products not performing as stated on the datasheet
- Valid for 12 months from date of delivery
- Response to your inquiry within 24 hours
- We provide support in Chinese, English, French, German, Japanese and Spanish
- Extensive multi-media technical resources to help you
- We investigate all quality concerns to ensure our products perform to the highest standards

If the product does not perform as described on this datasheet, we will offer a refund or replacement. For full details of the Abpromise, please visit <https://www.abcam.com/abpromise> or contact our technical team.

Terms and conditions

- Guarantee only valid for products bought direct from Abcam or one of our authorized distributors