

Product datasheet

Anti-Coronin-1C antibody ab96266

2 Images

Overview

Product name	Anti-Coronin-1C antibody
Description	Rabbit polyclonal to Coronin-1C
Host species	Rabbit
Tested applications	Suitable for: WB, IHC-P
Species reactivity	Reacts with: Human
Immunogen	Synthetic peptide corresponding to Human Coronin-1C aa 400-500. Run BLAST with Expasy Run BLAST with NCBI
Positive control	A431 and H1299 whole cell lysates; Human Sarcoma meta to brain Blood Vessel; HeLa and HepG2 cells.
General notes	<p>The Life Science industry has been in the grips of a reproducibility crisis for a number of years. Abcam is leading the way in addressing this with our range of recombinant monoclonal antibodies and knockout edited cell lines for gold-standard validation. Please check that this product meets your needs before purchasing.</p> <p>If you have any questions, special requirements or concerns, please send us an inquiry and/or contact our Support team ahead of purchase. Recommended alternatives for this product can be found below, along with publications, customer reviews and Q&As</p>

Properties

Form	Liquid
Storage instructions	Shipped at 4°C. Upon delivery aliquot and store at -20°C or -80°C. Avoid repeated freeze / thaw cycles.
Storage buffer	pH: 7.00 Preservative: 0.01% Thimerosal (merthiolate) Constituents: 78.99% PBS, 1% BSA, 20% Glycerol (glycerin, glycerine)
Purity	Immunogen affinity purified
Clonality	Polyclonal
Isotype	IgG

Applications

The Abpromise guarantee

Our **Abpromise guarantee** covers the use of ab96266 in the following tested applications.

The application notes include recommended starting dilutions; optimal dilutions/concentrations should be determined by the end user.

Application	Abreviews	Notes
WB		1/500 - 1/3000. Predicted molecular weight: 53 kDa.
IHC-P		1/100 - 1/250.

Target

Function

May be involved in cytokinesis, motility, and signal transduction.

Tissue specificity

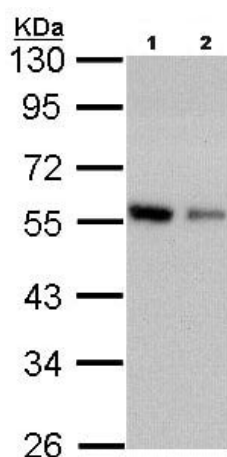
Ubiquitous.

Sequence similarities

Belongs to the WD repeat coronin family.

Contains 4 WD repeats.

Images



Western blot - Anti-Coronin-1C antibody (ab96266)

All lanes : Anti-Coronin-1C antibody (ab96266) at 1/1000 dilution

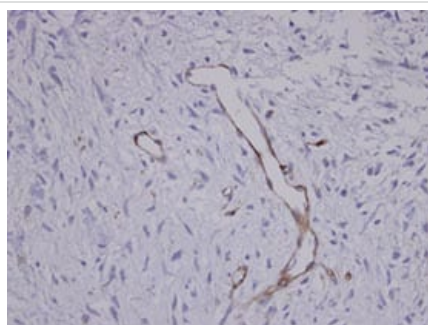
Lane 1 : A431 whole cell lysate

Lane 2 : H1299 whole cell lysate

Lysates/proteins at 30 µg per lane.

Predicted band size: 53 kDa

10% SDS-PAGE



Immunohistochemistry (Formalin/PFA-fixed paraffin-embedded sections) - Anti-Coronin-1C antibody (ab96266)

ab96266 at 1/100 dilution stainin Coronin-1C in paraffin-embedded Human Sarcoma meta to brain Blood Vessel.

Please note: All products are "FOR RESEARCH USE ONLY. NOT FOR USE IN DIAGNOSTIC PROCEDURES"

Our Abpromise to you: Quality guaranteed and expert technical support

- Replacement or refund for products not performing as stated on the datasheet
- Valid for 12 months from date of delivery
- Response to your inquiry within 24 hours
- We provide support in Chinese, English, French, German, Japanese and Spanish
- Extensive multi-media technical resources to help you
- We investigate all quality concerns to ensure our products perform to the highest standards

If the product does not perform as described on this datasheet, we will offer a refund or replacement. For full details of the Abpromise, please visit <https://www.abcam.com/abpromise> or contact our technical team.

Terms and conditions

- Guarantee only valid for products bought direct from Abcam or one of our authorized distributors