

Product datasheet

Anti-Coronin-7 antibody ab117446

3 Images

Overview

Product name	Anti-Coronin-7 antibody
Description	Rabbit polyclonal to Coronin-7
Host species	Rabbit
Tested applications	Suitable for: ICC/IF, WB, IHC-P
Species reactivity	Reacts with: Rat
Immunogen	Synthetic peptide corresponding to Human Coronin-7 (C terminal). Database link: NP_078811
General notes	<p>The Life Science industry has been in the grips of a reproducibility crisis for a number of years. Abcam is leading the way in addressing this with our range of recombinant monoclonal antibodies and knockout edited cell lines for gold-standard validation. Please check that this product meets your needs before purchasing.</p> <p>If you have any questions, special requirements or concerns, please send us an inquiry and/or contact our Support team ahead of purchase. Recommended alternatives for this product can be found below, along with publications, customer reviews and Q&As</p>

Properties

Form	Liquid
Storage instructions	Shipped at 4°C. Store at +4°C short term (1-2 weeks). Store at -20°C or -80°C. Avoid freeze / thaw cycle.
Storage buffer	pH: 7.2 Preservative: 0.02% Sodium azide Constituent: 99% PBS
Purity	Immunogen affinity purified
Clonality	Polyclonal
Isotype	IgG

Applications

The Abpromise guarantee Our **Abpromise guarantee** covers the use of ab117446 in the following tested applications.

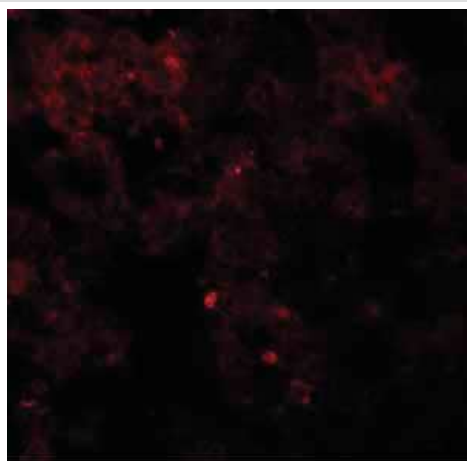
The application notes include recommended starting dilutions; optimal dilutions/concentrations should be determined by the end user.

Application	Abreviews	Notes
ICC/IF		Use a concentration of 20 µg/ml.
WB		Use a concentration of 1 - 2 µg/ml. Predicted molecular weight: 101 kDa.
IHC-P		Use at an assay dependent concentration.

Target

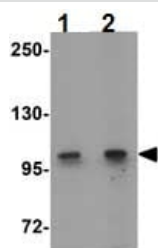
Function	May play a role in the maintenance of the Golgi apparatus morphology and in the protein export from the Golgi.
Sequence similarities	Belongs to the WD repeat coronin family. Contains 8 WD repeats.
Post-translational modifications	The membrane-associated form is phosphorylated on tyrosine residues.
Cellular localization	Cytoplasm > cytosol. Golgi apparatus membrane. Cytoplasmic vesicle. Predominantly cytosolic. Detected on vesicle-like cytoplasmic structures and on the cis-Golgi. Not associated with actin filaments.

Images



Immunofluorescence of Coronin-7 in rat lung tissue with ab117446 at 20 µg/mL.

Immunocytochemistry/ Immunofluorescence - Anti-Coronin-7 antibody (ab117446)



Western blot - Anti-Coronin-7 antibody (ab117446)

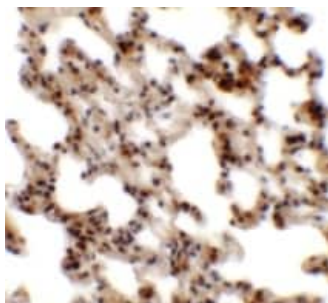
Lane 1 : Anti-Coronin-7 antibody (ab117446) at 1 µg/ml

Lane 2 : Anti-Coronin-7 antibody (ab117446) at 2 µg/ml

All lanes : Rat lung tissue lysate

Lysates/proteins at 15 µg per lane.

Predicted band size: 101 kDa



Immunohistochemistry (Formalin/PFA-fixed paraffin-embedded sections) - Anti-Coronin-7 antibody (ab117446)

Immunohistochemistry of Coronin-7 in rat lung tissue with ab117446 antibody at 2.5 ug/mL.

Please note: All products are "FOR RESEARCH USE ONLY. NOT FOR USE IN DIAGNOSTIC PROCEDURES"

Our Abpromise to you: Quality guaranteed and expert technical support

- Replacement or refund for products not performing as stated on the datasheet
- Valid for 12 months from date of delivery
- Response to your inquiry within 24 hours
- We provide support in Chinese, English, French, German, Japanese and Spanish
- Extensive multi-media technical resources to help you
- We investigate all quality concerns to ensure our products perform to the highest standards

If the product does not perform as described on this datasheet, we will offer a refund or replacement. For full details of the Abpromise, please visit <https://www.abcam.com/abpromise> or contact our technical team.

Terms and conditions

- Guarantee only valid for products bought direct from Abcam or one of our authorized distributors