


Product datasheet

Anti-COSMC antibody ab229831

[1 References](#) [4 Images](#)

Overview

Product name	Anti-COSMC antibody
Description	Rabbit polyclonal to COSMC
Host species	Rabbit
Tested applications	Suitable for: IHC-P, WB, ICC/IF
Species reactivity	Reacts with: Mouse, Human Predicted to work with: Rat, Cow 
Immunogen	Recombinant fragment corresponding to Human COSMC aa 1-200. Database link: Q96EU7 Run BLAST with Run BLAST with
Positive control	WB: Mouse gonadal and liver lysates. IHC-P: Human kidney and gastric cancer tissues. ICC/IF: HeLa cells.
General notes	<p>The Life Science industry has been in the grips of a reproducibility crisis for a number of years. Abcam is leading the way in addressing this with our range of recombinant monoclonal antibodies and knockout edited cell lines for gold-standard validation. Please check that this product meets your needs before purchasing.</p> <p>If you have any questions, special requirements or concerns, please send us an inquiry and/or contact our Support team ahead of purchase. Recommended alternatives for this product can be found below, along with publications, customer reviews and Q&As</p>

Properties

Form	Liquid
Storage instructions	Shipped at 4°C. Store at +4°C short term (1-2 weeks). Upon delivery aliquot. Store at -20°C long term. Avoid freeze / thaw cycle.
Storage buffer	pH: 7.30 Preservative: 0.02% Sodium azide Constituents: PBS, 50% Glycerol (glycerin, glycerine)
Purity	Immunogen affinity purified
Clonality	Polyclonal
Isotype	IgG

Applications

The Abpromise guarantee Our **Abpromise guarantee** covers the use of ab229831 in the following tested applications.

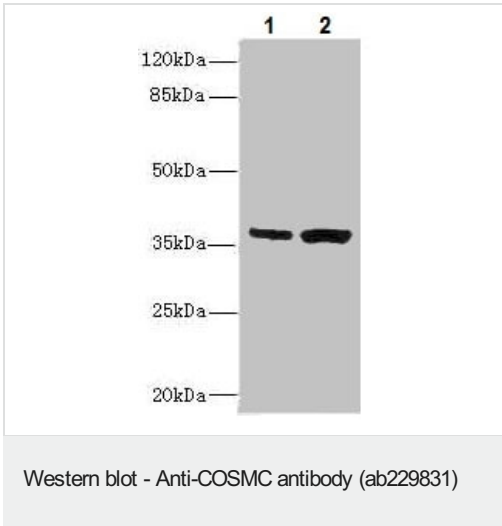
The application notes include recommended starting dilutions; optimal dilutions/concentrations should be determined by the end user.

Application	Abreviews	Notes
IHC-P		1/20 - 1/200.
WB		1/500 - 1/2000. Detects a band of approximately 36 kDa (predicted molecular weight: 36 kDa).
ICC/IF		1/50 - 1/200.

Target

Function	Probable chaperone required for the generation of 1 O-glycan Gal-beta1-3GalNAc-alpha1-Ser/Thr (T antigen), which is a precursor for many extended O-glycans in glycoproteins. Probably acts as a specific molecular chaperone assisting the folding/stability of core 1 beta-3-galactosyltransferase (C1GALT1).
Tissue specificity	Ubiquitously expressed. Abundantly expressed in salivary gland, stomach, small intestine, kidney, and testis and at intermediate levels in whole brain, cerebellum, spinal cord, thymus, spleen, trachea, lung, pancreas, ovary, and uterus.
Involvement in disease	Defects in C1GALT1C1 are the cause of Tn syndrome (TNSYN) [MIM:300622]. Tn syndrome is a rare autoimmune disease caused by somatic mutation in the C1GALT1C1 gene in which subpopulations of blood cells of all lineages carry an incompletely glycosylated membrane glycoprotein, i.e. the Tn antigen. Since leukocytes and platelets are affected as well as red cells, anemia, leukopenia and thrombocytopenia are features. Tn-polyagglutinability is sometimes associated with leukemia or is a preleukemic state.
Sequence similarities	Belongs to the glycosyltransferase 31 family. Beta3-Gal-T subfamily.
Cellular localization	Membrane.

Images



All lanes : Anti-COSMC antibody (ab229831) at 1/500 dilution

Lane 1 : Mouse gonadal lysate

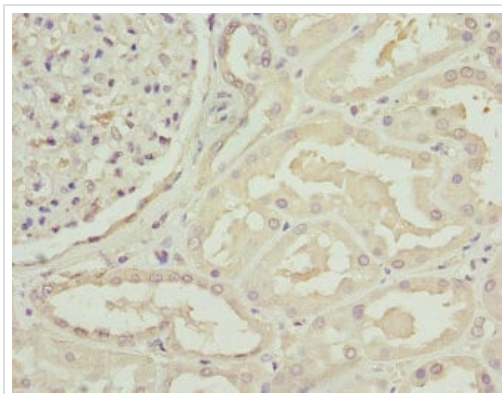
Lane 2 : Mouse liver lysate

Secondary

All lanes : Goat polyclonal to Rabbit IgG at 1/10000 dilution

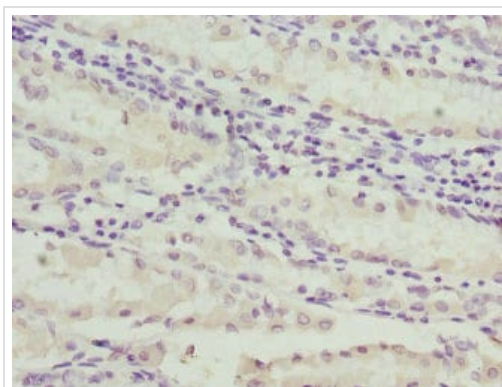
Predicted band size: 36 kDa

Observed band size: 36 kDa



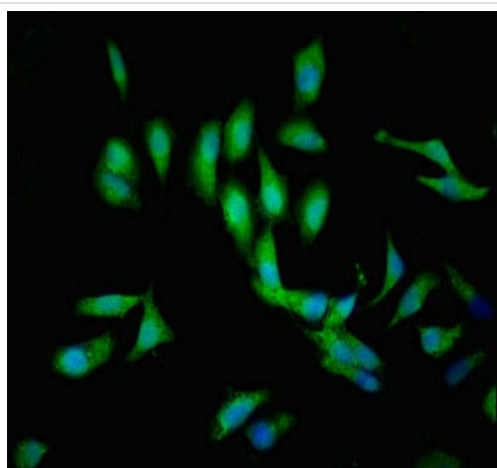
Paraffin-embedded human kidney tissue stained for COSMC using ab229831 at 1/100 dilution in immunohistochemical analysis.

Immunohistochemistry (Formalin/PFA-fixed paraffin-embedded sections) - Anti-COSMC antibody (ab229831)



Paraffin-embedded human gastric cancer tissue stained for COSMC using ab229831 at 1/100 dilution in immunohistochemical analysis.

Immunohistochemistry (Formalin/PFA-fixed paraffin-embedded sections) - Anti-COSMC antibody (ab229831)



Immunocytochemistry/ Immunofluorescence - Anti-COSMC antibody (ab229831)

HeLa (human epithelial cell line from cervix adenocarcinoma) cells stained for COSMC (green) using ab229831 at 1/100 dilution in ICC/IF, followed by Alexa Fluor 488[®] conjugated Goat Anti-Rabbit IgG (H+L).

Please note: All products are "FOR RESEARCH USE ONLY. NOT FOR USE IN DIAGNOSTIC PROCEDURES"

Our Abpromise to you: Quality guaranteed and expert technical support

- Replacement or refund for products not performing as stated on the datasheet
- Valid for 12 months from date of delivery
- Response to your inquiry within 24 hours

- We provide support in Chinese, English, French, German, Japanese and Spanish
- Extensive multi-media technical resources to help you
- We investigate all quality concerns to ensure our products perform to the highest standards

If the product does not perform as described on this datasheet, we will offer a refund or replacement. For full details of the Abpromise, please visit <https://www.abcam.com/abpromise> or contact our technical team.

Terms and conditions

- Guarantee only valid for products bought direct from Abcam or one of our authorized distributors