




Product datasheet

Anti-COTL1 antibody ab215064

1 Image

Overview

Product name	Anti-COTL1 antibody
Description	Sheep polyclonal to COTL1
Host species	Sheep
Tested applications	Suitable for: WB
Species reactivity	Reacts with: Human Predicted to work with: Mouse, Rat, Cow 
Immunogen	Recombinant full length protein corresponding to Human COTL1 aa 1 to the C-terminus. (Derived from E.coli). Database link: Q14019  Run BLAST with  Run BLAST with
Positive control	Human placenta tissue lysate.
General notes	<p>The Life Science industry has been in the grips of a reproducibility crisis for a number of years. Abcam is leading the way in addressing this with our range of recombinant monoclonal antibodies and knockout edited cell lines for gold-standard validation. Please check that this product meets your needs before purchasing.</p> <p>If you have any questions, special requirements or concerns, please send us an inquiry and/or contact our Support team ahead of purchase. Recommended alternatives for this product can be found below, along with publications, customer reviews and Q&As</p>

Properties

Form	Liquid
Storage instructions	Shipped at 4°C. Store at +4°C short term (1-2 weeks). Upon delivery aliquot. Store at -20°C long term. Avoid freeze / thaw cycle.
Storage buffer	Constituent: 100% PBS
Purity	Immunogen affinity purified
Purification notes	The IgG fraction of immunized serum was purified by antigen affinity chromatography.
Clonality	Polyclonal
Isotype	IgG

Applications

The Abpromise guarantee

Our **Abpromise guarantee** covers the use of ab215064 in the following tested applications.

The application notes include recommended starting dilutions; optimal dilutions/concentrations should be determined by the end user.

Application	Abreviews	Notes
WB		1/1000 - 1/2000. Detects a band of approximately 15 kDa (predicted molecular weight: 16 kDa).

Target

Function

Binds to F-actin in a calcium-independent manner. Has no direct effect on actin depolymerization.

Tissue specificity

Widely expressed with highest levels in placenta, lung, kidney and peripheral blood leukocytes and lower levels in brain, liver and pancreas.

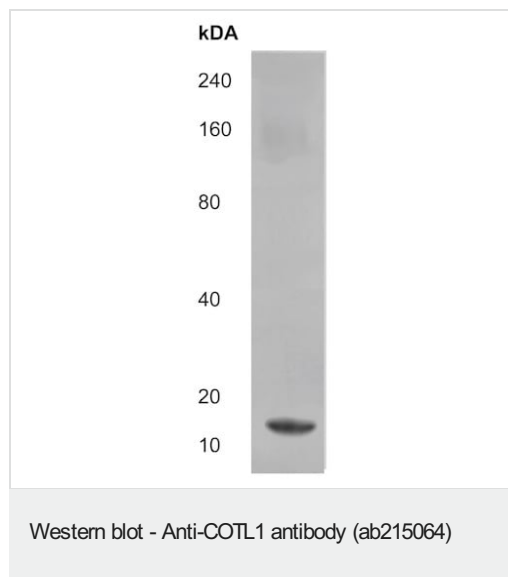
Sequence similarities

Belongs to the actin-binding proteins ADF family. Coactosin subfamily.
Contains 1 ADF-H domain.

Cellular localization

Cytoplasm > cytoskeleton.

Images



Anti-COTL1 antibody (ab215064) at 1/1000 dilution + Human placenta tissue lysate

Predicted band size: 16 kDa

Observed band size: 15 kDa

Please note: All products are "FOR RESEARCH USE ONLY. NOT FOR USE IN DIAGNOSTIC PROCEDURES"

Our Abpromise to you: Quality guaranteed and expert technical support

- Replacement or refund for products not performing as stated on the datasheet
- Valid for 12 months from date of delivery
- Response to your inquiry within 24 hours
- We provide support in Chinese, English, French, German, Japanese and Spanish

- Extensive multi-media technical resources to help you
- We investigate all quality concerns to ensure our products perform to the highest standards

If the product does not perform as described on this datasheet, we will offer a refund or replacement. For full details of the Abpromise, please visit <https://www.abcam.com/abpromise> or contact our technical team.

Terms and conditions

- Guarantee only valid for products bought direct from Abcam or one of our authorized distributors