


Product datasheet

Anti-COX IV antibody - Mitochondrial Loading Control ab16056

★★★★★ [33 Abreviews](#) [246 References](#) [8 Images](#)

Overview

Product name	Anti-COX IV antibody - Mitochondrial Loading Control
Description	Rabbit polyclonal to COX IV - Mitochondrial Loading Control
Host species	Rabbit
Tested applications	Suitable for: IHC-Fr, WB, ICC/IF, IHC-P
Species reactivity	Reacts with: Mouse, Rat, Human, Xenopus laevis, Potato, African green monkey, Chinese hamster Predicted to work with: Chimpanzee, Monkey 
Immunogen	Synthetic peptide corresponding to Human COX IV aa 150 to the C-terminus (C terminal) conjugated to keyhole limpet haemocyanin. (Peptide available as ab16381)
Positive control	ICC/IF: HeLa cells.
General notes	<p>This antibody makes an effective loading control for mitochondria. COX IV is generally expressed at a consistent high level. However, be aware that many proteins run at the same 16kD size as COX IV - our VDAC1 / Porin antibody makes a good alternative mitochondrial loading control for proteins of this size. Some caution is required when using this antibody as a loading control as COXIV expression can vary under some manipulations. An alternative mitochondrial loading control is Mouse monoclonal to COX IV antibody [20E8] (ab14744).</p> <p>The Life Science industry has been in the grips of a reproducibility crisis for a number of years. Abcam is leading the way in addressing this with our range of recombinant monoclonal antibodies and knockout edited cell lines for gold-standard validation. Please check that this product meets your needs before purchasing.</p> <p>If you have any questions, special requirements or concerns, please send us an inquiry and/or contact our Support team ahead of purchase. Recommended alternatives for this product can be found below, along with publications, customer reviews and Q&As</p>

Properties

Form	Liquid
Storage instructions	Shipped at 4°C. Store at +4°C short term (1-2 weeks). Upon delivery aliquot. Store at -20°C or -80°C. Avoid freeze / thaw cycle.

Storage buffer	<p>Preservative: 0.01% Sodium azide</p> <p>Constituents: PBS, 40% Glycerol (glycerin, glycerine), 0.05% BSA</p> <p>Batches of this product that have a concentration < 1mg/ml may have BSA added as a stabilising agent. If you would like information about the formulation of a specific lot, please contact our scientific support team who will be happy to help.</p>
Purity	Immunogen affinity purified
Primary antibody notes	<p>This antibody makes an effective loading control for mitochondria. COX IV is generally expressed at a consistent high level. However, be aware that many proteins run at the same 16kD size as COX IV - our VDAC1 / Porin antibody makes a good alternative mitochondrial loading control for proteins of this size. Some caution is required when using this antibody as a loading control as COXIV expression can vary under some manipulations. An alternative mitochondrial loading control is Mouse monoclonal to COX IV antibody [20E8] (ab14744).</p>
Clonality	Polyclonal
Isotype	IgG

Applications

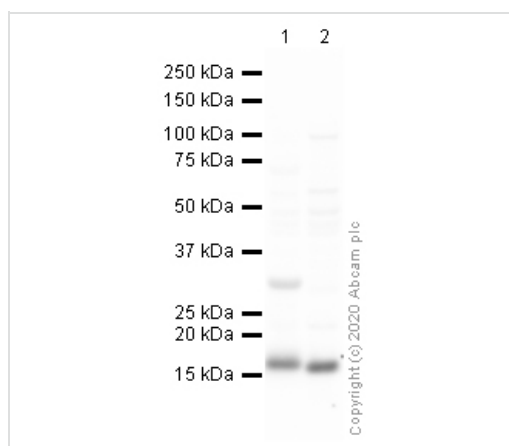
The Abpromise guarantee Our **Abpromise guarantee** covers the use of ab16056 in the following tested applications. The application notes include recommended starting dilutions; optimal dilutions/concentrations should be determined by the end user.

Application	Abreviews	Notes
IHC-Fr	★★★★★ (2)	Use at an assay dependent concentration.
WB	★★★★★ (15)	Use a concentration of 0.5 µg/ml. Detects a band of approximately 15 kDa (predicted molecular weight: 17 kDa).
ICC/IF	★★★★★ (6)	Use a concentration of 1 µg/ml.
IHC-P	★★★★★ (5)	Use a concentration of 1 µg/ml. Perform heat mediated antigen retrieval with citrate buffer pH 6 before commencing with IHC staining protocol.

Target

Function	This protein is one of the nuclear-coded polypeptide chains of cytochrome c oxidase, the terminal oxidase in mitochondrial electron transport.
Tissue specificity	Ubiquitous.
Sequence similarities	Belongs to the cytochrome c oxidase IV family.
Cellular localization	Mitochondrion inner membrane.

Images



Western blot - Anti-COX IV antibody - Mitochondrial Loading Control (ab16056)

All lanes : Anti-COX IV antibody - Mitochondrial Loading Control (ab16056) at 1 µg/ml

Lane 1 : Human skeletal muscle tissue lysate

Lane 2 : Rat skeletal muscle tissue

Lysates/proteins at 10 µg per lane.

Secondary

All lanes : Goat polyclonal to Rabbit IgG - H&L - Pre-Adsorbed (HRP) at 1/50000 dilution

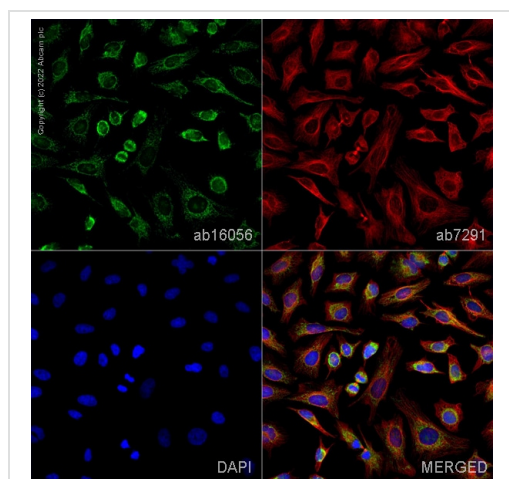
Predicted band size: 17 kDa

Observed band size: 17 kDa

Blocking buffer: 2% BSA

Gel type: MES

Exposure Time: 1 minute

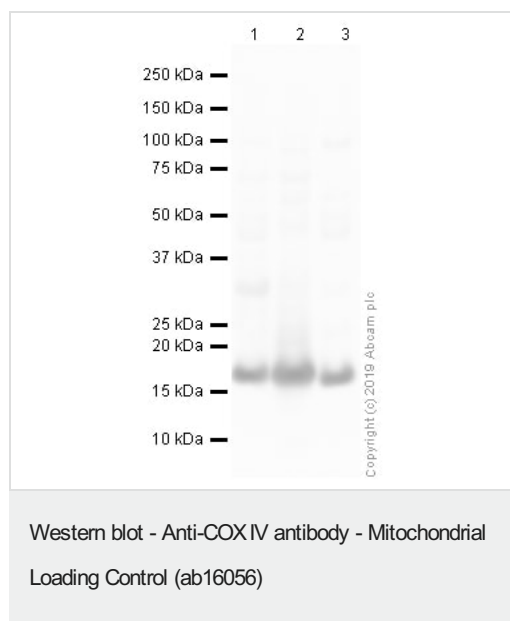


Immunocytochemistry/ Immunofluorescence - Anti-COX IV antibody - Mitochondrial Loading Control (ab16056)

ab16056 staining COX IV in HeLa cells. The cells were fixed with 4% paraformaldehyde (10 min), permeabilized with 0.1% PBS-Triton X-100 for 5 minutes and then blocked with 1% BSA/10% normal goat serum/0.3M glycine in 0.1%PBS-Tween for 1h. The cells were then incubated overnight at 4°C with ab16056 at 1µg/ml and **ab7291**, Mouse monoclonal [DM1A] to alpha Tubulin - Loading Control. Cells were then incubated with **ab150081**, Goat polyclonal Secondary Antibody to Rabbit IgG - H&L (Alexa Fluor® 488), pre-adsorbed at 1/1000 dilution (shown in green) and **ab150120**, Goat polyclonal Secondary Antibody to Mouse IgG - H&L (Alexa Fluor® 594), pre-adsorbed at 1/1000 dilution (shown in pseudocolour red). Nuclear DNA was labelled with DAPI (shown in blue).

Also suitable in cells fixed with 100% methanol (5 min).

Image was acquired with a high-content analyser (Operetta CLS, Perkin Elmer) and a maximum intensity projection of confocal sections is shown.



All lanes : Anti-COX IV antibody - Mitochondrial Loading Control (ab16056) at 1 µg/ml

Lane 1 : Human skeletal muscle tissue lysate

Lane 2 : Human heart tissue lysate

Lane 3 : Mouse skeletal muscle tissue lysate

Lysates/proteins at 10 µg per lane.

Secondary

All lanes : Goat polyclonal to Rabbit IgG - H&L - Pre-Adsorbed (HRP) at 1/50000 dilution

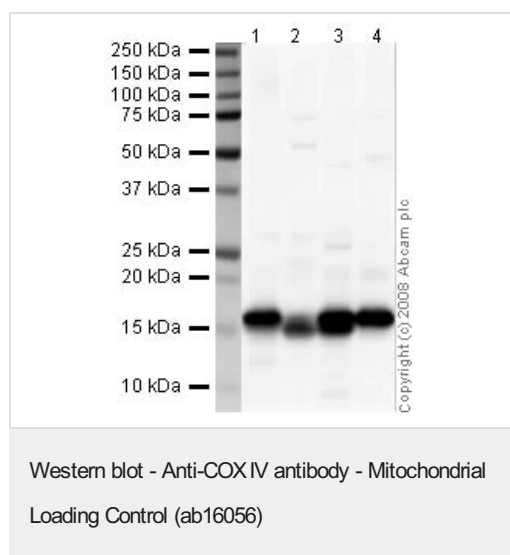
Predicted band size: 17 kDa

Observed band size: 17 kDa

Blocking buffer: 2% BSA

Gel type: MES

Exposure Time: 1 minute



All lanes : Anti-COX IV antibody - Mitochondrial Loading Control (ab16056) at 1 µg/ml

Lane 1 : Human brain tissue lysate - total protein ([ab29466](#))

Lane 2 : Human liver tissue lysate - total protein ([ab29889](#))

Lane 3 : Human heart tissue lysate - total protein ([ab29431](#))

Lane 4 : Human skeletal muscle tissue lysate - total protein ([ab29330](#))

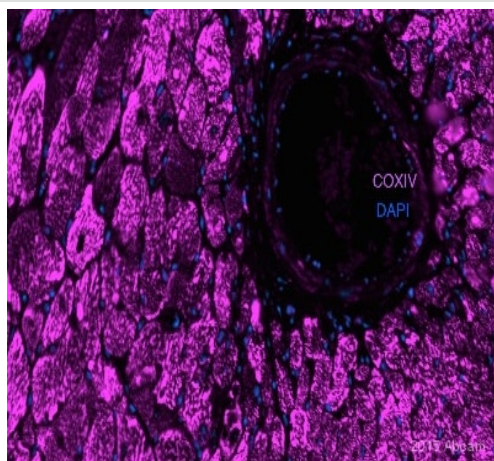
Lysates/proteins at 10 µg per lane.

Secondary

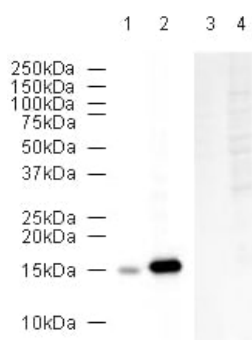
All lanes : Goat Anti-Rabbit IgG H&L (HRP) preadsorbed ([ab7090](#)) at 1/3000 dilution

Performed under reducing conditions.

Predicted band size: 17 kDa



Immunohistochemistry (Formalin/PFA-fixed paraffin-embedded sections) - Anti-COX IV antibody - Mitochondrial Loading Control (ab16056)
This image is courtesy of an anonymous Abreview



Western blot - Anti-COX IV antibody - Mitochondrial Loading Control (ab16056)

ab16056 staining COX IV in Mouse heart tissue sections by Immunohistochemistry (IHC-P - paraformaldehyde-fixed, paraffin-embedded sections). Tissue was fixed with paraformaldehyde and blocked with 5% serum for 1 hour at 21°C; antigen retrieval was by heat mediation in a citrate buffer. Samples were incubated with primary antibody (1/600) for 12 hours at 4°C. A Cy5® donkey anti-rabbit secondary antibody was used as the secondary antibody.

All lanes : Anti-COX IV antibody - Mitochondrial Loading Control (ab16056) at 0.38 µg/ml

Lane 1 : HeLa whole cell lysate

Lane 2 : Human skeletal muscle cell lysate

Lane 3 : HeLa whole cell lysate with Human COX IV peptide (**ab16381**) at 1 µg/ml

Lane 4 : Human skeletal muscle cell lysate with Human COX IV peptide (**ab16381**) at 1 µg/ml

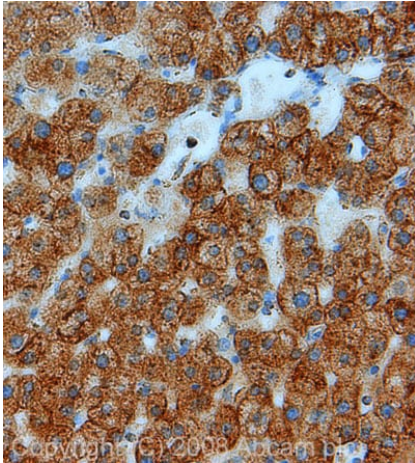
Lysates/proteins at 20 µg per lane.

Secondary

All lanes : HRP-conjugated goat anti-rabbit IgG at 1/10000 dilution

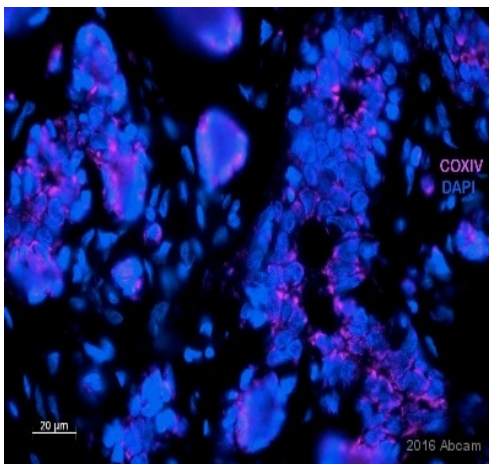
Predicted band size: 17 kDa

Observed band size: 15 kDa



Immunohistochemistry (Formalin/PFA-fixed paraffin-embedded sections) - Anti-COX IV antibody - Mitochondrial Loading Control (ab16056)

IHC image of COXIV staining in human liver FFPE section, performed on a Bond™ system using the standard protocol F. The section was pre-treated using heat mediated antigen retrieval with sodium citrate buffer (pH6, epitope retrieval solution 1) for 20 mins. The section was then incubated with ab16056, 1µg/ml, for 8 mins at room temperature and detected using an HRP conjugated compact polymer system. DAB was used as the chromogen. The section was then counterstained with haematoxylin and mounted with DPX.



Immunohistochemistry (Formalin/PFA-fixed paraffin-embedded sections) - Anti-COX IV antibody - Mitochondrial Loading Control (ab16056)

This image is courtesy of an anonymous Abreview.

ab16056 staining COX IV in breast tumour tissue sections by Immunohistochemistry (IHC-P - paraformaldehyde-fixed, paraffin-embedded sections). Tissue was fixed with 10% buffered formalin and blocked with 5% serum for 60 minutes at 21°C; antigen retrieval was by heat mediation in a 10mM sodium citrate buffer pH6. Samples were incubated with primary antibody (1/300 in blocking buffer) for 12 hours at 4°C. An Alexa Fluor® 647-conjugated donkey anti-rabbit IgG polyclonal (1/200) was used as the secondary antibody.

Please note: All products are "FOR RESEARCH USE ONLY. NOT FOR USE IN DIAGNOSTIC PROCEDURES"

Our Abpromise to you: Quality guaranteed and expert technical support

- Replacement or refund for products not performing as stated on the datasheet
- Valid for 12 months from date of delivery
- Response to your inquiry within 24 hours
- We provide support in Chinese, English, French, German, Japanese and Spanish
- Extensive multi-media technical resources to help you
- We investigate all quality concerns to ensure our products perform to the highest standards

If the product does not perform as described on this datasheet, we will offer a refund or replacement. For full details of the Abpromise, please visit <https://www.abcam.com/abpromise> or contact our technical team.

Terms and conditions

- Guarantee only valid for products bought direct from Abcam or one of our authorized distributors