


## Product datasheet

### Anti-COX17 antibody ab69611

★☆☆☆☆ [1 Abreviews](#) [5 References](#) [3 Images](#)

#### Overview

|                            |   |
|----------------------------|---|
| <b>Product name</b>        | Anti-COX17 antibody   |
| <b>Description</b>         | Rabbit polyclonal to COX17  |
| <b>Host species</b>        | Rabbit  |
| <b>Tested applications</b> | <b>Suitable for:</b> ICC/IF, WB, IHC-P  |
| <b>Species reactivity</b>  | <b>Reacts with:</b> Human<br><b>Predicted to work with:</b> Mouse, Rat   |
| <b>Immunogen</b>           | Synthetic peptide derived from the N-terminal of human COX17.   |
| <b>Positive control</b>    | Human liver carcinoma tissue. Extracts from HeLa, HepG2, 293 and COLO cells.  |
| <b>General notes</b>       | <p>The Life Science industry has been in the grips of a reproducibility crisis for a number of years. Abcam is leading the way in addressing this with our range of recombinant monoclonal antibodies and knockout edited cell lines for gold-standard validation. Please check that this product meets your needs before purchasing.</p> <p>If you have any questions, special requirements or concerns, please send us an inquiry and/or contact our Support team ahead of purchase. Recommended alternatives for this product can be found below, along with publications, customer reviews and Q&amp;As</p> |

#### Properties

|                             |   |
|-----------------------------|---|
| <b>Form</b>                 | Liquid  |
| <b>Storage instructions</b> | Shipped at 4°C. Upon delivery aliquot and store at -20°C. Avoid freeze / thaw cycles.   |
| <b>Storage buffer</b>       | <p>pH: 7.40</p> <p>Preservative: 0.02% Sodium azide</p> <p>Constituents: 50% Glycerol (glycerin, glycerine), 0.87% Sodium chloride, PBS</p> |
| <b>Purity</b>               | Without Mg2+ and Ca2+   |
| <b>Clonality</b>            | Immunogen affinity purified   |
| <b>Isotype</b>              | Polyclonal  |
|                             | IgG   |

#### Applications

## The Abpromise guarantee

Our **Abpromise guarantee** covers the use of ab69611 in the following tested applications.

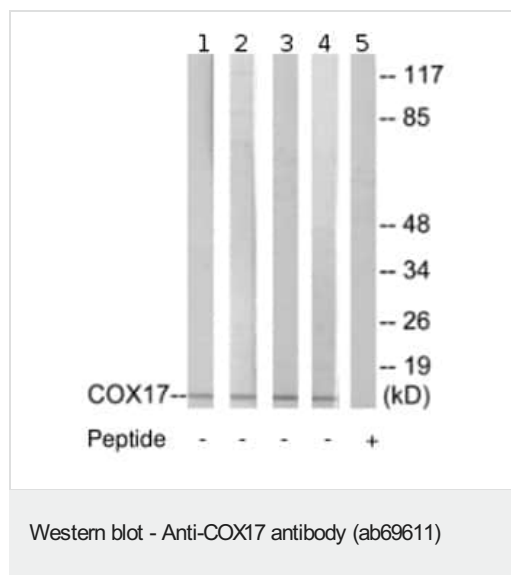
The application notes include recommended starting dilutions; optimal dilutions/concentrations should be determined by the end user.

| Application | Abreviews     | Notes  |
|-------------|---------------|--|
| ICC/IF      |               | Use a concentration of 1 µg/ml.  |
| WB          |               | 1/500 - 1/1000. Detects a band of approximately <19 kDa (predicted molecular weight: 7 kDa). |
| IHC-P       | ★ ★ ★ ★ ★ (1) | 1/50 - 1/100.  |

## Target

|                       |   |
|-----------------------|---|
| Function              | Copper chaperone for cytochrome c oxidase (COX). Binds two copper ions and deliver them to the Cu(A) site of COX. |
| Tissue specificity    | Ubiquitous.   |
| Sequence similarities | Belongs to the COX17 family.  |
| Cellular localization | Mitochondrion intermembrane space.  |

## Images



**All lanes :** Anti-COX17 antibody (ab69611) at 1/500 dilution

**Lane 1 :** Extracts from HeLa cells

**Lane 2 :** Extracts from HepG2 cells

**Lane 3 :** Extracts from COLO cells

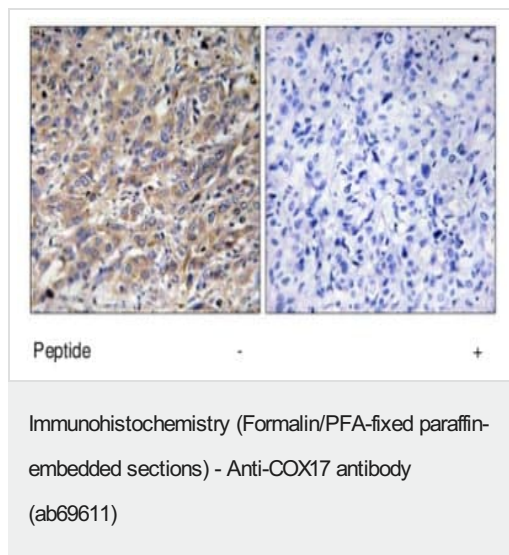
**Lane 4 :** Extracts from 293 cells

**Lane 5 :** Extracts from COLO cells with immunising peptide at 5 µg

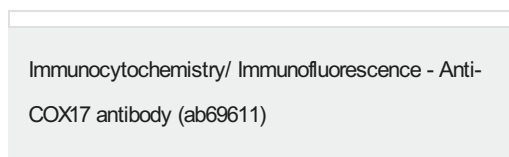
Lysates/proteins at 5 µg per lane.

**Predicted band size:** 7 kDa

**Observed band size:** <19 kDa



ab69611, at 1/50 dilution, staining human liver carcinoma tissue in the presence or absence of the immunising peptide.



ICC/IF image of ab69611 stained HeLa cells. The cells were 4% formaldehyde fixed (10 min) and then incubated in 1%BSA / 10% normal goat serum / 0.3M glycine in 0.1% PBS-Tween for 1h to permeabilise the cells and block non-specific protein-protein interactions. The cells were then incubated with the antibody (ab69611, 1µg/ml) overnight at +4°C. The secondary antibody (green) was **ab96899**, DyLight® 488 goat anti-rabbit IgG (H+L) used at a 1/250 dilution for 1h. Alexa Fluor® 594 WGA was used to label plasma membranes (red) at a 1/200 dilution for 1h. DAPI was used to stain the cell nuclei (blue) at a concentration of 1.43µM.

**Please note:** All products are "FOR RESEARCH USE ONLY. NOT FOR USE IN DIAGNOSTIC PROCEDURES"

### Our Abpromise to you: Quality guaranteed and expert technical support

- Replacement or refund for products not performing as stated on the datasheet
- Valid for 12 months from date of delivery
- Response to your inquiry within 24 hours
- We provide support in Chinese, English, French, German, Japanese and Spanish
- Extensive multi-media technical resources to help you
- We investigate all quality concerns to ensure our products perform to the highest standards

If the product does not perform as described on this datasheet, we will offer a refund or replacement. For full details of the Abpromise, please visit <https://www.abcam.com/abpromise> or contact our technical team.

#### **Terms and conditions**

---

- Guarantee only valid for products bought direct from Abcam or one of our authorized distributors