

Product datasheet

Anti-COX4I2 antibody ab70112

[6 References](#) [2 Images](#)

Overview

Product name	Anti-COX4I2 antibody
Description	Rabbit polyclonal to COX4I2
Host species	Rabbit
Tested applications	Suitable for: WB, ICC/IF
Species reactivity	Reacts with: Human, African green monkey
Immunogen	Synthetic peptide corresponding to Human COX4I2 aa 31-80 (internal sequence). Database link: Q96KJ9

General notes

The Life Science industry has been in the grips of a reproducibility crisis for a number of years. Abcam is leading the way in addressing this with our range of recombinant monoclonal antibodies and knockout edited cell lines for gold-standard validation. Please check that this product meets your needs before purchasing.

If you have any questions, special requirements or concerns, please send us an inquiry and/or contact our Support team ahead of purchase. Recommended alternatives for this product can be found below, along with publications, customer reviews and Q&As

Properties

Form	Liquid
Storage instructions	Shipped at 4°C. Store at -20°C. Stable for 12 months at -20°C.
Storage buffer	pH: 7.40 Preservative: 0.02% Sodium azide Constituents: 50% Glycerol (glycerin, glycerine), 0.87% Sodium chloride, PBS Without Mg ²⁺ and Ca ²⁺
Purity	Immunogen affinity purified
Purification notes	ab70112 was affinity-purified from rabbit antiserum by affinity-chromatography using epitope-specific immunogen
Clonality	Polyclonal
Isotype	IgG

Applications

The Abpromise guarantee

Our **Abpromise guarantee** covers the use of ab70112 in the following tested applications.

The application notes include recommended starting dilutions; optimal dilutions/concentrations should be determined by the end user.

Application	Abreviews	Notes
WB		1/500 - 1/1000. Detects a band of approximately 20 kDa (predicted molecular weight: 20 kDa).
ICC/IF		1/500 - 1/1000.

Target

Function

This protein is one of the nuclear-coded polypeptide chains of cytochrome c oxidase, the terminal oxidase in mitochondrial electron transport.

Tissue specificity

Highly expressed in lung.

Involvement in disease

Defects in COX4I2 are the cause of exocrine pancreatic insufficiency dyserythropoietic anemia and calvarial hyperostosis (EPIDACH) [MIM:612714]. Patients present with pancreatic insufficiency, intestinal malabsorption, failure to thrive, and anemia soon after birth.

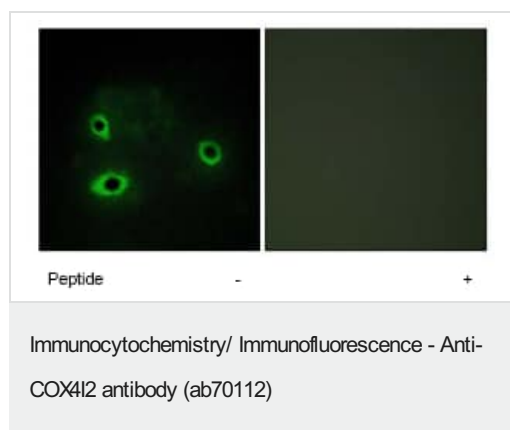
Sequence similarities

Belongs to the cytochrome c oxidase IV family.

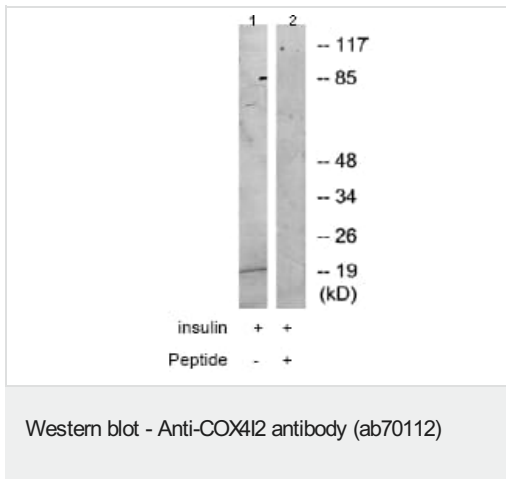
Cellular localization

Mitochondrion inner membrane.

Images



ab70112 at 1/500 dilution staining COX4I2 in COS7 cells by Immunofluorescence, in the absence or presence of the immunising peptide.



All lanes : Anti-COX4I2 antibody (ab70112) at 1/500 dilution

Lane 1 : K562 cell extracts treated with insulin (0.01U/ml, 15mins)

Lane 2 : K562 cell extracts treated with insulin (0.01U/ml, 15mins) with immunising peptide at 10 µg

Lysates/proteins at 30 µg per lane.

Predicted band size: 20 kDa

Observed band size: 20 kDa

Please note: All products are "FOR RESEARCH USE ONLY. NOT FOR USE IN DIAGNOSTIC PROCEDURES"

Our Abpromise to you: Quality guaranteed and expert technical support

- Replacement or refund for products not performing as stated on the datasheet
- Valid for 12 months from date of delivery
- Response to your inquiry within 24 hours
- We provide support in Chinese, English, French, German, Japanese and Spanish
- Extensive multi-media technical resources to help you
- We investigate all quality concerns to ensure our products perform to the highest standards

If the product does not perform as described on this datasheet, we will offer a refund or replacement. For full details of the Abpromise, please visit <https://www.abcam.com/abpromise> or contact our technical team.

Terms and conditions

- Guarantee only valid for products bought direct from Abcam or one of our authorized distributors