




Product datasheet

Anti-CPLX1 antibody ab231347

4 Images

Overview

Product name	Anti-CPLX1 antibody
Description	Rabbit polyclonal to CPLX1
Host species	Rabbit
Tested applications	Suitable for: IHC-P, WB
Species reactivity	Reacts with: Mouse, Rat, Human Predicted to work with: Cow, Cynomolgus monkey 
Immunogen	Recombinant full length protein (His-T7-tag) corresponding to Human CPLX1 aa 1 to the C-terminus. (Expressed in E.coli) Database link: Q14810 <div>  Run BLAST with  Run BLAST with </div>
Positive control	IHC-P: Human brain tissue. WB: Recombinant human CPLX1 protein. Mouse and rat cerebrum lysates.
General notes	<p>The Life Science industry has been in the grips of a reproducibility crisis for a number of years. Abcam is leading the way in addressing this with our range of recombinant monoclonal antibodies and knockout edited cell lines for gold-standard validation. Please check that this product meets your needs before purchasing.</p> <p>If you have any questions, special requirements or concerns, please send us an inquiry and/or contact our Support team ahead of purchase. Recommended alternatives for this product can be found below, along with publications, customer reviews and Q&As</p>

Properties

Form	Liquid
Storage instructions	Shipped at 4°C. Store at +4°C short term (1-2 weeks). Upon delivery aliquot. Store at -20°C long term. Avoid freeze / thaw cycle.
Storage buffer	pH: 7.40 Preservative: 0.011% Proclin 300 Constituents: 55.77% Glycerol (glycerin, glycerine), 44.219% PBS
Purity	Immunogen affinity purified
Purification notes	ab231347 was purified by antigen-specific affinity chromatography followed by Protein A affinity chromatography.

Clonality	Polyclonal
Isotype	IgG

Applications

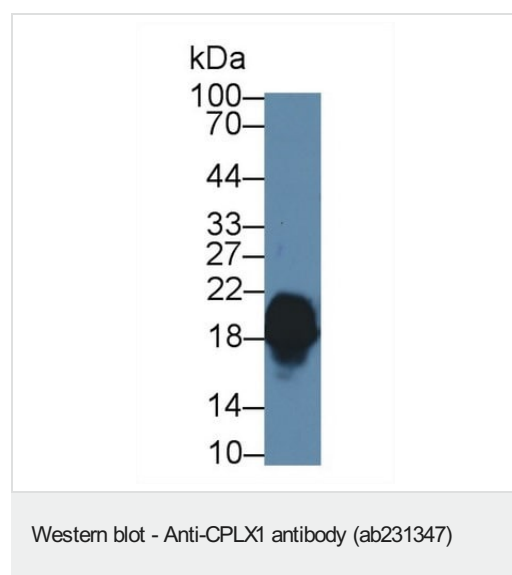
The Abpromise guarantee Our **Abpromise guarantee** covers the use of ab231347 in the following tested applications. The application notes include recommended starting dilutions; optimal dilutions/concentrations should be determined by the end user.

Application	Abreviews	Notes
IHC-P		Use a concentration of 5 - 20 µg/ml.
WB		Use a concentration of 0.2 - 2 µg/ml. Predicted molecular weight: 15 kDa.

Target

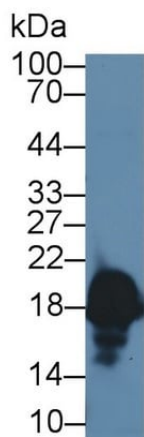
Function	Positively regulates a late step in synaptic vesicle exocytosis. Also involved in glucose-induced secretion of insulin by pancreatic beta-cells.
Tissue specificity	Nervous system. In hippocampus and cerebellum, expressed mainly by inhibitory neurons. Overexpressed in substantia nigra from patients with Parkinson disease.
Sequence similarities	Belongs to the complexin/synaphin family.
Cellular localization	Cytoplasm > cytosol. Enriched at synaptic-releasing sites in mature neurons.

Images



Anti-CPLX1 antibody (ab231347) at 2 µg/ml + Mouse cerebrum lysate.

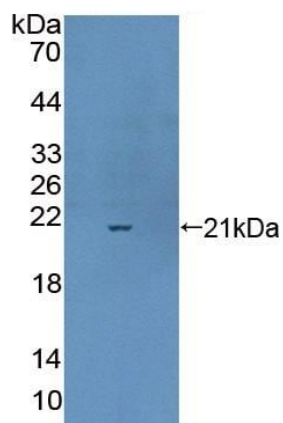
Predicted band size: 15 kDa



Western blot - Anti-CPLX1 antibody (ab231347)

Anti-CPLX1 antibody (ab231347) at 2 μ g/ml + Rat cerebrum lysate.

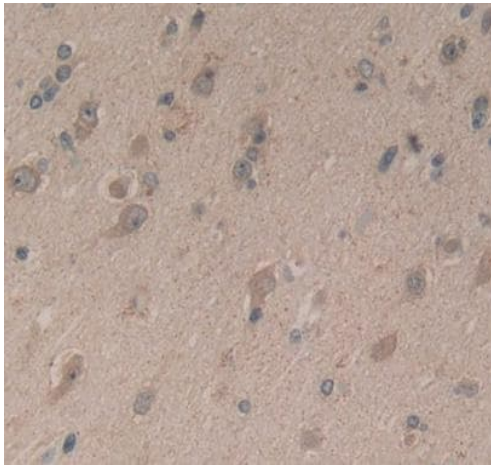
Predicted band size: 15 kDa



Western blot - Anti-CPLX1 antibody (ab231347)

Anti-CPLX1 antibody (ab231347) at 2 μ g/ml + Recombinant human CPLX1 protein.

Predicted band size: 15 kDa



Formalin-fixed, paraffin-embedded human brain tissue stained for CPLX1 using ab231347 at 20µg/ml in immunohistochemical analysis, DAB staining.

Immunohistochemistry (Formalin/PFA-fixed paraffin-embedded sections) - Anti-CPLX1 antibody (ab231347)

Please note: All products are "FOR RESEARCH USE ONLY. NOT FOR USE IN DIAGNOSTIC PROCEDURES"

Our Abpromise to you: Quality guaranteed and expert technical support

- Replacement or refund for products not performing as stated on the datasheet
- Valid for 12 months from date of delivery
- Response to your inquiry within 24 hours
- We provide support in Chinese, English, French, German, Japanese and Spanish
- Extensive multi-media technical resources to help you
- We investigate all quality concerns to ensure our products perform to the highest standards

If the product does not perform as described on this datasheet, we will offer a refund or replacement. For full details of the Abpromise, please visit <https://www.abcam.com/abpromise> or contact our technical team.

Terms and conditions

- Guarantee only valid for products bought direct from Abcam or one of our authorized distributors