

Product datasheet

Anti-CPN1 antibody [EPR6229] ab124874

Recombinant RabMAb

2 Images

Overview

Product name	Anti-CPN1 antibody [EPR6229]
Description	Rabbit monoclonal [EPR6229] to CPN1
Host species	Rabbit
Tested applications	Suitable for: WB Unsuitable for: Flow Cyt, IHC-P or IP
Species reactivity	Reacts with: Human
Immunogen	Synthetic peptide within Human CPN1 aa 100-200. The exact sequence is proprietary.
Positive control	Human plasma, HepG2 and Human fetal liver lysates
General notes	<p>This product is a recombinant monoclonal antibody, which offers several advantages including:</p> <ul style="list-style-type: none"> - High batch-to-batch consistency and reproducibility - Improved sensitivity and specificity - Long-term security of supply - Animal-free production <p>For more information see here.</p> <p>Our RabMAb[®] technology is a patented hybridoma-based technology for making rabbit monoclonal antibodies. For details on our patents, please refer to RabMAb[®] patents.</p> <p>Mouse, Rat: We have preliminary internal testing data to indicate this antibody may not react with these species. Please contact us for more information.</p>

Properties

Form	Liquid
Storage instructions	Shipped at 4°C. Store at -20°C. Stable for 12 months at -20°C.
Storage buffer	<p>pH: 7.20</p> <p>Preservative: 0.05% Sodium azide</p> <p>Constituents: 40% Glycerol (glycerin, glycerine), 9.85% Tris glycine, 50% Tissue culture supernatant</p>
Purity	Protein A purified
Clonality	Monoclonal

Clone number EPR6229

Isotype IgG

Applications

The Abpromise guarantee Our **Abpromise guarantee** covers the use of ab124874 in the following tested applications. The application notes include recommended starting dilutions; optimal dilutions/concentrations should be determined by the end user.

Application	Abreviews	Notes
WB		1/1000 - 1/10000. Detects a band of approximately 55, 48, 27 kDa (predicted molecular weight: 52 kDa). Note: The 48-kDa form is generated by proteolytic cleavage at the C-terminus. This subunit is cleaved into a peptide

Application notes Is unsuitable for Flow Cyt, IHC-P or IP.

Target

Function Protects the body from potent vasoactive and inflammatory peptides containing C-terminal Arg or Lys (such as kinins or anaphylatoxins) which are released into the circulation.

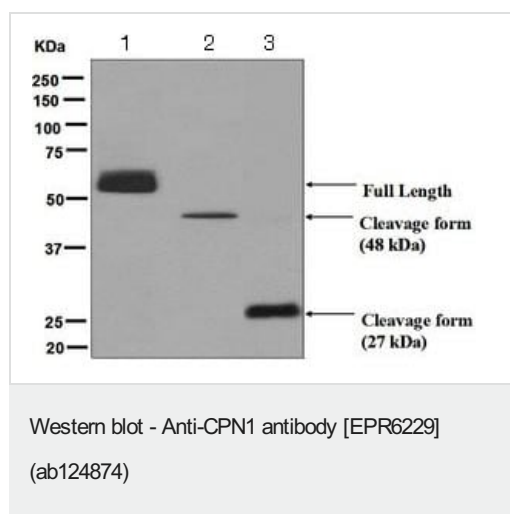
Tissue specificity Synthesized in the liver and secreted in plasma.

Involvement in disease Defects in CPN1 are the cause of carboxypeptidase N deficiency (CPND) [MIM:212070]. Patients affected present some combination of angioedema or chronic urticaria, as well as hay fever or asthma, and have also slightly depressed serum carboxy peptidase N, suggestive of autosomal recessive inheritance of this disorder.

Sequence similarities Belongs to the peptidase M14 family.

Cellular localization Secreted > extracellular space.

Images



All lanes : Anti-CPN1 antibody [EPR6229] (ab124874) at 1/1000 dilution

Lane 1 : Human plasma lysate

Lane 2 : HepG2 lysate

Lane 3 : Human fetal liver lysate

Lysates/proteins at 10 µg per lane.





Secondary

All lanes : HRP labelled goat anti-rabbit at 1/2000 dilution

Predicted band size: 52 kDa

Additional bands at: 27 kDa (possible cleavage fragment), 48 kDa (possible cleavage fragment)

Why choose a recombinant antibody?

 <p>Research with confidence Consistent and reproducible results</p>	 <p>Long-term and scalable supply Recombinant technology</p>
 <p>Success from the first experiment Confirmed specificity</p>	 <p>Ethical standards compliant Animal-free production</p>

Anti-CPN1 antibody [EPR6229] (ab124874)

Please note: All products are "FOR RESEARCH USE ONLY. NOT FOR USE IN DIAGNOSTIC PROCEDURES"

Our Abpromise to you: Quality guaranteed and expert technical support

- Replacement or refund for products not performing as stated on the datasheet
- Valid for 12 months from date of delivery
- Response to your inquiry within 24 hours
- We provide support in Chinese, English, French, German, Japanese and Spanish
- Extensive multi-media technical resources to help you
- We investigate all quality concerns to ensure our products perform to the highest standards

If the product does not perform as described on this datasheet, we will offer a refund or replacement. For full details of the Abpromise, please visit <https://www.abcam.com/abpromise> or contact our technical team.

Terms and conditions

- Guarantee only valid for products bought direct from Abcam or one of our authorized distributors